

Lot 19.  
Homestead Map. 3.  
Kaapahu.

Copy furnished Land Office  
Oct. 17-1901 Geo. F. Knight.

Grant 4550  
San Francisco

✓

File in Carton 77

Description of Lot 19. Homestead Map 3.  
 Kaapahu, etc., Hamakua, Hawaii.

Beginning at the east angle, at 30 ft. road, joining R.P. 7281, this point being S. 2082 ft. E. 2978 ft. approx. from Kalamia Station, thence running by true bearings:

1. - N. 74° 50' W. 1371 ft. along R.P. 7281 to middle of Gulch
2. - S. 29° 55' E. 124 " " bottom of Gulch.
3. - S. 18° 20' W. 212 " " — " —
4. - S. 21° 20' W. 515 " " — " —
- \* 5. - S. 85° 45' E. 988 " " Lot 20 to 30 ft road
6. - N. 46° 50' E. 730 " " 30 ft road to point of beginning

and containing an area of 17 1/2 acres.

Notes of Survey by O. Johnson  
 Survey by J. F. Brown

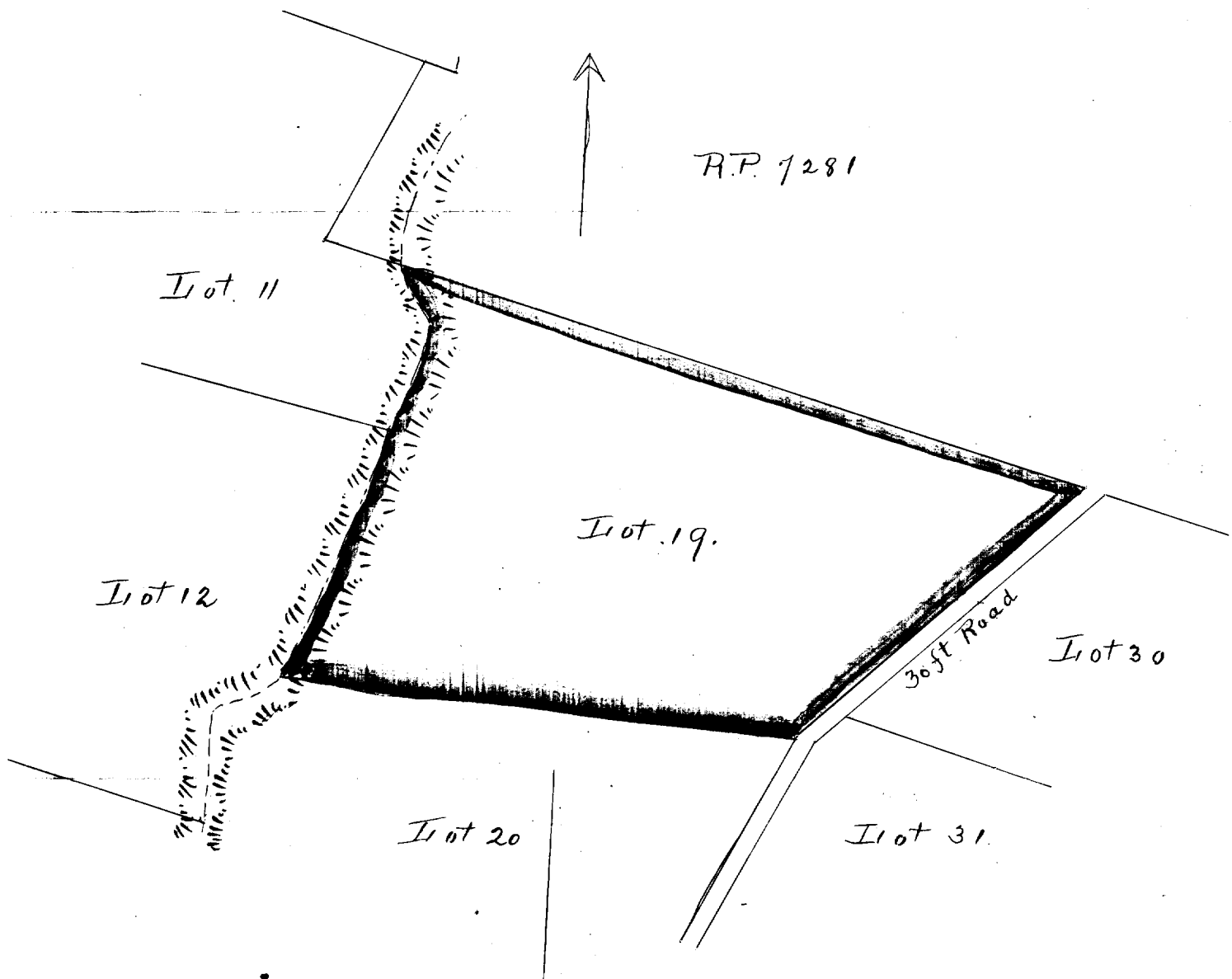
Nov. 6th 1895

Error 3.5 S } minor  
 2.1 E } Oct. 1900

\* The distance of the 5th Course  
 changed to 986.3 ft. as cal.

by G. Admore Jan. 1912.

N. 858.1	E. 1577.8
S. 861.5	W. 1577.4
3.4	.4



R.P. 1281

Lot 11

Lot 19.

Lot 12

30ft Road

Lot 30

Lot 20

Lot 31

Scale - 300ft = 1 inch.