

Lot. 19.  
Kinole & Waitau Kou.  
Homestead. Map. 17.

Grant No.

TO

Date.

Copy furnished Land O.  
Nov. 27, 1920

file in Carton 1.

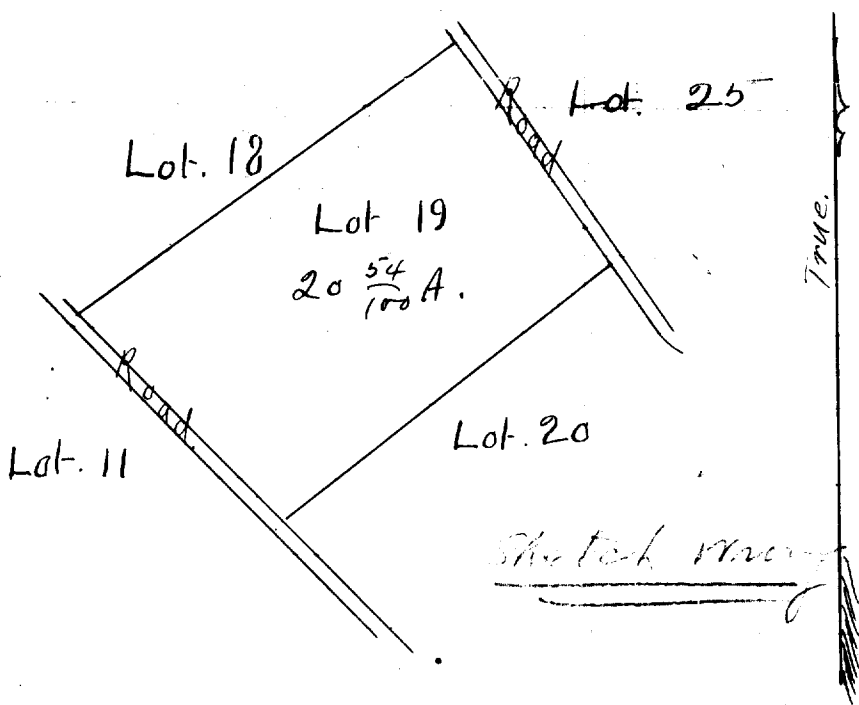
# Description of Lot. 19.

Nihoa & Wailau, Kau Homestead Maps, 17.

Beginning at a point on road marked + on rock which is 9910 feet North and 14071 feet West as shown on Homestead Map No. 17, on file in the office of the Land Survey, from rock survey station "A" and running as follows by true bearings:-

1. S. ~~48° 30'~~<sup>38'</sup> E ~~500~~ 398 feet along road.
- \* 2. S. ~~44° 30'~~<sup>42° 30'</sup> E = 590 " " "
- \* 3. S. ~~66° 00'~~<sup>69° 00'</sup> W = ~~480~~<sup>1190</sup> " " Lot 20.
4. N 44° 00' W = 650 " " Road
- \* 5. N 52° 40' E = 1085 " " Lot 18 to initial point and containing an area of  $20 \frac{54}{100}$  Acres.

Aug 18<sup>th</sup> 1892  
W. A. W. A. W.



Scale. 500 ft = 1. inch.

\* Corrected to agree with Homestead map.

N	S	E	W
11251.6	11244	1160.0	1161.5

Newton - July 1913

of S. W. A. W.

Area  
20.64 ac.

W. A. W.