

Description of
Homestead Map 16,
Waipumali Lots Kilo Nau

Copy furnished Land Office Oct 25-1901
Dec 23-1901

Grant No. 4570

TO *Antone Jardin*
Date.

File in Carton 131.

Description of Lot 18.

Manueliad Map 16.

Waipunaeei Lots. Hills. Hawaii

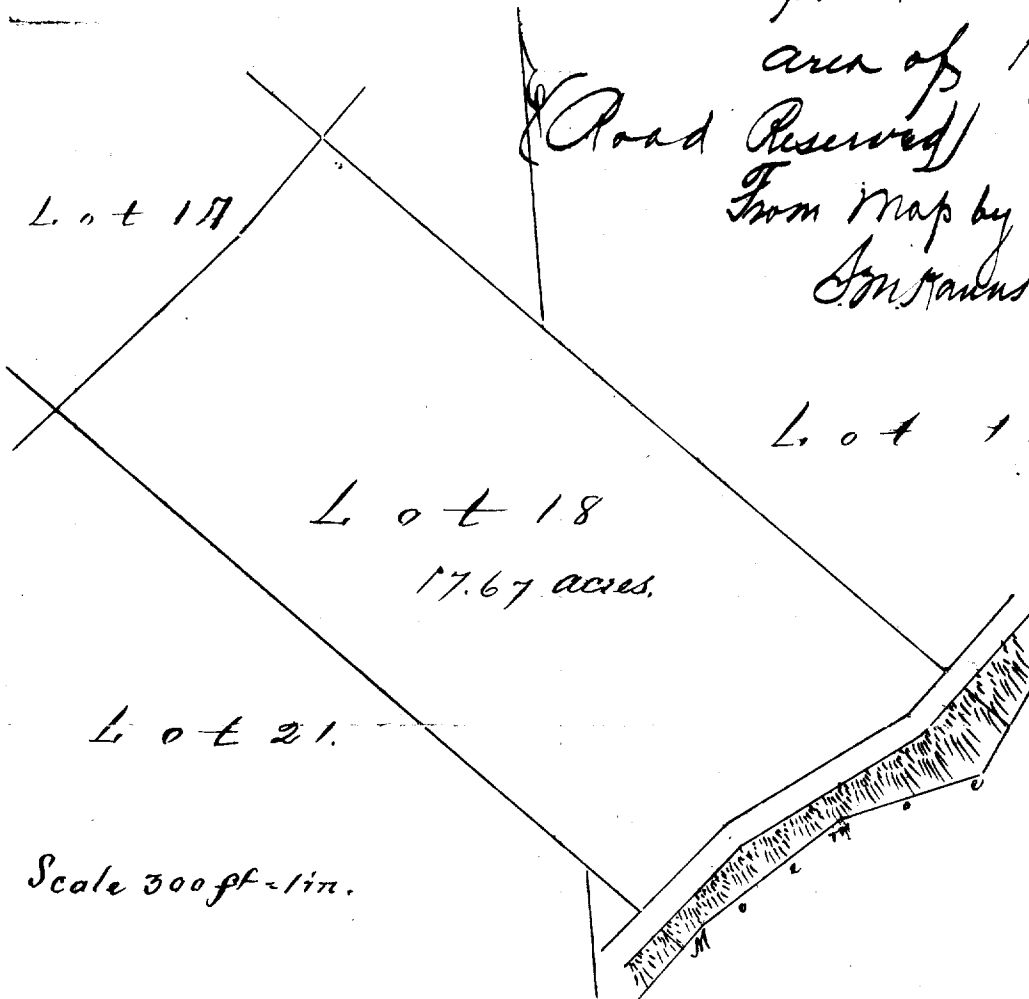
Beginning at N L of this Lot, being S. E. & N L of Lots 14, 17, & 15 respectively, 796 ft S, 942 ft N of concrete reference blocks, at S L of Lot 4, and running as follows;

- 1 S 45° 30' E true, 1420 ft. along Lot 15.
- 2 S 65° 10' N true 304 ft. middle of Moemoemo gulch being the boundary.
- 3. S 55° 00' N true, 317 ft. Middle of Moemoemo gulch being the boundary.
- 4 N 45° 30' N true 1298 ft. along Lot 21.
- 5. N 48° 45' E true 597 ft. along Lot 17 to initial point and containing an area of 17.67 acres.

(Road Reserved)

From Map by A. B. Liebenstein
Honolulu, Hawaii.

June 15-1891



Lot 15.

Lot 18
17.67 acres.

Lot 21.

Error 1.38 0.46
GFW out of

Scale 300 ft = 1 in.