

Lot. 18. 6  
Homestead Map. 3.  
Kaapahu.

Copy furnished  
Int. Dept. Sept. 16<sup>th</sup> 196  
2<sup>nd</sup> Copy Nov 20<sup>th</sup> 196

Grant No. 3995  
TO D. Kanehiana  
Date.

✓  
File in Cartm 77

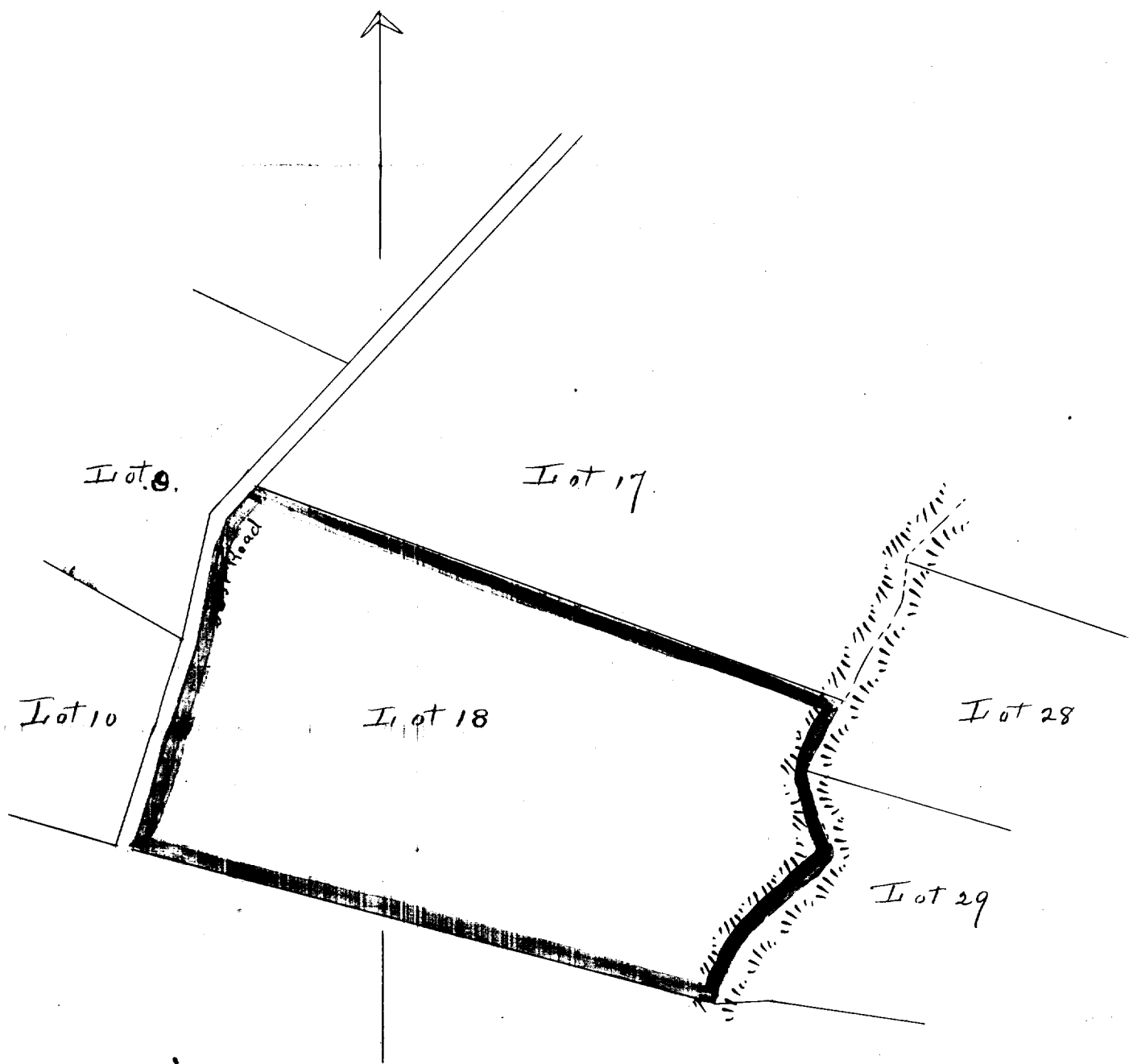
Description of Lot 18, Homestead Map 3.  
Kaapahu, etc., Hamakua, Hawaii.

Beginning at the west corner of Lot 17., at 30 ft road,  
this point being S. 6340 ft. N. 2236 ft. approx. from  
Kalaniai Station, thence running by true bearings:

- |                  |        |                   |  |
|------------------|--------|-------------------|--|
| 1.-S. 43° 0' N.  | 92 ft. | along 30 ft road. |  |
| 2.-S. 13° 10' N. | 251 "  | "                 | " — " —  |
| 3.-S. 18° 10' N. | 418 "  | "                 | " — " —  |
| 4.-S. 74° 45' E. | 1170 " | "                 | Govt Land to middle of Gulch   |
| 5.-N. 40° 20' E. | 370 "  | "                 | bottom of Gulch  |
| 6.-N. 17° 45' N. | 184 "  | "                 | " — " —  |
| 7.-N. 30° 55' E. | 155 "  | "                 | " — " —  |
| 8.-N. 69° 40' N. | 1217 " | "                 | Lot 17. to point of beginning<br>and containing an area of 19 <sup>3</sup> / <sub>4</sub> Acres. |

Nov. 6th 1895

Notes of Survey by O. Soumson.  
Survey by J. A. Brown.



Scale - 300 ft = 1 inch.