

Lot. 17.
Homestead Map. 3.
Kaapahu.

Copy Furnished for Grant

Nov 20th

Grant No. 3996

Manoel A. Gomes

✓

File in Carton 77

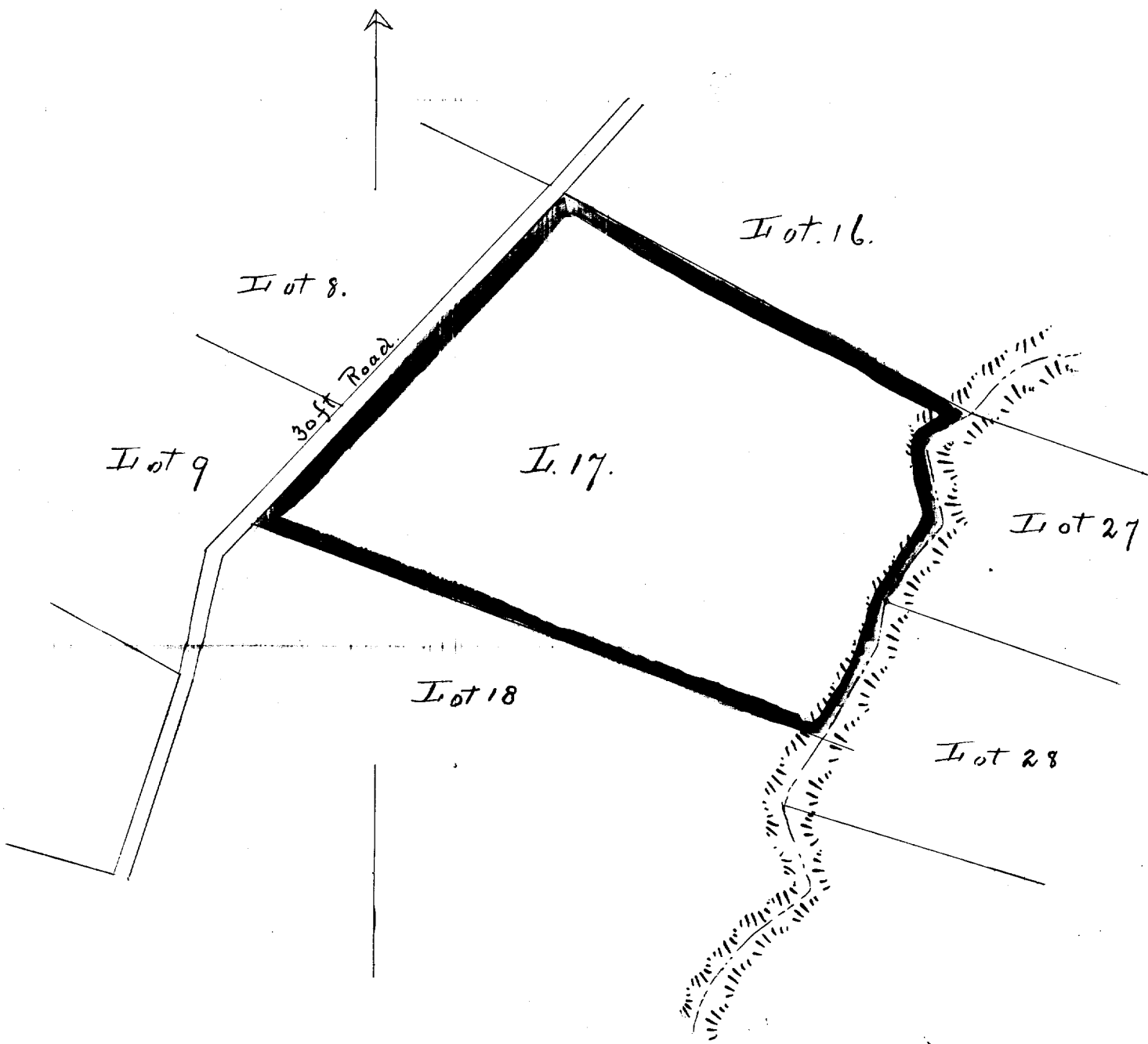
Description of Lot 17. Homestead Map. 3.
 Kaapahu, etc., Hamakua, Hawaii.

Beginning at the west corner of Lot 16, at 30 ft road, this point being S. 5680 ft. W. 1613 ft. approx. from Kalamia Station, thence running by true bearings:

1. - S. 43° 0' W. 908 ft. along 30 ft road.
2. - S. 69° 40' E. 1217 " " Lot 18 to middle of Gulch
3. - N. 23° 20' E. 293 " " bottom of Gulch
4. - N. 40° 10' E. 182 " " — " —
5. - N. 9° 30' W. 188 " " — " —
6. - N. 57° 5' E. 100 " " — " —
7. - N. 61° 40' W. 920 " " Lot 16 to point of beginning
 and containing an area of 19 1/4 acres.

Notes of survey by O. Lomason.
 Survey by J. F. Brown.

Nov. 6th 1895



Scale - 300ft = 1inch