

*Description of Lot 17*

*Homestead Map 16*

*Waipumali Lots. Hilo Ha.*

Grant No.

TO

Date.

*Copy furnished Land Office  
Oct. 17-1905.*

*Grant 4910 to  
Thos. McKinley*

File in Carton 131.

Description of Lot 17.

Homestead Map 16.

Waipunaiki Lolo, Kilo, Hawaii

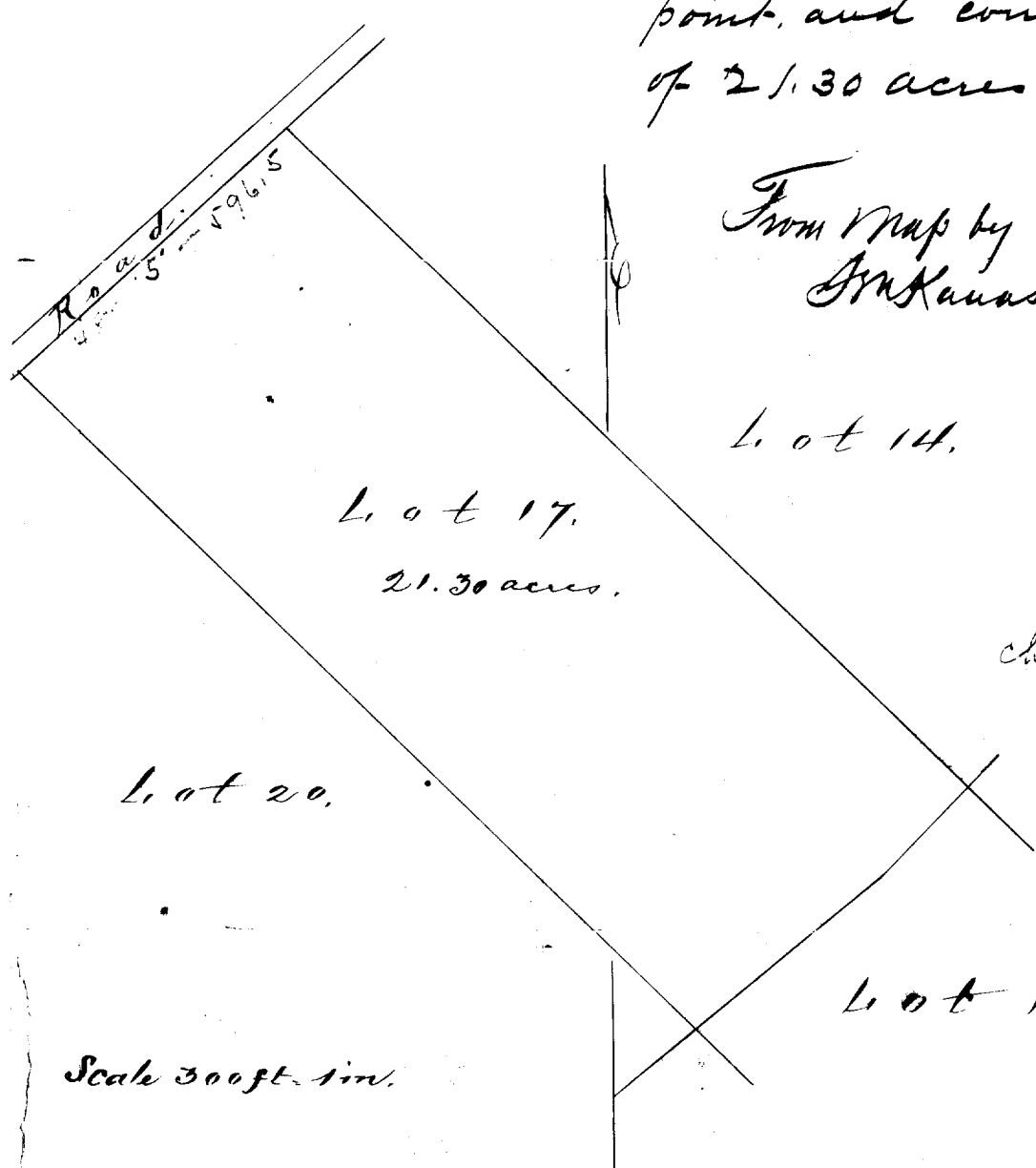
Beginning at East corner of this lot being N. S.  $\frac{1}{4}$  <sup>corner</sup> of lots 8, 14, & 15, respectively, 796 ft S. & 942 ft west of "3. corner reference mark" at <sup>the</sup> South  $\frac{1}{4}$  <sup>corner</sup> of Lot 4, and running as follows:

1. S 48° 45' W true 597 ft along Lot 18;

2. N 45° 30' W true 1552 ft along Lot 20.

3. N 48° 15' E true ~~500~~<sup>596.5\*</sup> ft along road;

4. S 45° 30' E true 1557 ft along Lot 14, to <sup>the</sup> initial point, and containing an area of 21.30 acres.



From Map by A. B. Sachsestein.  
J. M. Kauakami

June 15 1891

Lot 14.

Lot 17.

21.30 acres.

S + 1.6  
E + 2.2

Area 21.30

Checked by Newton  
Oct. 16-1905

Lot 20.

Corrected by order of H. B. Wall  
Oct. 17-05. ROR.

Lot 18

Scale 300 ft. = 1 in.

Lot 17  
Kaipunalei Homesteads  
North Hills, Hawaii

Grantee according  
to deed description

"Readjusted"

WAIPUNALEI HOMESTEAD LOTS.

North Hilo, Hawaii.

Lot No. 17.

Description and Plan:-

Beginning at the West corner of this Lot, at a post at the corner of fence and row of trees, on the South edge of Road reserve, the coordinates of which point are 201.2 feet South and 2606.3 feet West of Waipunalei Trig. Station as shown on Hawaii Territory Survey Reg. Map No. ~~2193~~, and running by true bearings :-

1. N 48° 22' E 613.3 feet along 40 foot Road reserve ;
2. S 44° 55' E 1562.7 " " Lot No. 14 to East corner ;
3. S 48° 45' W 610.0 " " " " 18 " South " ;
4. N 45° 02' W 1558.5 " " " " 20 to the point of beginning.

21.92 Acres

Less area of two 40 foot Road reserves 1.60 "

Containing 20.32 Acres.

*J. H. Moragne*

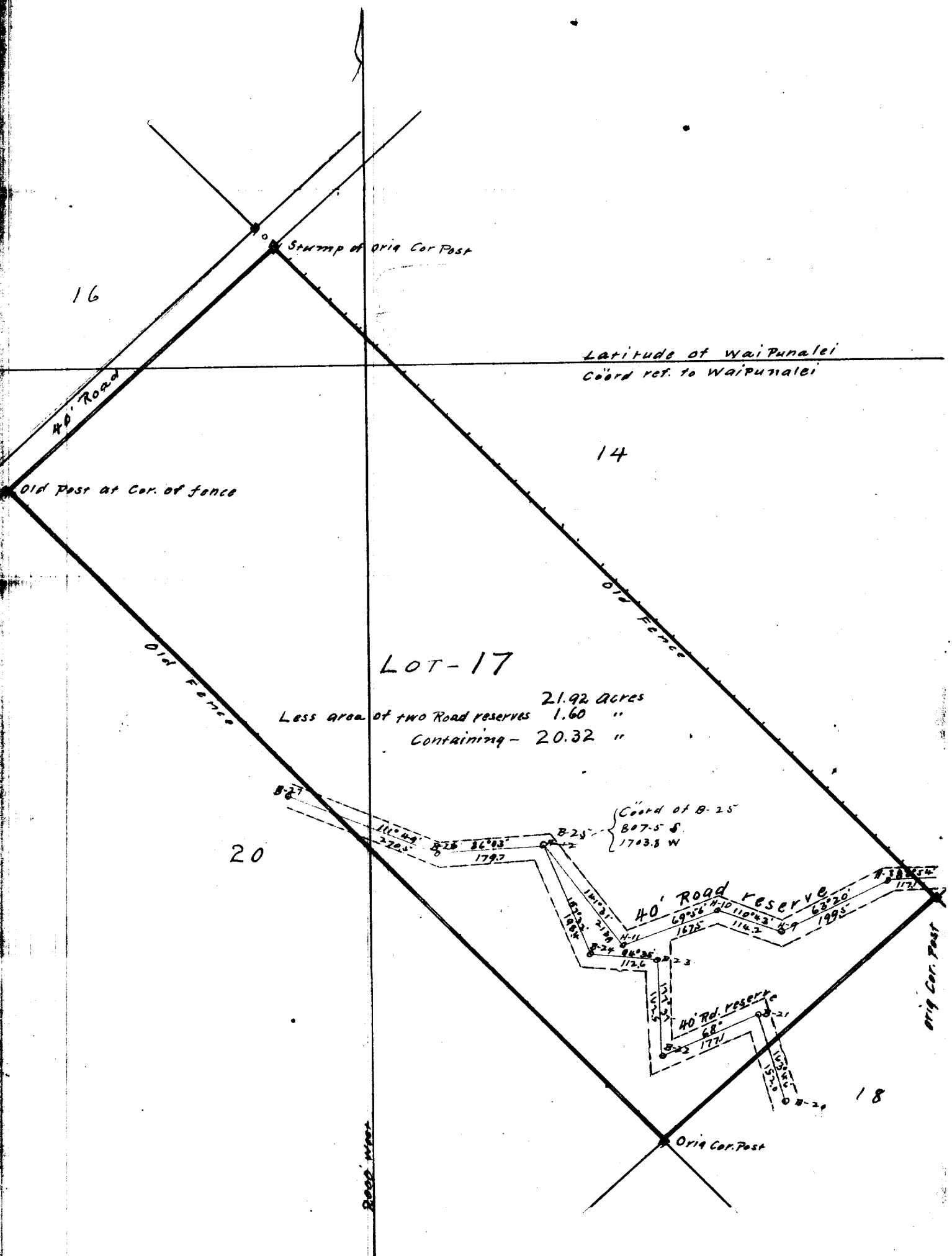
Hilo, Hawaii.

Surveyor.

July 20th. 1903.

The above Description checks as follows:-  
Coord. S. Pt. Rel. to Waipunalei Trig. Sta. = 201.2 S 2606.3 W  
" " from Bearings & Dist. = 201.3 S 2606.0 W  
Error in Closing = 0.0 0.3

E. W. Baldwin  
Assist. in Charge of Work.



16

Stamp of Orig Cor Post

Latitude of Wai Punalei  
Coord ref. to Waipunalei

14

Old Post at Cor. of fence

LOT-17

21.92 Acres  
Less area of two Road reserves 1.60 "  
Containing - 20.32 "

Old Fence

Old Fence

20

Coord of B-25  
807.5 S  
1703.8 W

40' Road Reserve  
69°56' N-1011°43' W-9  
1675 114.2 1995

40' Rd. Reserve  
68°  
1771 155.0 B-21

Orig Cor. Post

Orig Cor. Post

18

Scale 200' = 1 inch