

Description of Lot 16
Hamstead Map 16
Waipunahii Hills, Hawaii

Grant No.

TO

Date.

Copy furnished Land Office
Dec. 4th 1905,

Grant 4922 to
Hermann Meyer

File in Carton 131.

Description of Lot 16.
Homestead Map 16.
Waipunalii Lots, Ala, Hawaii

Beginning at East corner of this Lot, being South corner of Lot 13, 318 ft North, 2077 ft West of ~~concrete reference block~~ at South corner of Lot 4, and running as follows:

- 1 S 48° 15' W true 600 ft. along road (40 ft wide).
- 2 N 45° 30' W true 1500 ft. along Lot 19.
- 3 N 54° 00' E true 605 ft. along edge of Pali.
- 4 S 45° 30' E true 1440 ft. along Lot 13, to initial point and containing an area of 20.00 acres.



From Map by A. S. Lockenstein,
 S. W. Kauaie

June 15 1891

Lot 13

Lot 16.

20.00 acres.

Lot 19.

Lot 17.

Scale 500 ft = 1 in

[Faint handwritten notes, possibly: 34 1897 Charles Smith's map, No. 113, lot 20, 1897, area 20.00 acres.]

Lot 16:
Waipunaiei Homestead
North Hilo, Hawaii

Recorded according
to old records

"Readjusted"

WAIPUNALEI HOMESTEAD LOTS.

North Hilo, Hawaii.

Lot No. 16.

Description and Plan:-

Beginning at the East corner of this Lot at a post at corner of fence and row of trees on the North edge of 40 foot Road reserve; the coordinates of which point are 234.4 feet North and 2176.1 feet West of Waipunalei Trig. Station as shown on Hawaii Territory Survey Reg. Map No. *2193*, and running by true bearings :-

- 1. S 48° 20' W 610.8 feet along 40 foot Road reserve to the South corner ;
- 2. N 45° 26' W 1504.7 feet along Lot No. 19 ;
- 3. N 53° 28' E 598.1 " " Gov't. land along the edge of Gulch ;
- 4. S 46° 10' E 1452.4 " " Lot No. 13 to the point of beginning.

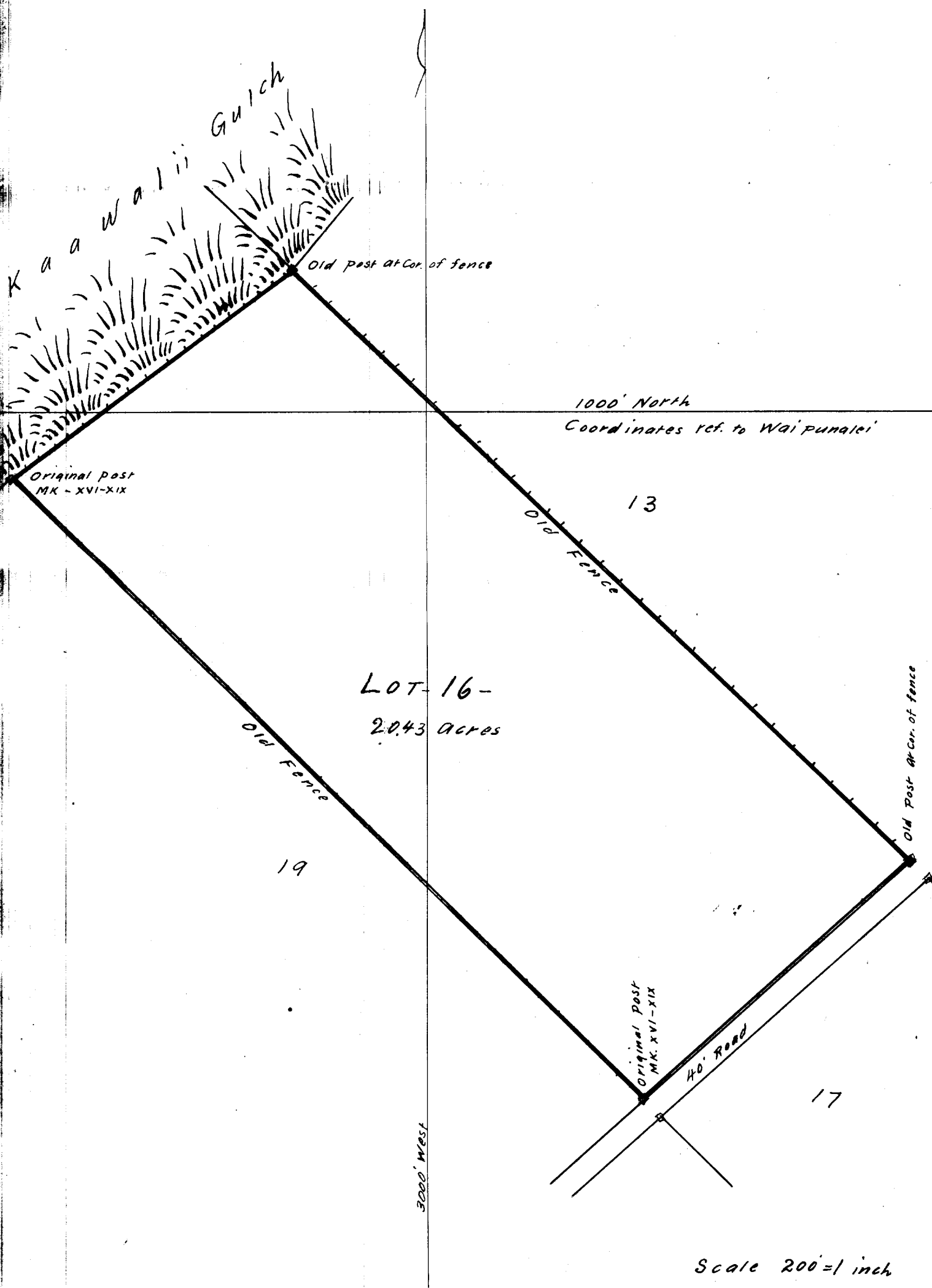
Containing 20.43 Acres.

J. H. Moragne
Surveyor.

Hilo, Hawaii.

July 20th. 1903.

The above Description checks as follows:-
 Coord. S. of Trig. Sta. = 234.4 N 2176.1 W
 " " from Res. - 2176.1 = 234.5 N 2176.1 W
 Error in closing = 0.1 0.0
 E. W. Baldwin
 Assist. in Charge of Work.



K a a w a l i i Gulch

Old post at Cor. of fence

1000' North
Coordinates ref. to Wai Punalei

Original post
MK. XVI-XIX

13

Old Fence

LOT 16-
2.043 acres

Old Fence

19

Old Post at Cor. of fence

Original post
MK. XVI-XIX

40' Road

17

3000' WEST

Scale 200' = 1 inch