

Map 4 Lot 15
Homestead Lot 15

Map 4.

Hamakua, Hawaii

Grant No. 3722

TO Joao Fernandez

Date.

Copy furnished

Land office

Aug 21st 1894

Description of Government Homestead lot 15.

Map 4. Homakua, Hawaii

Beginning at Kukui tree on makai side of road in middle of gulch separating the lands of Papalele and Waikalulu, thence the boundary runs by true bearings:

North 48 feet following middle of gulch

N 14° 35' E 396

N 67° 57' W 675 .. along S.C.A. 10570 (Onlu) to S.W. angle of same.

N 66° 50' W 190 ft along Grant 3429 Part 2nd to middle of Kalopa gulch.

S 18° 30' W 158 middle of Kalopa gulch

S 73° 51' W 118 " " "

S 60° 38' W 43 " " "

S 32° 24' W 95 " " " to pt on makai side of road.

N 63° 30' E 127 makai side of road

S 77° 56' E 63 " " "

S 83° 10' E 129 " " "

S 59° 5' E 156 " " "

S 55° 57' E 180 " " "

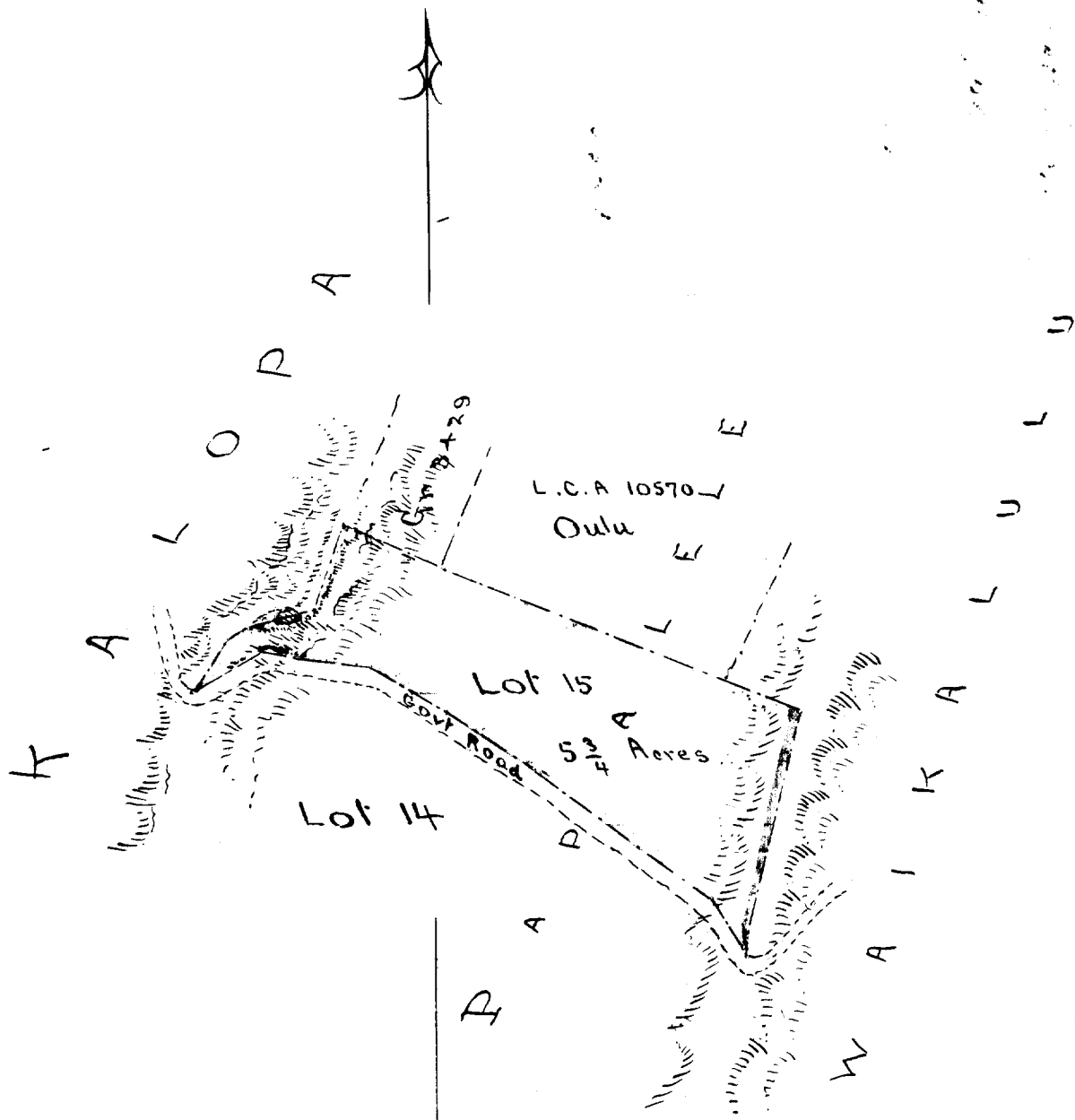
S 53° 15' E 384 " " "

S 31° 15' E 114 " " " to

Initial point

Area 5 ³/₄ Acres

G. F. Baum Aug 20th 1894



Sc. 300 ft to inch.