

Description of Lot 14

Homestead Map 16

Waipuuahii Lolo Hills  
Hawaii

Furnished.

Grant No. 3826

TO J. Hamilton

Date.

File in Carton 131.

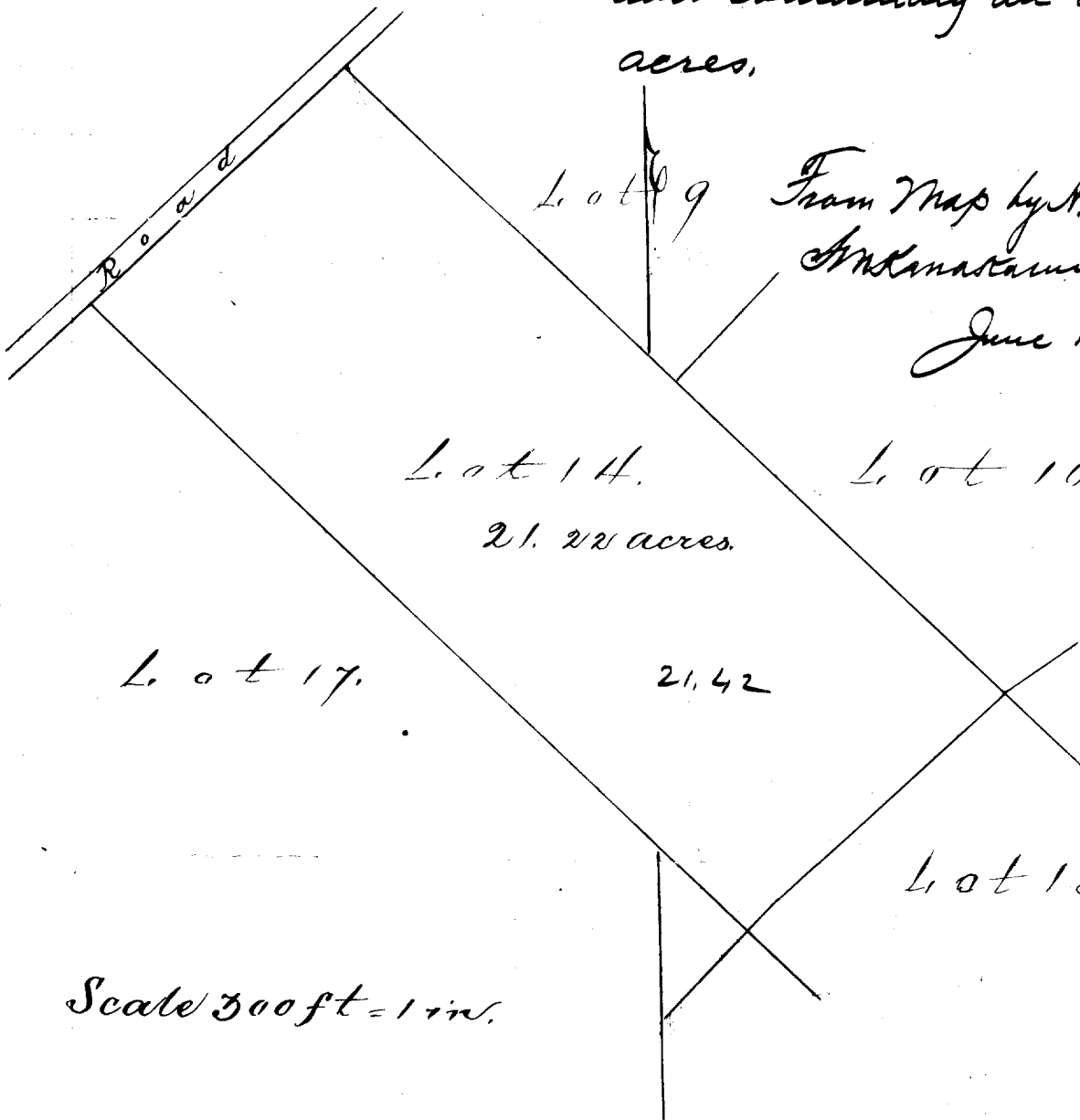
Copy furnished Nov. 22, 1895  
to L Office

Description of Lot 14  
Houmestead Map 16.

Waipanaeai Lots, Hilo, Hawaii

Beginning at South <sup>corner</sup> of this lot, being <sup>the</sup> N, E & W corner of <sup>lots</sup> 8, 17, & 15 respectively, 796 ft S. & 942 ft. west of ~~reference~~ concrete block at South corner of Lot 4, and running as follows; by true bearings:

- 1 S 48° 25' E true 600 ft. along Lot 15;
- 2 N 45° 30' W true 1560 ft. along Lot 9 & 10;
- 3 S 48° 05' W true 600 ft. along road;
- 4 S 45° 30' E true 1557 ft. along 17, to initial point and containing an area of 21.22 acres.



From Map by A. B. Sachemstein  
A. Kanakamaui  
June 15 1891

Scale 300 ft = 1 in.