

Lot 14
Kahuku, Hills

Map 10.

Grant No. 4880

TO Manuel Sabrinha

Date.

Copy furnished Land Office
Feb. 21st. 1905.

File in Carton 108.

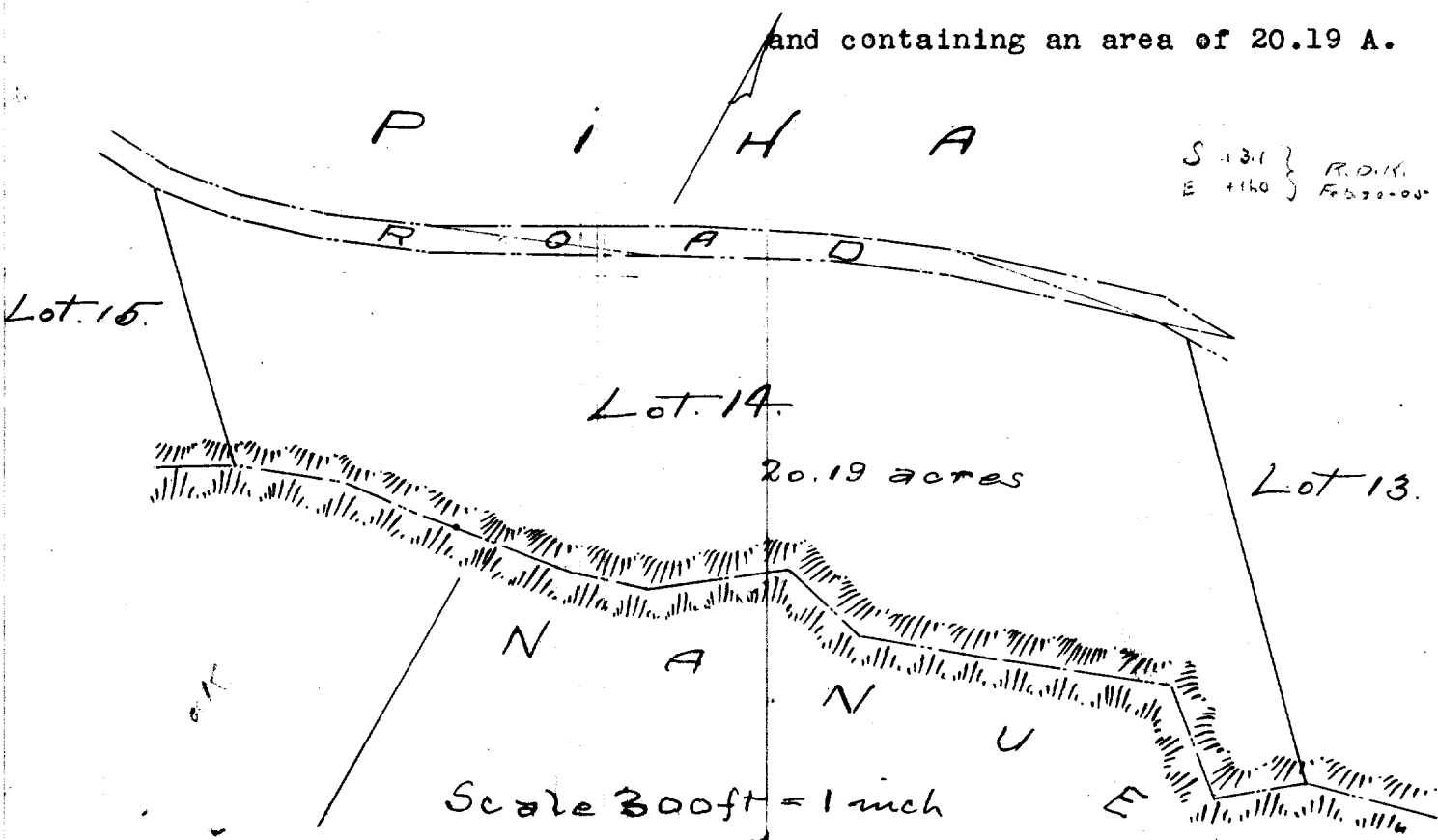
DESCRIPTION OF LOT 14: HOMESTEAD MAP 10.

KAHUKU, HILO, HAWAII.

Beginning at a point on South side of road, being West \angle of Lot 13, 5228 ft. West 3785 ft. South of Kahuku Trig Station and running as follows:-

- 1.- S. $69^{\circ} 5'$ W. true 1693 ft. across this lot, the line of road being the boundary.
- 2.- S. $44^{\circ} 30'$ E. " 463 ft. along Lot 15.
- 3.- N. $77^{\circ} 18'$ E. " 707 ft. along Nanue, the middle of Waiehu Gulch being the boundary.
- 4.- N. $51^{\circ} 40'$ E. " 235 ft. along middle of Waiehu Gulch.
- 5.- S. $75^{\circ} 5'$ E. " 155 ft. along the same.
- 6.- N. $69^{\circ} 35'$ E. " 510 ft. "
- 7.- S. $51^{\circ} 38'$ E. " 200 ft. "
- 8.- N. $51^{\circ} 0'$ E. " 147 ft. "
- 9.- N. $44^{\circ} 30'$ W. " 735 ft. " to initial point

and containing an area of 20.19 A.



Description of Lot 14:

Homestead Map 10.

Kahuku Hills Hawaii.

Beginning at a point on south side of road, being West L of Lot 13, 5228 ft West 3785 ft South of Kahuku Tug Station, and running as follows:

- 1 S 69 5 N true 1693 ft across this lot, the line of road being the boundary;
- 2 S 44 30 E true 463 ft along Lot 15;
- 3 N 77 18 E true 707 ft, along Naue, the middle of Waiehu gulch being the boundary;
- 4 N 51 40 E true 235 ft, along middle of Waiehu gulch;
- 5 S 75 5 E true 155 ft along the same;
- 6 N 69 35 E true 510 ft, along the same;
- 7 S 51 38 E true 200 ft, along the same;
- 8 N 51 0 E true 149 ft, along the same;
- 9 N 44 30 N true 735 ft along the same, to initial point, and containing an area of 20.19 acres.