

Description of Lot 13.

Homestead Map 16

Waipuuani Lots, Hilo
Hawaii

Grant No. 4744

TO A. Enos

Date.

Copy furnished Land Office
June 6 - 1902

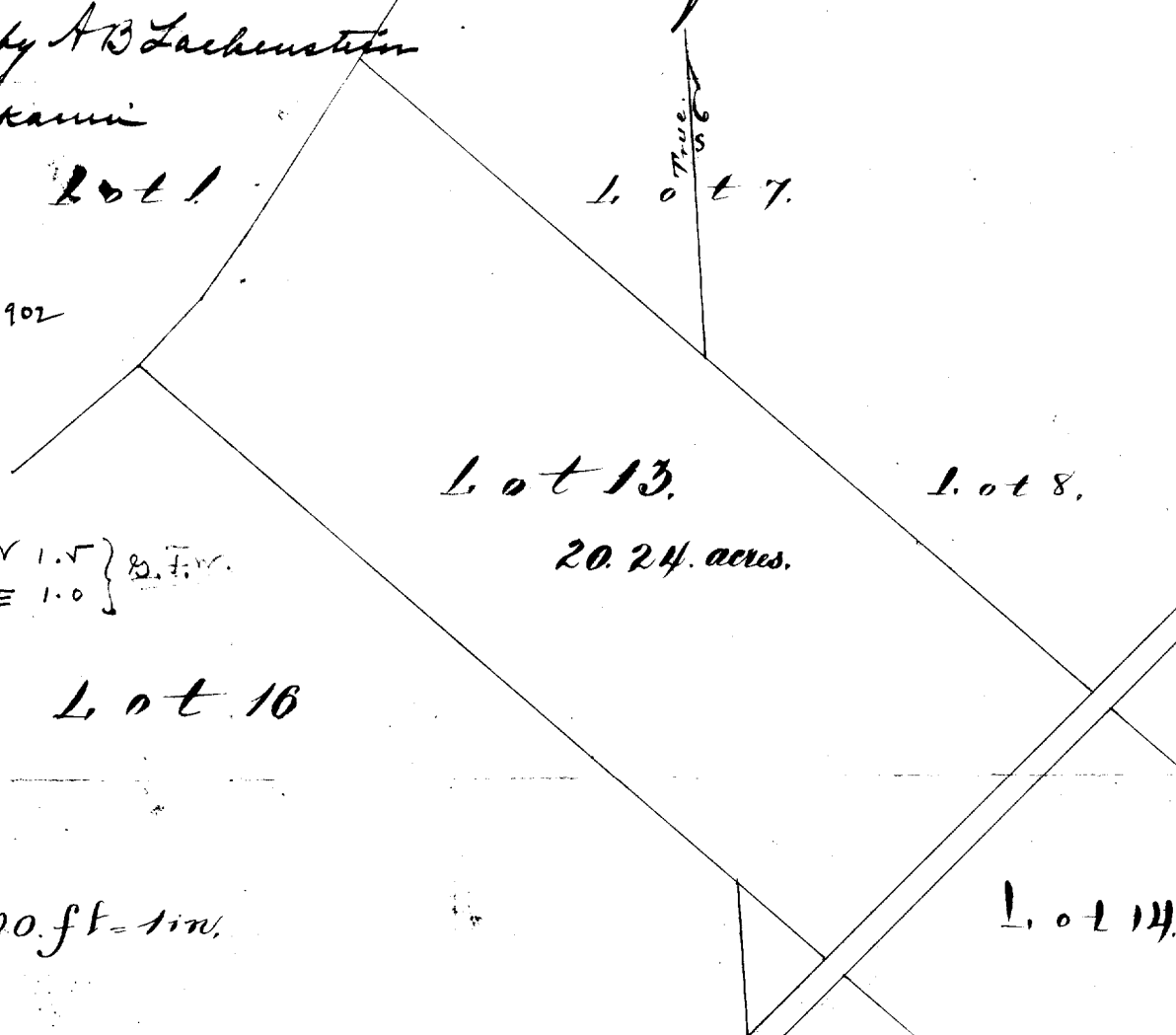
File in Carton 131.

Description of Lot 13,
Homestead Map 16,
Waipunaiahi Lands, Hills, Hawaii

Beginning at South corner of this Lot, at a point on road, 318 ft ~~South~~ ^{North} 2047 ft. west of ~~Concrete~~ reference post at South Corner of Lot 4, and running as follows:

1. N $45^{\circ} 30'$ W. true 1440 ft along Lot 16;
- 2* N $49^{\circ} 10'$ E. true 603 ft, the edge of pali being the boundary.
3. S $45^{\circ} 30'$ E. true 1535 ft. along Lots 7 & 8.
4. S $48^{\circ} 15'$ W. true 600 ft. along road, to initial point, and containing an area of 20.24 acres.

From Map by A. B. Lachenstein
 Honolulu
 June 15 1891 Lot 1
 * Sec. J. Wright
 June 6-1902



Error N 1.5 } S.F.V.
 E 1.0 }

Scale 300 ft = 1 in.