

Box No. 13.
Somerset May 11/12
Kaunahua Hamakua

Copy furnished

Oct 29 75

Grant No. 3851

TO S. Kealoha
Date.

File in Contm 75

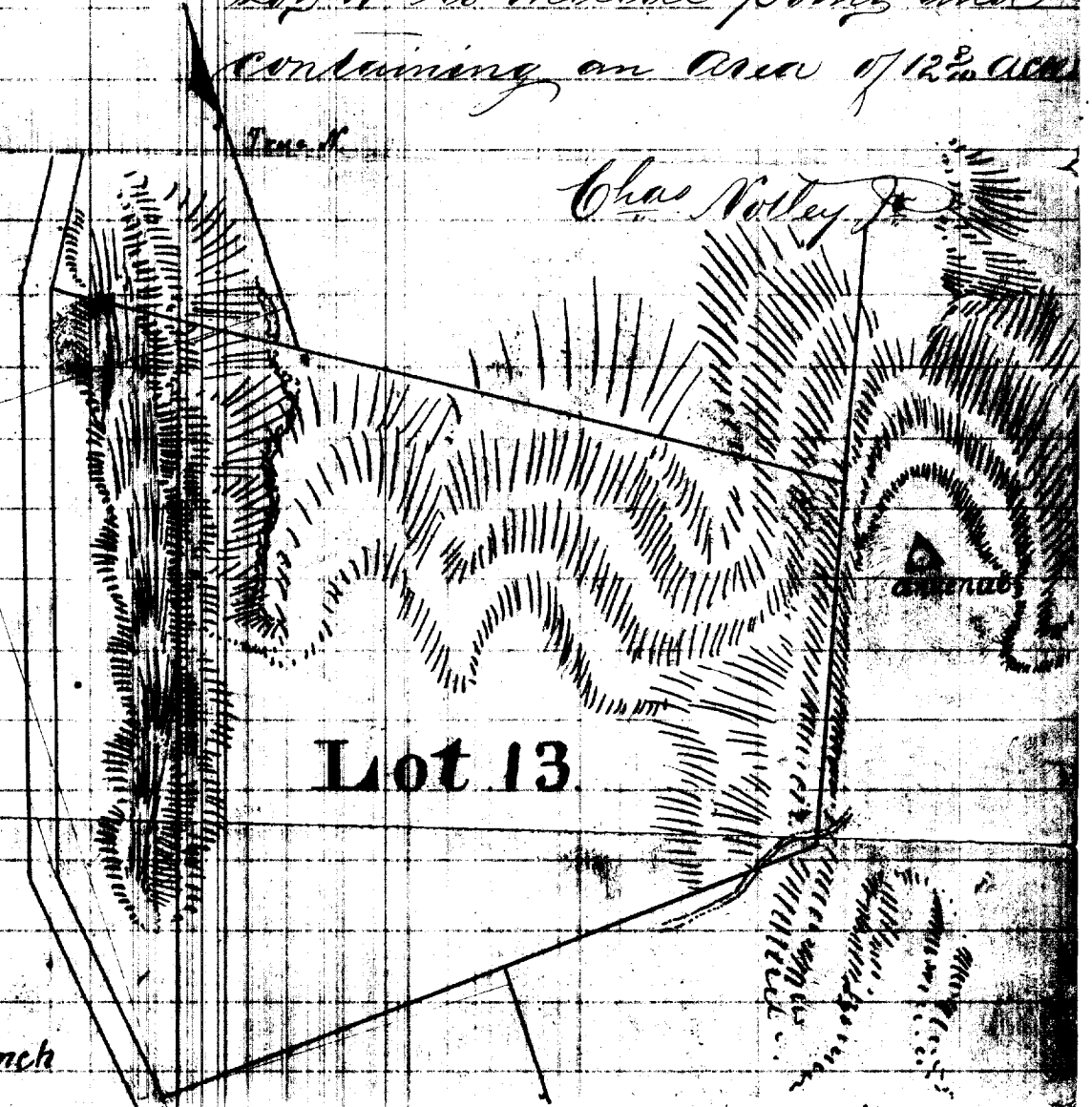
Description of Lot No. 13.

Homestead Map No. 12.

Kaunakulua Homestead Hawaii

Beginning at the N.E. corner of this lot being also the S.E. corner of Lot No. 11 and running as follows

- 1. S. 22° 28' W true 400 feet along the Steadfast boundary to a sunken rock marked +
- 2. S. 86° 41' W true 970 feet to a sunken stone marked *
- 3. N. 6° 20' W true 270 feet along the reserved road
- 4. N. 17° 40' E true 638 feet along the reserved road
- 5. S. 68° 00' E true 895 feet along the boundary of Lot 11 to initial point and containing an area of 12²/₁₀ acres



Scale 200 ft. = 1 inch