

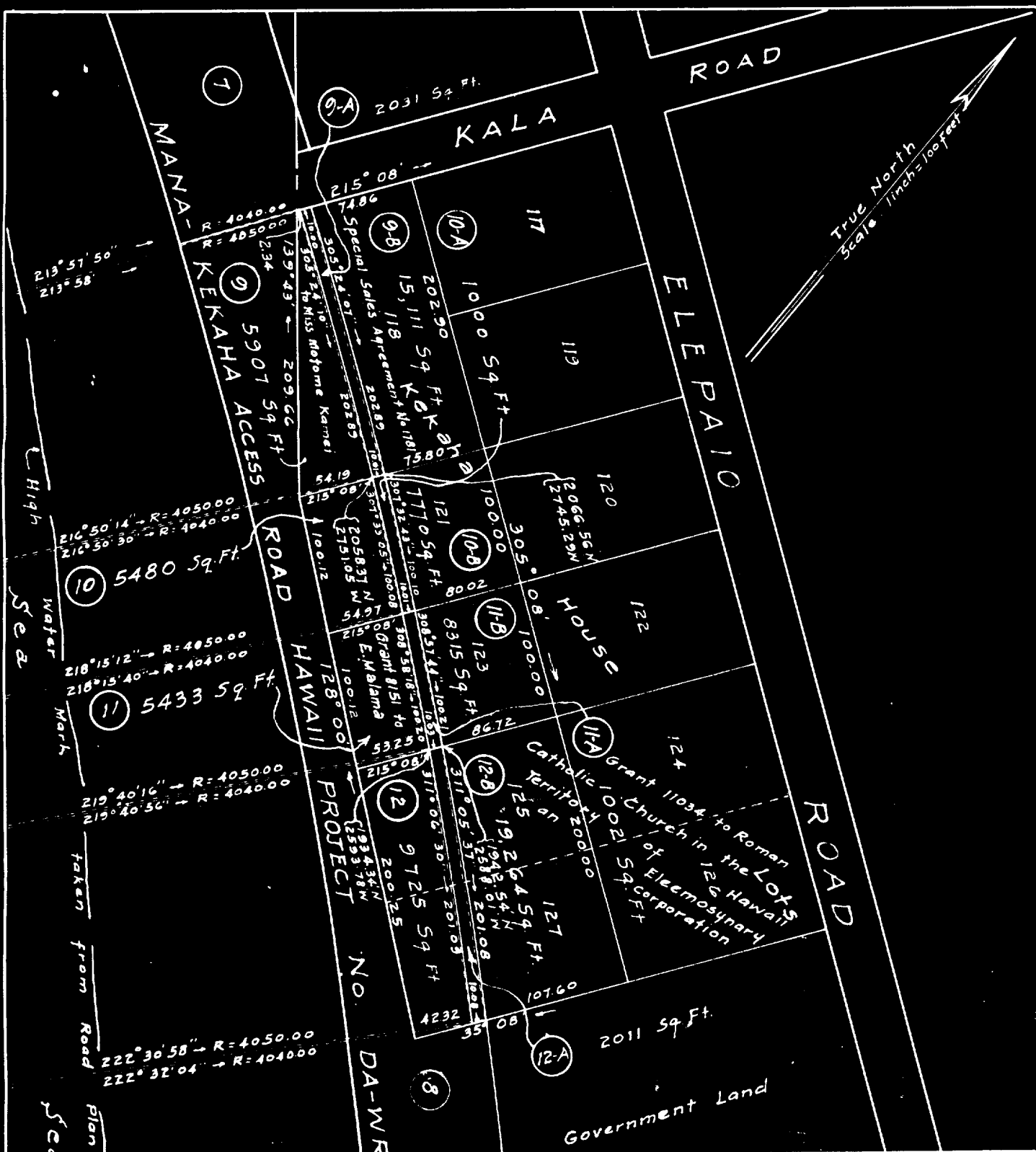
PARCELS 9 and 9-A
Mana-Kekaha Access Road.
Kekaha, Waimea, Kona, Kauai, T.H.

*Portion of Lot 118
Kekaha House Lots*

Furnished Land Office
Mar. 13, 1947

Folder 172

Filed in Carton 24



Note:

Coordinates as shown are referred to Oamano' Triangulation Station

Note:

Compiled from Government Survey Map of the Kekaha House Lots and from center line data of Department of Public Works Road Plan, Mana-Kekaha Access Road, Hawaii Project No DA-WR 1

Calculation by E.N.
Tracing by E.N.

Calculation Folders 83-A & 83-C
Agreement Folder 74
Description " 86

TERRITORY OF HAWAII
DEPARTMENT OF PUBLIC WORKS
DIVISION OF SURVEYS AND RIGHTS OF WAYS
RIGHT OF WAY MAP

MANA-KEKAHA ACCESS ROAD, HAWAII PROJECT NO. DA-WR 1

Map showing Parcels 9, 9-A, 9-B, 10, 10-A, 10-B, 11, 11-A, 11-B, 12, 12-A and 12-B situated near the Southeast side of Kala Road
KEKAHA, WAIMEA, KONA, KAUAI, T. H.

Dec. 1, 1945

Scale: 1 Inch=100 Feet

Approved by:

Approved by:

T.Y. Arana
Chief Cadastral Engineer

Karl A. Sinclair
Acting Supt. of Public Works

NOTE: This tracing is a copy made from a print of tracing dated Dec. 1, 1945. Traced 8/8/46 by B.K.H.C. P.H. Desc. Folder No. 86