

Description of Lot 10 ✓

Homestead map 16.

Waipunaiki Lots. Hills
Hawaii

L. E. Swain

Copy Furnished for Grant

April 28th 1898

Grant No. 4173

File in Carton 131.

For Grant to L. E. Austin
 Purchase Price \$ 86 ⁹⁰/₁₀₀

Description of Lot 10.

Homestead Map 16.

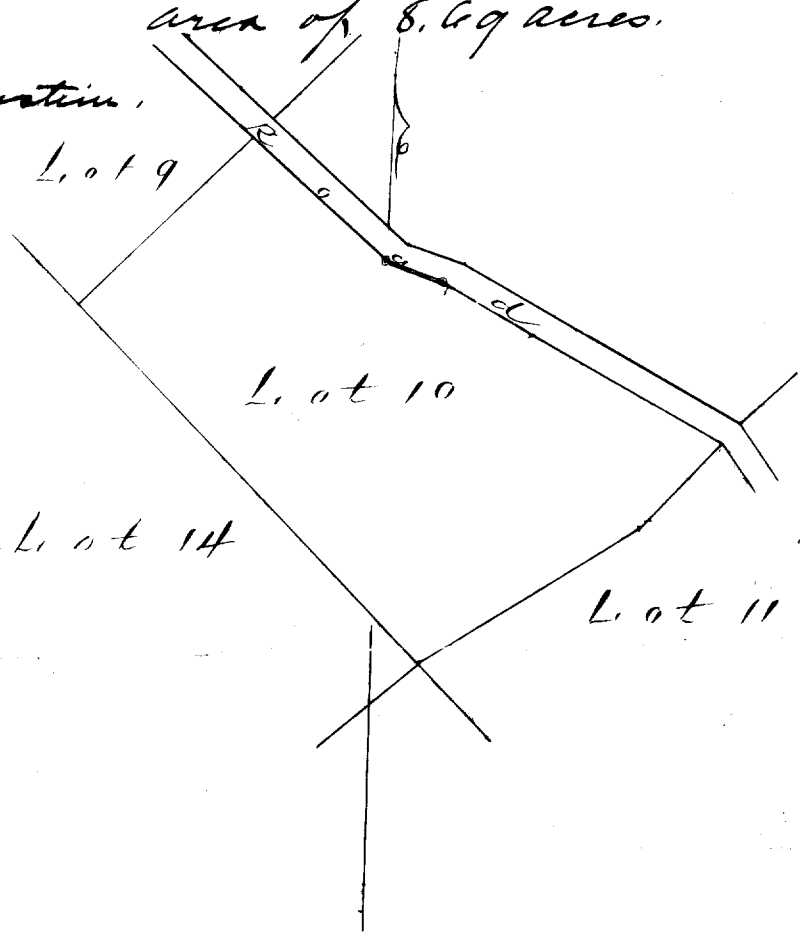
Waipunaalei Lots. Kilo Hawaii

Beginning at East corner of this lot, at a point on road being North corner of Lot 11, 35 ft South, 28 ft West of reference corner back at South corner of Lot 4, and running as follows:

- 1 N 62° 00' W true 505 ft along road.
- 2 N 71° 50' W true 95 ft along the same,
- 3 N 48° 20' W true 282 ft along the same;
- 4 S 44° 30' W true 375 ft along Lot 9.
- 5 S 45° 30' E true 480 ft along Lot 14
- 6 N 56° 30' E true 406 ft along Lot 11.
- 7 N 41° 50' E true 185 ft along the same to initial point, and containing an area of 8.69 acres.

From Map by A. C. Buchanan.

M. K. Kameh
 June 15 1891



Scale 300ft = 1 in.