

HANAPEPE TOWN LOTS, FIRST SERIES

LOT 101

PARTS A AND B

Hanapepe, Waimea, Kauai, Hawaii

Furnished Land Department  
June 24, 1992

Folder No. 193-B

KAUAI FILE  
CARTON 22-A



STATE OF HAWAII

SURVEY DIVISION

DEPT. OF ACCOUNTING AND GENERAL SERVICES

HONOLULU

C.S.F. No. KAUAI FILE  
CARTON 22-A

June 17, 1992

HANAPEPE TOWN LOTS, FIRST SERIES

LOT 101

PARTS A AND B

Hanapepe, Waimea, Kauai, Hawaii

Being portions of the Government (Crown) Land of Hanapepe.

PART A:

Beginning at a 3/4 inch pipe at the northwest corner of this parcel of land and on the south side of Roadway (15-feet wide), the coordinates of said point of beginning referred to Government Survey Triangulation Station "PUOLO" being 5191.57 feet North and 4169.07 feet East, thence running by azimuths measured clockwise from True South:-

1. 271° 06'                      24.81 feet along the south side of Roadway (15-feet wide) to a 3/4 inch pipe;
2. 359° 58'                      18.73 feet along L.C.Aw. 9283, Ap. 1 to Keliinui to a 3/4 inch pipe in concrete;
3. 270° 50'                      98.78 feet along L.C.Aw. 9283, Ap. 1 to Keliinui to a 3/4 inch pipe to the top of the west bank of Hanapepe River;
4. Thence along the top of the west bank of Hanapepe River along R.P. 8148, L.C.Aw. 5572-B, Ap. 3 to Kaaha, the direct azimuth and distance being:  
1°    36'    30"    165.32 feet;
5. 116° 20'                      69.74 feet along Part C of Lot 101 of Hanapepe Town Lots, First Series;

6. 175° 35' 18.91 feet along R.P. 6450, L.C.Aws. 10312 and 9134, Ap. 2 to Namaielua to a 3/4 inch pipe;
7. 85° 35' 31.78 feet along R.P. 6450, L.C.Aws. 10312 and 9134, Ap. 2 to Namaielua;
8. 116° 20' 14.96 feet along Part D of Lot 101 of Hanapepe Town Lots, First Series;
9. 179° 58' 121.92 feet along Part A of Lot 100 of Hanapepe Town Lots, First Series to a 3/4 inch pipe;
10. Thence along Part A of Lot 100 of Hanapepe Town Lots, First Series on a curve to the left with a radius of 10.00 feet, the chord azimuth and distance being:  
135° 32' 14.00 feet,  
to the point of beginning and containing an  
AREA OF 15,782 SQUARE FEET,  
MORE OR LESS.

SUBJECT, HOWEVER, to a 15-foot Road Widening Setback Line as shown on plan attached hereto and made a part hereof.

PART B:

Beginning at a 1 1/2 inch pipe in concrete at the southwest corner of this parcel of land and at the southeast corner of Royal Patent 6450, Land Commission Awards 10312 and 9134, Apana 2 to Namaielua, the coordinates of said point of beginning referred to Government Survey Triangulation Station "PUOLO" being 4950.17 feet North and 4232.16 feet East, thence running by azimuths measured clockwise from True South:-

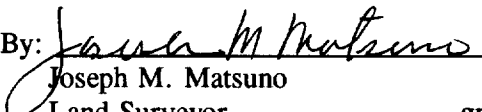
1. 175° 35' 15.53 feet along R.P. 6450, L.C.Aws. 10312 and 9134, Ap. 2 to Namaielua;
2. 296° 20' 30.37 feet along Part C of Lot 101 of Hanapepe Town Lots, First Series to a 3/4 inch pipe in concrete;

June 17, 1992

3. 85° 35'

26.10 feet along Grant 13,175 to Sakaye Yoshioka and Kayo K. Yoshioka to the point of beginning and containing an AREA OF 203 SQUARE FEET.

SURVEY DIVISION  
DEPARTMENT OF ACCOUNTING AND GENERAL SERVICES  
STATE OF HAWAII

By:   
Joseph M. Matsuno  
Land Surveyor gm

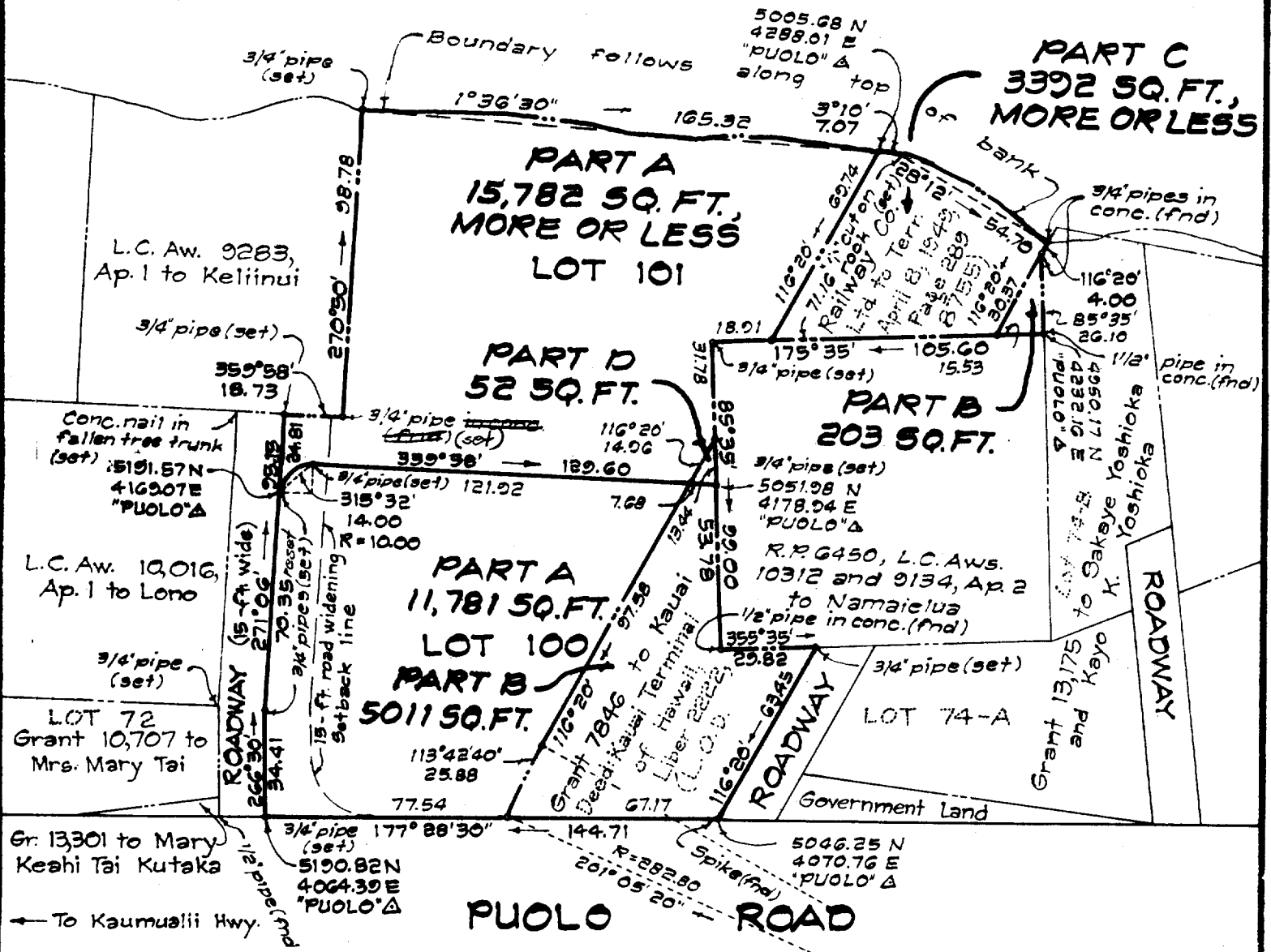
Compiled from field survey by  
D. Oyama, F.B. No. 2077 and  
Govt Survey Records.

TRUE NORTH  
Scale: 1 inch = 50 feet

Hanapepe

River

R. P. 8148, L.C. Aw. 5572-B, Ap. 3 to Kaaha



HANAPEPE TOWN LOTS, FIRST SERIES

LOT 100, PARTS A AND B  
AND

LOT 101, PARTS A, B, C AND D

Hanapepe, Waimea, Kauai, Hawaii

Scale: 1 inch = 50 feet

Lot 101 re-staked  
Aug. 25, 1903.

Staked By D. Oyama  
F. B. No 2077 pg 33  
June 2, 1992

JOB. K-179(91)

C. BK. G, p 22; D. Oyama

TAX MAP: 1-9-10: 2 & 3

SURVEY DIVISION  
DEPARTMENT OF ACCOUNTING AND GENERAL SERVICES  
STATE OF HAWAII

JFA June 17, 1992

KAUAI FILE, CARTON 22A