

Lot 10  
Homestead Map # 24  
Koolahua.

Grant No.

TO

Date.

File in Carton 51.

Checked

Description of Lot 10, Homestead Map #24

Koolohua, Ap. 1, Kona, Molokai.

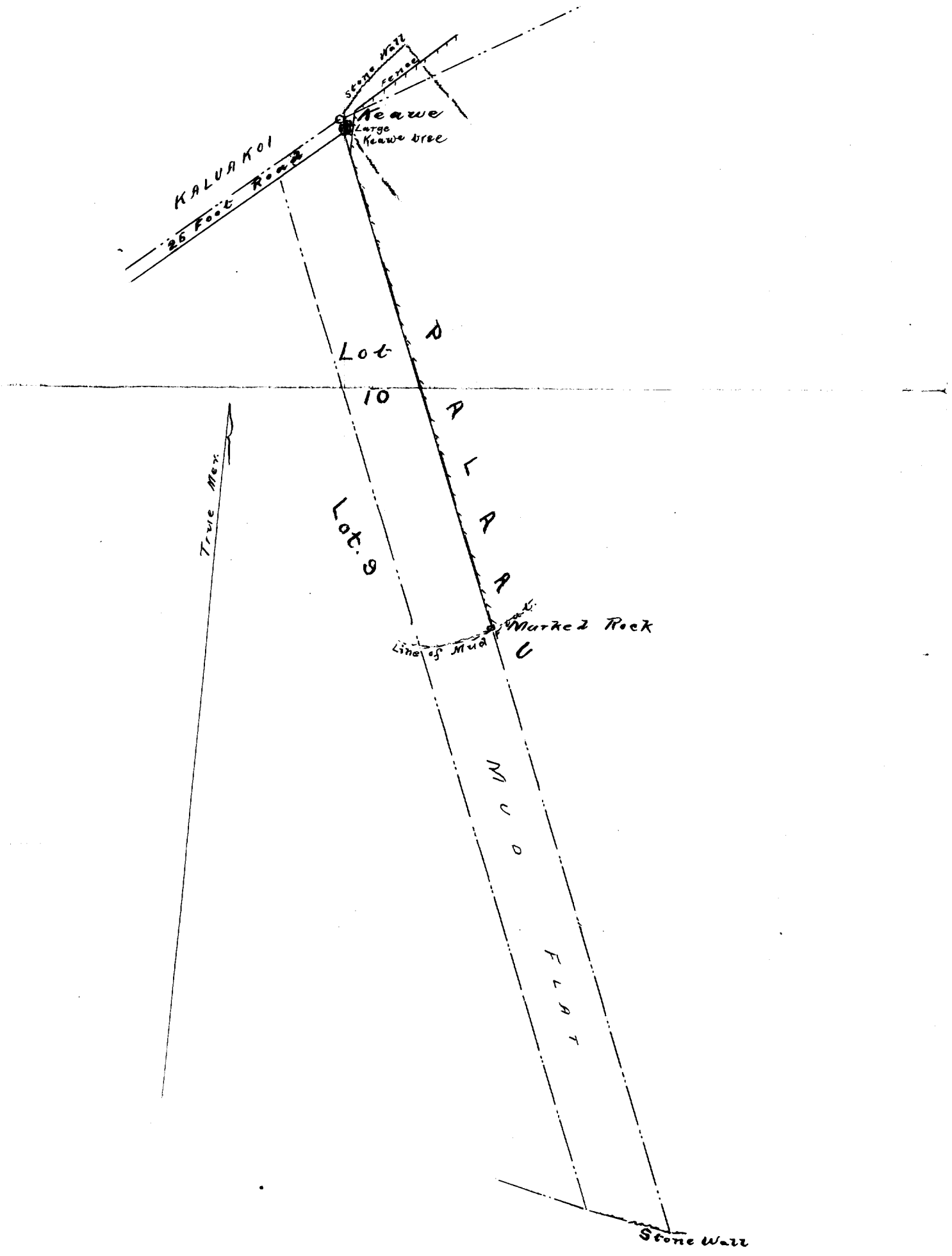
Beginning at a point on the makai side of a 25 foot road, said point being 25 feet South and 11 feet East of the point known as Keawe, and running:

- 1 S. 21° 54' E. True, 2803.5 ft along Palau to Fish Pond wall - at 1265.5 feet on this line, it passes over a marked rock,
- 2 N. 80° 30' W. True 210 feet along Sea Show,
- 3 N. 21° 54' W. 2628 feet along Lot 9 to road,
- 4 N. 49° 35' E. 190 feet along road to the Initial point.

Area 11.22 Acres

Walter Wall.

February 1892



Scale 300 Feet to an Inch.