

Lot 9

Homestead Map #23

Kanihooloa

Grant No.

TO

Date.

Copy furnished Law Office  
Feb 26 1914.

---

Gr. 6128 J. N. Uahinui

---

File in Carton 50.

Description of Lot 9, Homestead Map #23  
 Kamiloloa, Kona, Molokai.

Apana 1.

Beginning at a stone marked with a cross at sea shore, 942 feet East of Govt fish pond wall at a place known as Kalua'loa from which stone, the Government Survey Station "Kauakakai" bears N. 72° 43' W. True, and "Makakupaia" " N. 50 38 E. as shown on Homestead Map No. 23, on file in the Office of the Government Survey, and running:-

- 1 N. 77° 30' W. True 394½ feet along sea shore;
- 2 N. 20° 07' E. " 216 feet along Lot 8, Apana 1 to road;
- 3 S. 69 53 E. " 400 feet along road to a stone marked with a cross;
- 4 S. 23 37 W. " 164½ feet along the boundary between the two Kamiloloas to the initial point.

Area 7.70 Acres

OK.  
 NEW

*Apana 2*

Beginning at a stone marked with a cross on the mauka side of a 30 foot road, said point being 178 feet North and 77 feet East of the point at Sea Shore known as Kalua<sup>low</sup> ~~low~~ <sup>as shown</sup> on Homestead Map No. 73 on file in the Office of the Government Survey, and running;

- 1 N. 69° 53' W. True 403 feet along road,
- 2 N. 27 40 E. i. 2638 feet along Lot 8, Ap. 2
- 3 S. 74 19 ~~W.~~ <sup>E.</sup> 275 feet along Govt. land to a stone marked with a cross.

From this stone the Govt. Survey Station "Kauakakai" bears N. 88° 41' W. True and "Makakipai" bears N. 54° 51' E. True. Then  
 4 S. 23° 37' W. True 2640 feet along the boundary between the two Kamiloae to the Initial point.

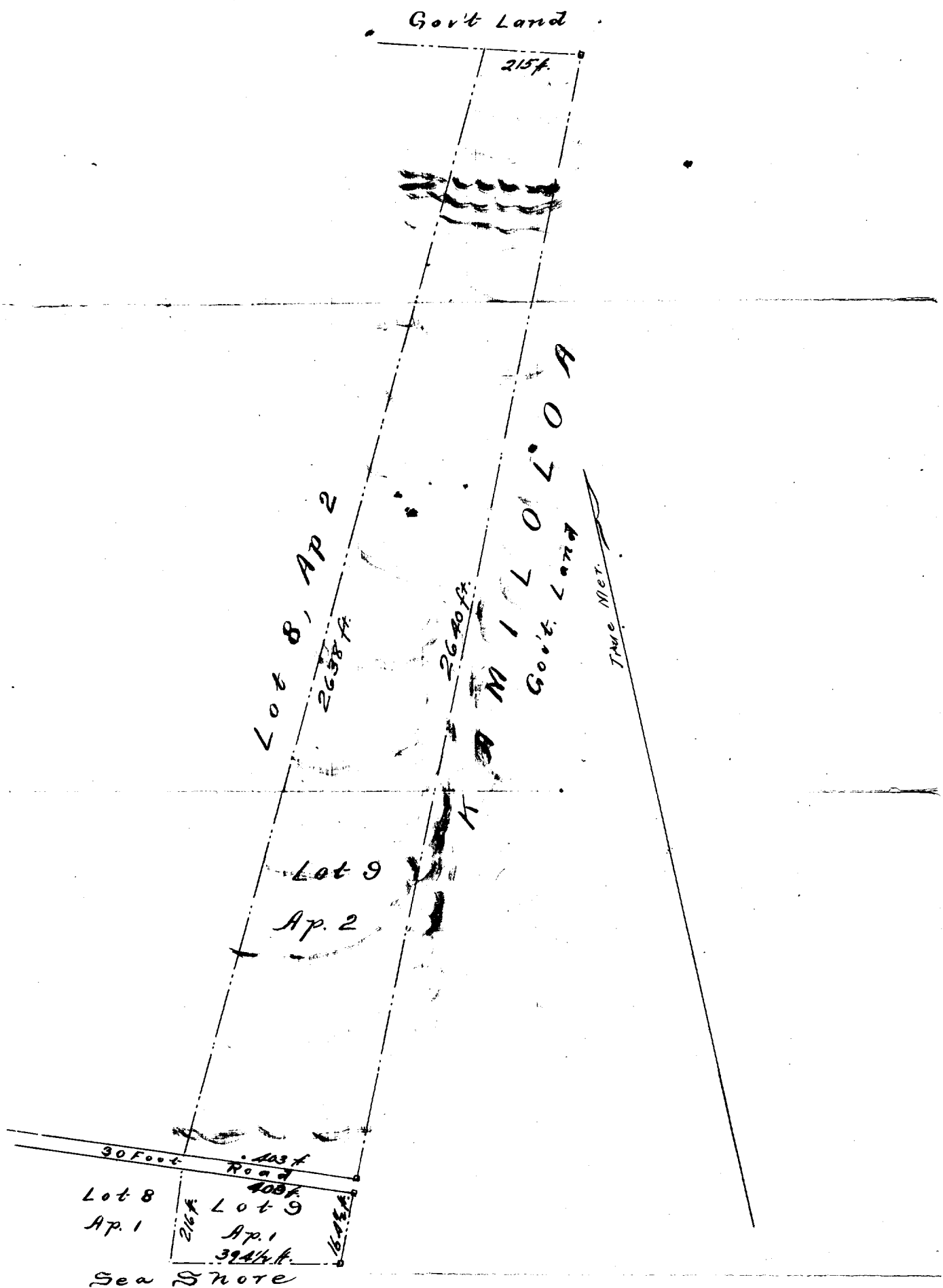
Area 18.50 Acres

Walter E. Hall

1892

February, 1892

14319 14360  
 14319 14360  
 14319 14360



Scale 300 Feet to an Inch