

Lot 8. 4071  
Homestead Map 3.  
Kaapahu.

Kimo Rotomah

Copy Furnished for Grant

Aug 19<sup>th</sup> 1947

Grant No. 4071

✓  
File in Carton 77

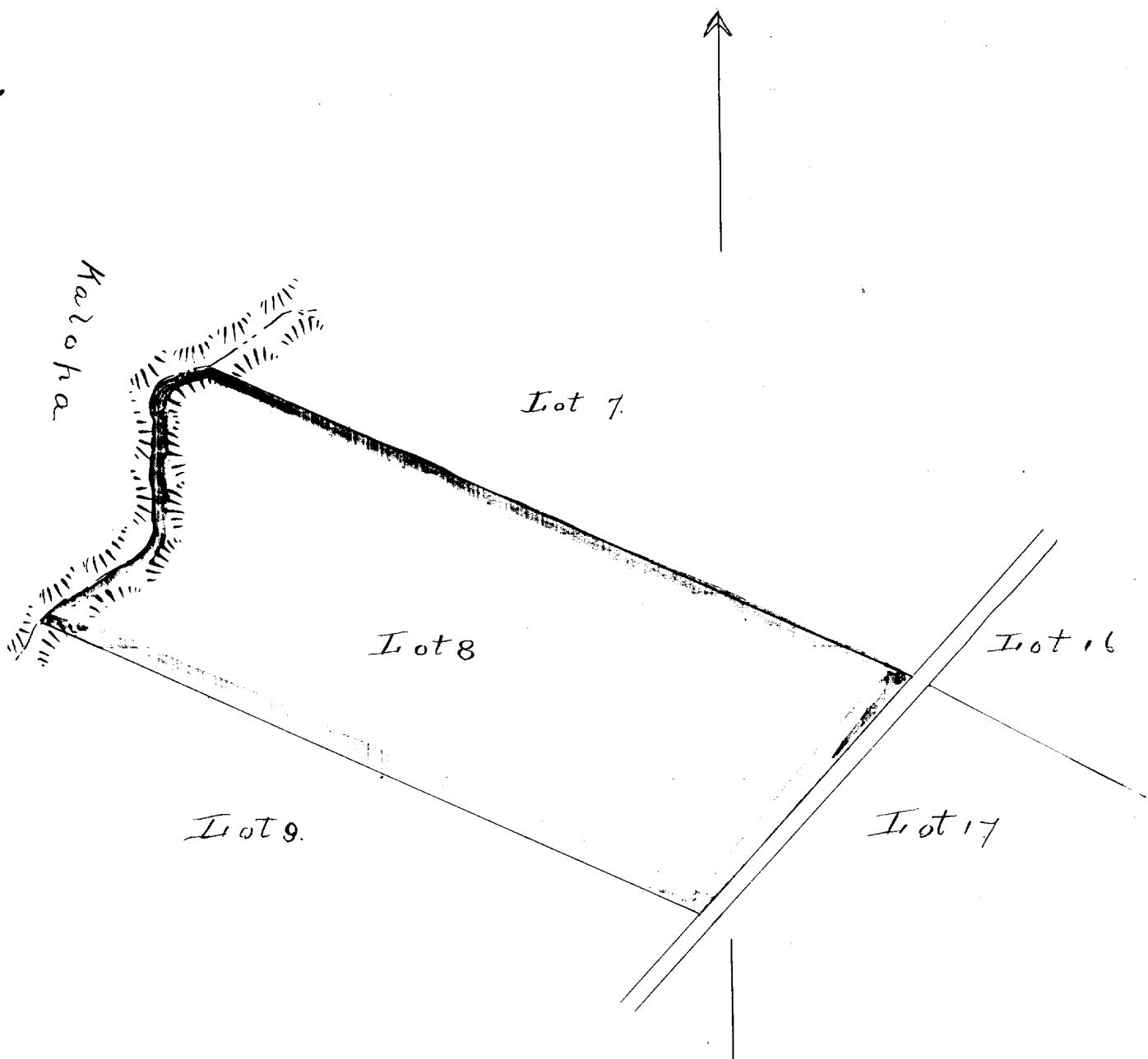
Description of Lot 8 Homestead map. 3.  
of Kaapaha, etc., Hamakua, Hawaii.

Beginning at south corner of Lot 7, at 30 ft. Road,  
this point being S. 56.60 ft. W. 164.5 ft. <sup>approx</sup> from Kalamia  
Station, thence running by true bearings:

1. N. 65° 25' W. 146.8 ft along Lot 7 to middle of Gulch
2. S. 72° 40' W. 115 " " bottom of Gulch.
3. S. 0° 30' E. 295 " " — " —
4. S. 56° 20' W. 271 " " — " —
5. S. 65° 30' E. 137.5 " " Lot 9 to 30 ft Road
6. N. 43° 0' E. 605 " " 30 ft road to point of begin-  
ning and containing an area of 18 1/4 acres

Nov. 5th 1895

Notes of Survey by O. Johnson  
Survey by J. F. Brown.



Kalooha

Lot 7.

Lot 8

Lot 16

Lot 9.

Lot 17

Scale 300 ft = 1 inch