

Description of Lot 7,  
Homestead Map 16

Waipunaui Lots,  
Hilo, Hawaii

Grant No.

TO

Date.

Description of Lot 7.

Homestead Map 16.

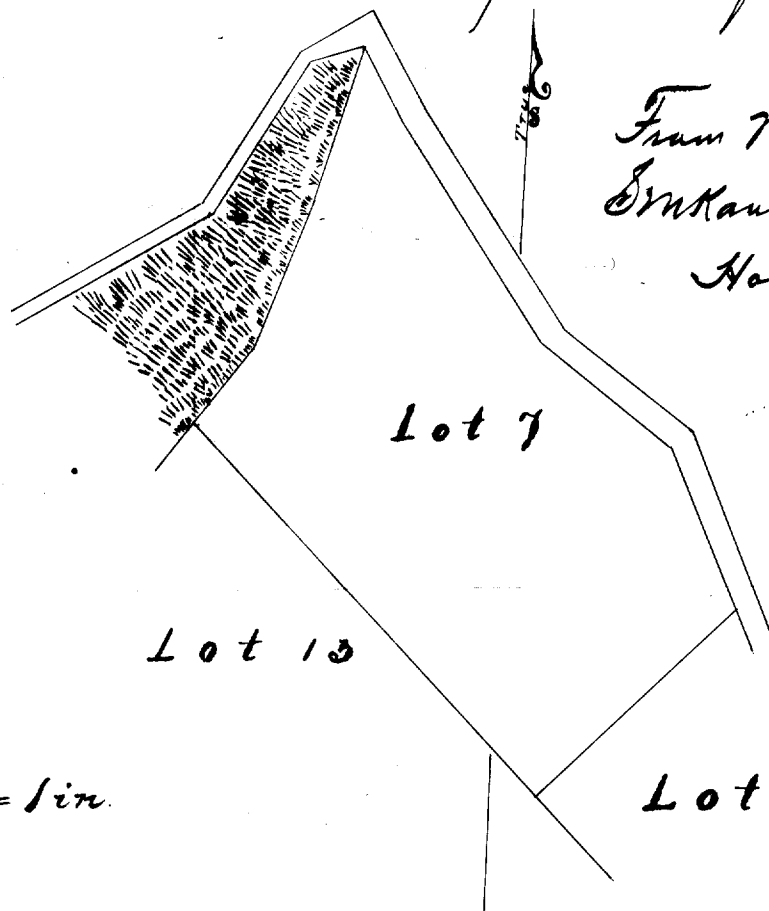
Waipunaiahi Lots - Hilo, Hawaii.

29910 3007.1 14.00

7018

Beginning at East corner of this lot, at junction with Lot 8. 1550 feet South. 7866 ft West of concrete reference block at South corner of Lot 4, and running as follows:

- 1 S 44° 30' N true 490 ft. along Lot 8;
- 2 N 45° 30' W true 790 ft along Lot 13;
- 3 N 36° 20' E true 150 ft along edge of Pali.
- 4 N 16° 55' E true 500 ft the edge of the Pali being the boundary.
- 5 S 31° 40' E true 130 ft along road. (40 ft wide)
- 6 S 35° 00' E true 412 ft along the same;
- 7 S 54° 10' E true 260 ft along the same,
- 8 S 24° 10' E true 270 ft along the same to initial point, and containing an area of 10.19 acres.



From Map by A.D.L.

S. M. Kawasumi

Honolulu

June 15 1891

Lot 7

Lot 13

Lot 8.

Scale 300ft = 1 in.

Lot 7  
Waipunaiei Homesteads  
North Hills, Hawaii

Copy furnished Pub. Lands  
Mar 30 1904

Grant 4800  
Charles Kaohu

File in Carton 131.

"Readjusted"

WAIPUNALEI HOMESTEAD LOTS.

North Hilo, Hawaii.

Lot No. 7

Description and Plan:-

Beginning at the West corner of this Lot, at a post at the corner of fence and row of trees, on the South edge of Kaawalii Gulch. The coordinates of which point are 1718.1 feet North and 2838.1 feet West of Waipunalei Trig. Station, as shown on Hawaii Territory ~~Surveyor~~ Survey Reg. Map No. 2193, and running by true bearings :-

- 1. N 36° 20' E 150.0 feet along Lot No. 1 ;
- 2. N 17° 10' E 333.0 " " " " " to Road reserve ;
- 3. N 28° 04' E 56.0 " " Gov't. Road reserve ;
- 4. N 88° 09' E 88.0 " " " " " ;
- 5. S 41° 16' E 407.0 " " " " " ;
- 6. S 63° 44' E 265.0 " " " " " ;
- 7. S 0° 54' E 296.0 " " " " " ;
- 8. S 36° 07' E 48.0 " " " " " to the East corner ;
- 9. S 43° 00' W 387.0 " " Lot No. 8 to the West corner ;
- 10. N 45° 34' E 790.0 " " " " 13 to the point of beginning.

Containing 10.57 Acres.

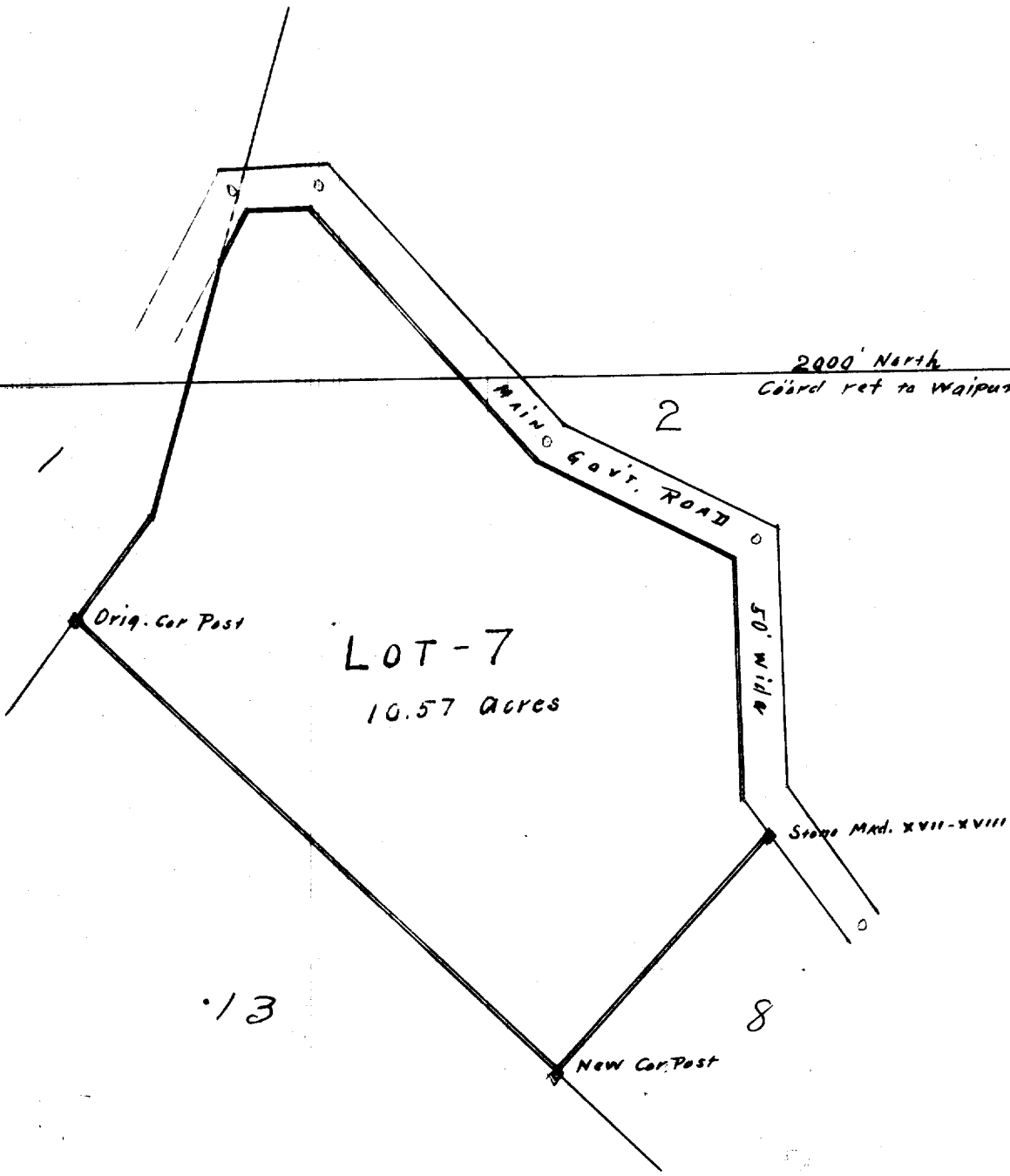
*J. H. Moragne*  
Surveyor.

Hilo, Hawaii.

July 20th. 1903.

The above Description Checks as follows:-  
Coord. S. of E. Waipunalei Trig. Sta = 1718.1 N 2838.1 W  
" " from same Sta = 1721.1 N 2835.6 W  
Error in closing = 3.0 2.5

E. W. Baldwin  
Assist in Charge of Work.



3000' West

Scale 200' = 1-inch