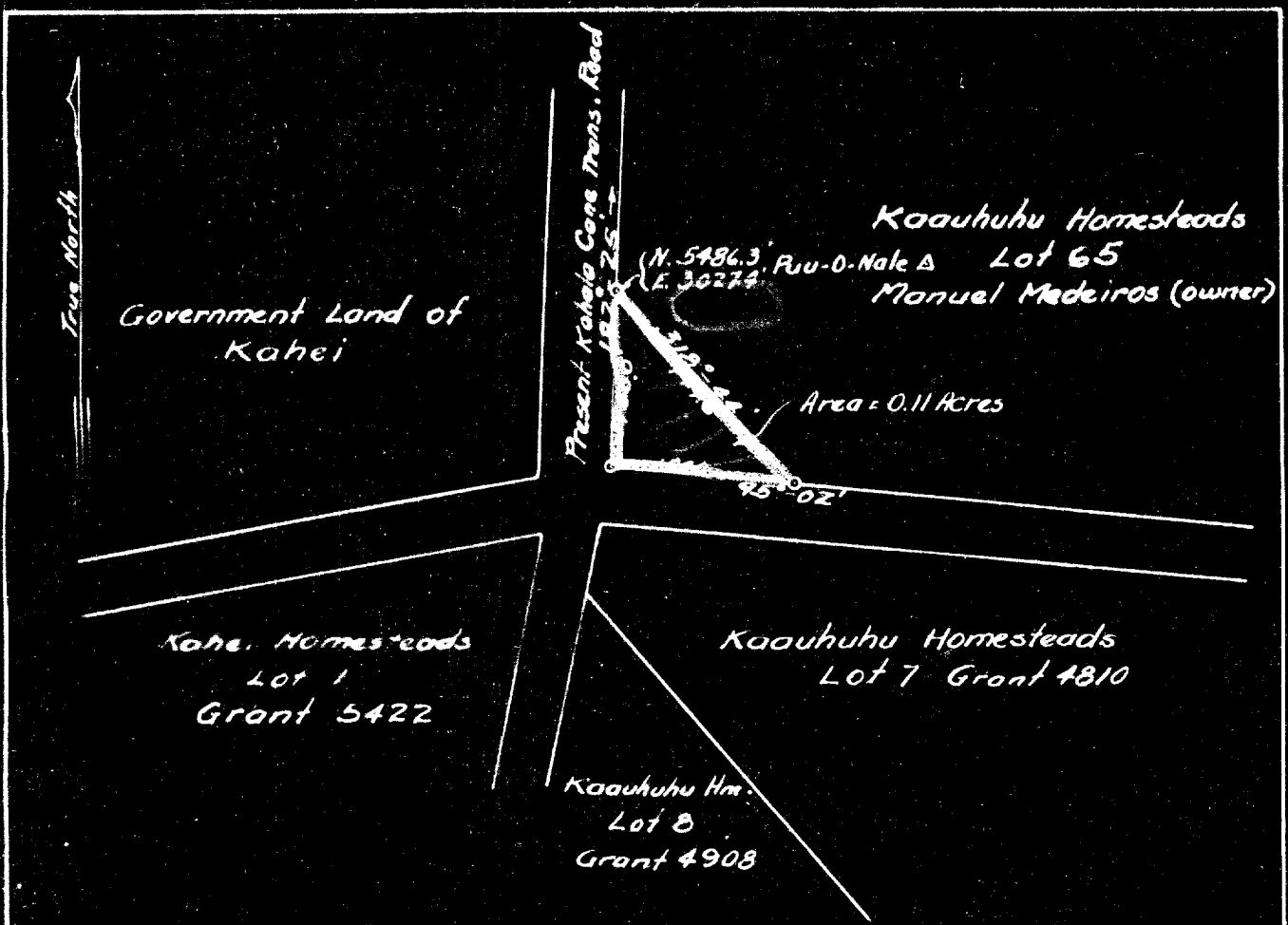


Por; of Lot 65
Kaunahuu Hmstd. 2nd. Series.
North Kohala, Haw.

Acquired by County of Haw.
for Rd. purposes.

File in Carton 58



OFFICE OF THE CITY & COUNTY ENGINEER
HILO, HAWAII

PLAN AND DISCRPTION OF A PARCEL OF LAND
IN LOT 65, TO BE ACQUIRED BY THE GOVERN-
MENT FOR ROAD RIGHT-OF-WAY, FROM MA-
NUEL MEDEIROS, KAAUHUUH HOMEMSTEADS,
SECOND SERIES, NORTH KOHALA, HAWAII.

DESCRIPTION

Beginning at the North corner of this parcel
the coordinates of said corner referred to
Govt. Survey Trig. Sta. Puu-O-Nale being
N. 5486.3' and E. 30274' thence running by
true Azimuths and distances as follows:

1. 318° 44', 144.6' through Lot 65,
2. 95° 02', 100.0' along a road right-of-way,
3. 182° 25', 100.0' to the point of beginning
containing an area of 0.11 Acres.

Submitted by: W. H. Barringer
City & County Engineer

Approved: Jan 16, 1926

Manuel Medeiros
Chairman & Executive Officer
Bd. of Supervisors, County of Hawaii.

100