

Kat 6.
Kahuku, Hilo
Map 10

Copy furnished Public
Lands Office - June 15-1907

Grant 4510

E. A. Horan.

File in Carton 108.

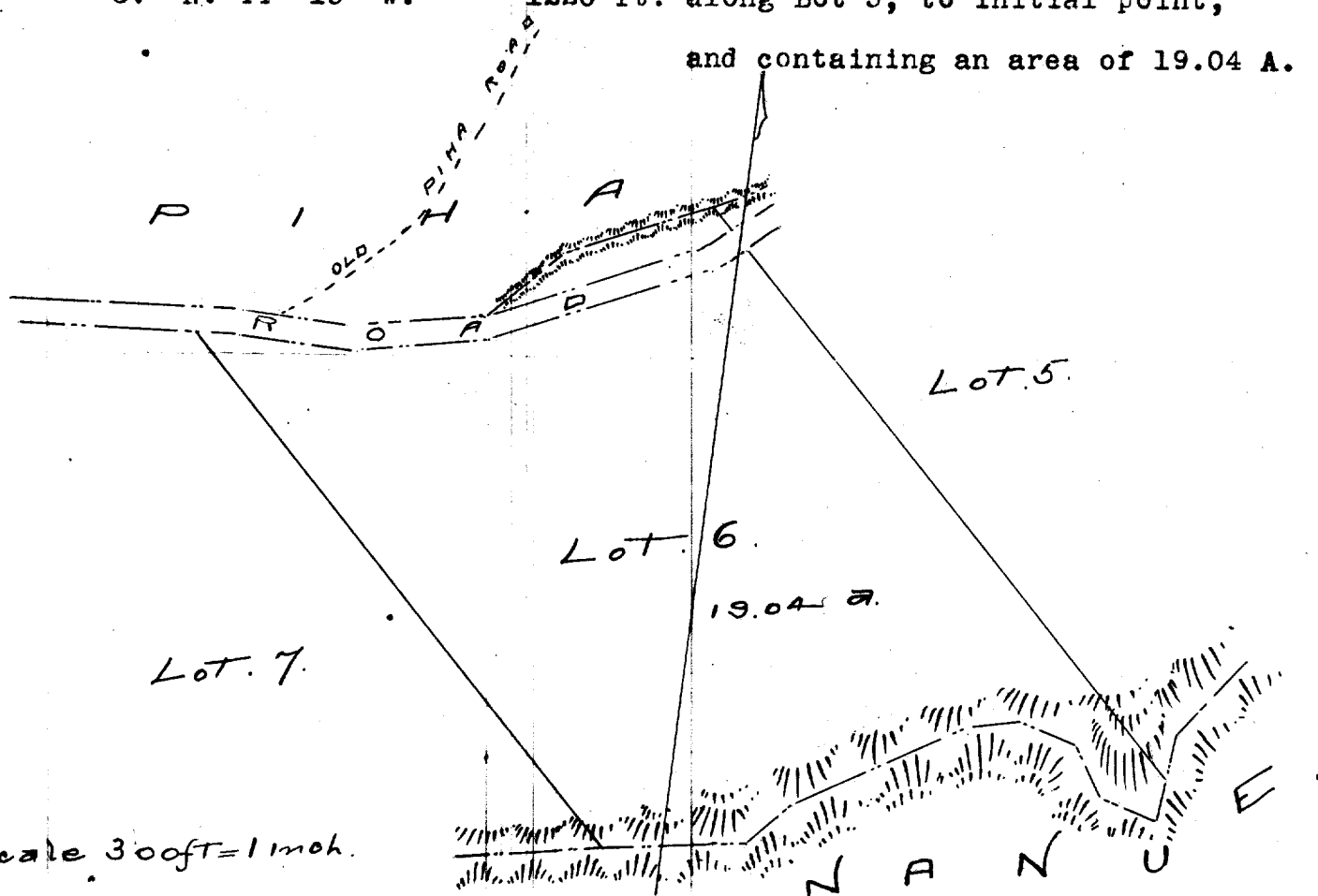
DESCRIPTION OF LOT 6. HOMESTEAD MAP 10.

KAHUKU, HILO, HAWAII.

---c00---

Beginning at a point in Alenaio Gulch, being the West
of Lot 5, 682 ft. South, 985 ft. West of Kahuku Trig Station and
running as follows:-

- 1.- S. 66° 55' W. true 262 ft. along middle of Alenaio Gulch.
- 2.- S. 43° 42' W. " 160 ft. along the same, to N. side of road.
- 3.- S. 80° 40' W. " 494 ft. across road.
- 4.- S. 44° 30' E. " 1098 ft. along Lot 7.
- 5.- N. 83° 12' E. " 240 ft. along middle of Waiehu Gulch.
- 6.- N. 59° 50' E. " 505 ft, along Nanue, the middle of Waiehu
Gulch being the boundary.
- 7.- S. 73° 40' E. " 263 ft. along Nanue, the middle of Waiehu
Gulch being the boundary.
- 8.- N. 44° 15' W. " 1220 ft. along Lot 5, to initial point,
and containing an area of 19.04 A.



Scale 300ft = 1 inch.