

Description of Lot 5

Hammstead Map 16

Waipunauei Lots Hills

Hawaii

Grant No.

TO

Date.

Description of Lot 5.

Homestead Map, 16;

Waipunaia Lots Hilo.

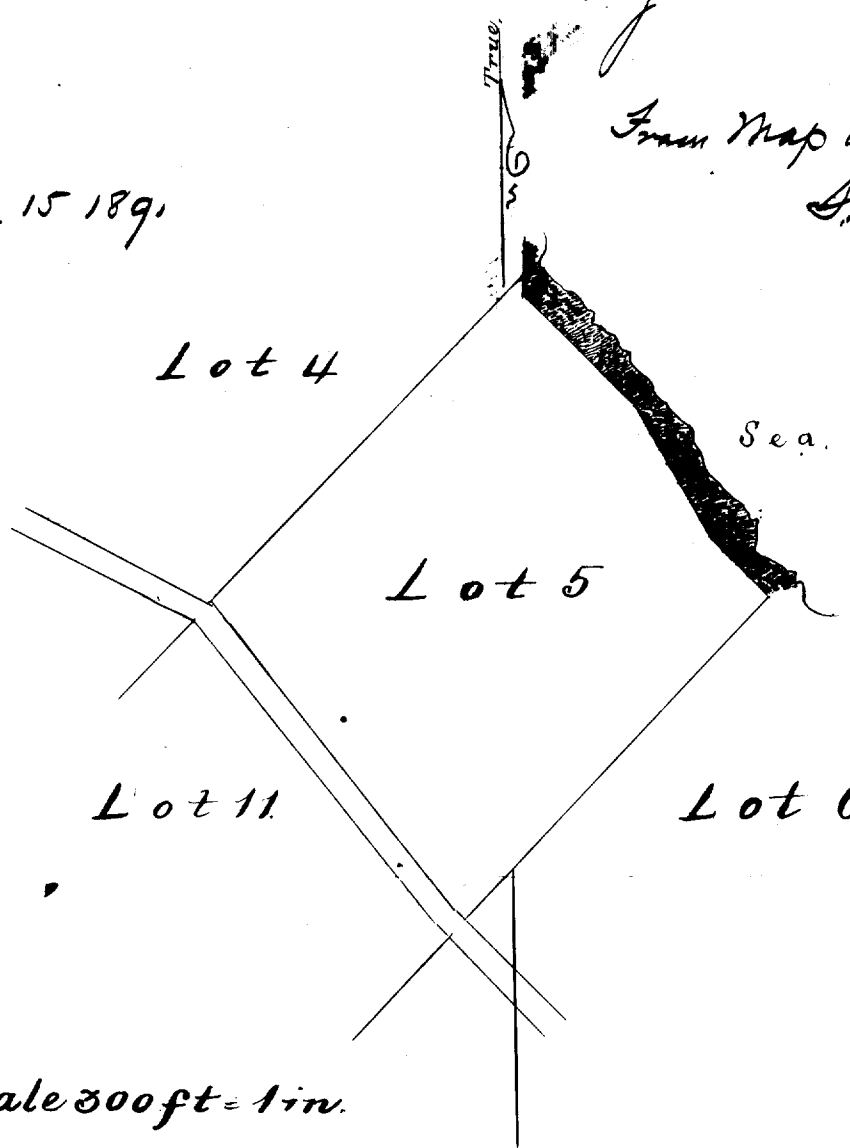
2000 2000 1000

Beginning at South corner of this Lot, being North West corner of Lot 6. 495 ft South 390 ft East of reference concrete block at South corner of Lot 4. and running as follows " " " "

- 1 N 44° 30' E true 690 ft along Lot 6.
 - 2 N 36° 15' W true 635 ft, the edge of Pali being the boundary.
 - 3 S 44° 30' W true 710 ft along Lot 4 to reference concrete block.
 - 4 S 37° 30' E true 615 ft along Lot 4.
 - 5 S 44° 00' E true 17 ft along Road to initial point, and
- " " " " containing an area of 10.700 acres.

June 15 1891

From Map by A. B. Schuchert.
S. M. Lanahan



Scale 300 ft = 1 in.

Lot 5.
Kaipunalei Homesteads
North Kilo, Hawaii

Copy furnished Naval Office
Nov. 12, 1906

Grant 4999
Amos J. Ignacio

File in Carton 132.

"Readjusted"

WAIPUNALEI HOMESTEAD LOTS.

North Hilo, Hawaii.

Lot No. 5

Description and Plan:-

Beginning at the West corner of this Lot, at a point on the makai edge of the main Gov't. Road reserve; the coordinates of which point are 99.3 feet South and 94.2 feet West of Waipunalei Trig. Station as shown on Hawaii Territory Survey Reg. Map No. 2193, and running by true bearings :-

1. N 44° 30' E 700.0 feet along Lot No. 4 to the top of the sea bluff ;
2. S 36° 15' E 645.0 " " the edge of the sea bluff ;
3. S 44° 30' W 687.0 " " Lot No. 6 to a point on the ~~makai~~ makai edge of the Gov't. Road reserve ;
4. N37° 30' W 643.0 feet along the Gov't. Road reserve to the point of beginning.

Containing 10.17 Acres.

J. H. Moragne

Surveyor.

Hilo, Hawaii.

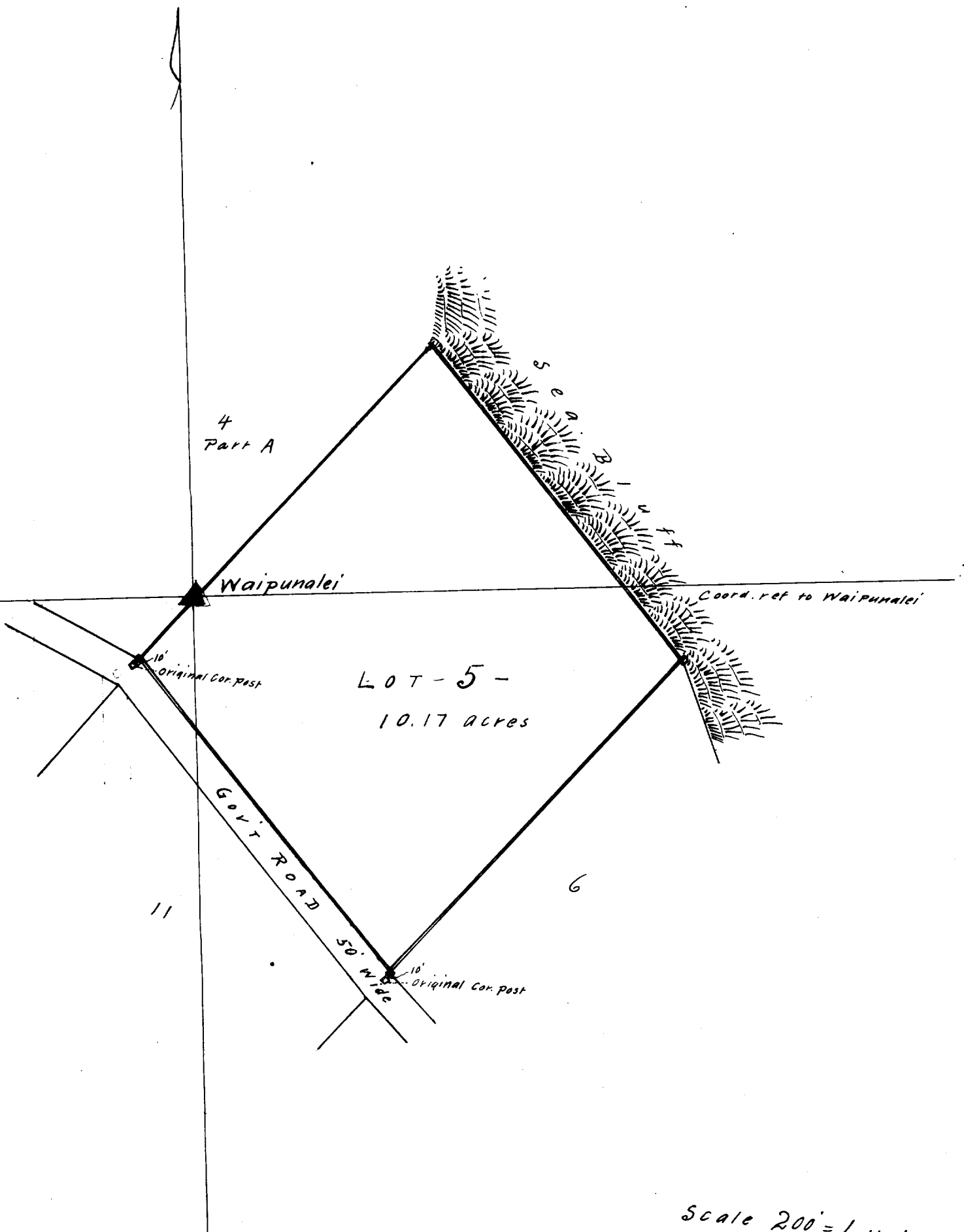
July 20th. 1903.

The above Description checks as follows:-
 Coord. Trig. Ref. to Waipunalei Trig. Sta. = 99.3 S 94.2 W
 " " from Bearings & Dist. = 100.1 S 95.2 W
 Error in closing = 0.8 1.0

E. W. Baldwin
Asst. in Charge of Work.

N	S	E	W	area
1009.4	1010.2	877.0	877.0	MK.

Newton (from 1906)



Scale 200' = 1 inch