

4273
Oahu Homesteads

Lot 56.

MAP 6.

Atahipua Section

N. Kona, Hawaii

Copy furnished land office
Aug. 15th 1895

E. M. Taiwa

Copy Furnished for Grant

Jan. 6. 1899.

Grant No. 4273.

File in Carton 18

For Grant to *C. M. Paine*
Purchase Price \$ 80⁰⁰/₁₀₀.

Description of Lot 56

Oona Homestead, N. Kona, Hawaii.

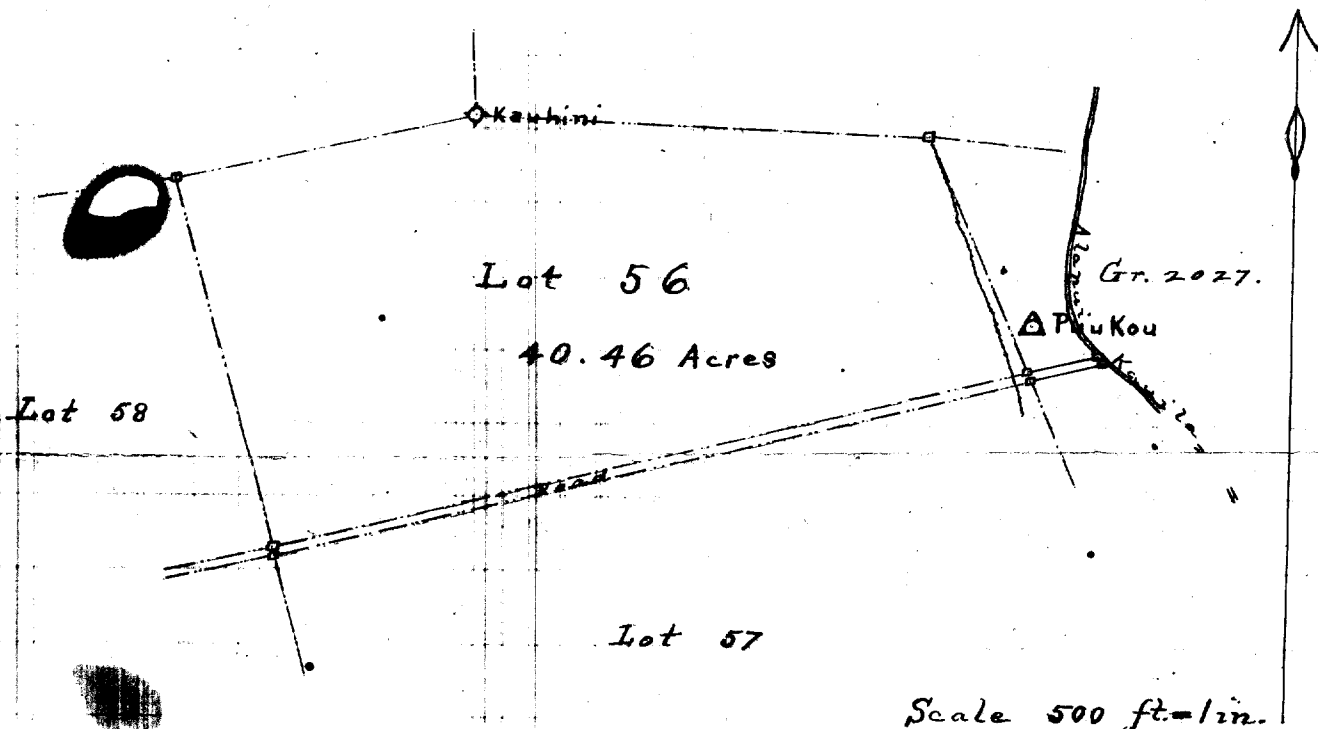
Beginning at a stone marked with + and
drill hole, S. 4° 5' W., true, 125 ft. from the 2nd
Trig. Station *Puu Kou*, and running as follows:

- 1 N. 23° 30' W. true 670 ft. along Grant 2027, *Kamehame*;
- 2 N. 88° 14' W. true 1184 ft. along Lot 55 to its S.W.
corner;
- 3 S. 71° 58' W. true 803 ft. along *Gov't* land to N.
corner of Lot 58;
- 4 S. 15° 30' E. true 1000 ft. along Lot 58;
- 5 N. 75° 56' E. true 2029 ft. along the edge of road
as laid out, to initial point, and
containing an area of 40⁴⁶/₁₀₀ Acres.

Honolulu, Jan. 27th, 1890.

Henry C. M. Alexander
Surveyor.

Lot 55



Scale 500 ft. = 1 in.