

*Lat. 5*  
*Kaluku Hills*  
*Map 10*

Grant No. 4782

TO Andrew Chalmers

Date.

W +7.0

File in Carton 108.

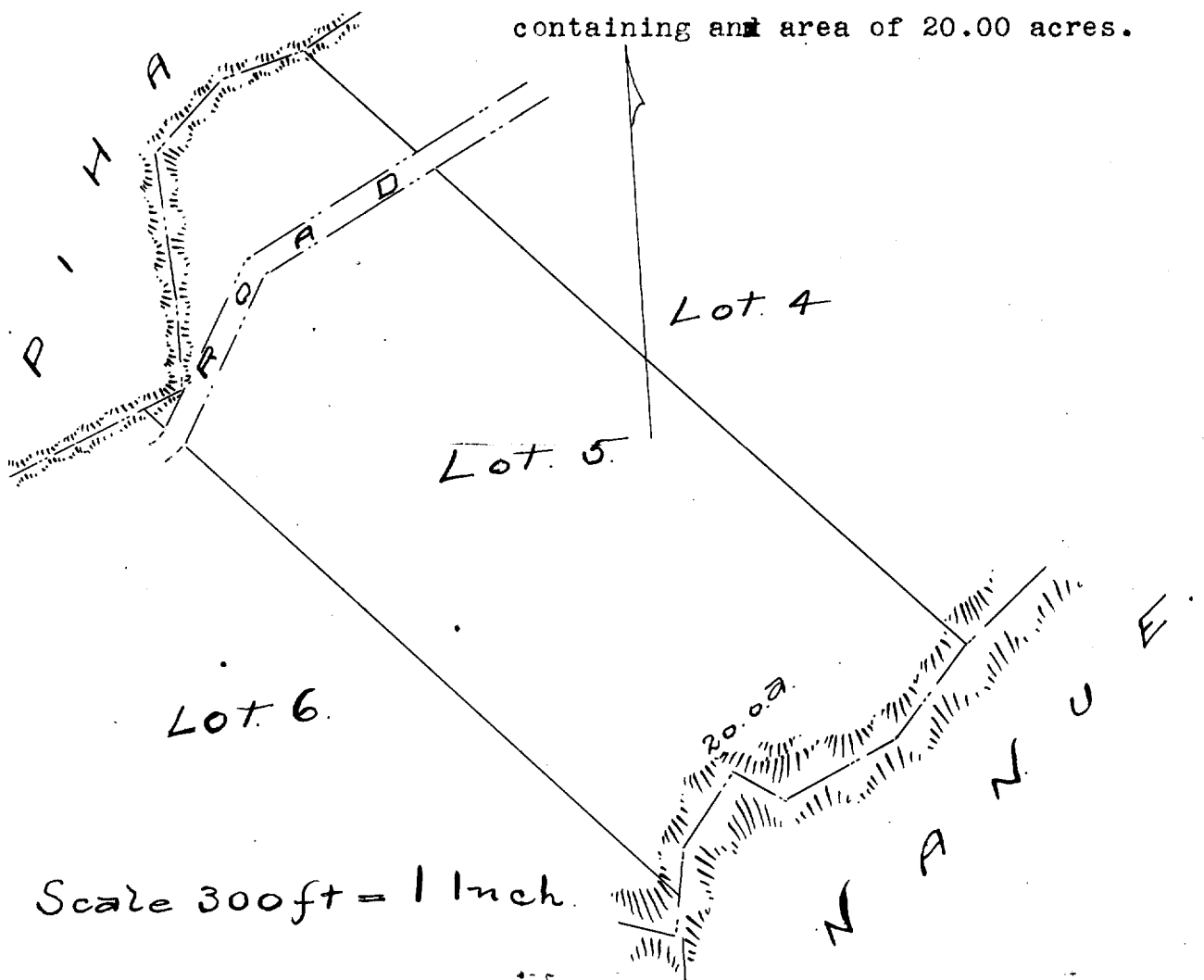
DESCRIPTION OF LOT 5. HOMESTEAD MAP 10.

KAHUKU, HILO, HAWAII.

---000---

Beginning at a point in Alenaio Gulch, being the W.  $\angle$  of Lot 4, 668 ft. W. 100 ft. South of Kahuku Trig Station and running as follows:-

- 1.- S.  $59^{\circ} 10'$  W. true 305 ft. along Piha, the middle of Alenaio gulch being the boundary.
- 2.- S.  $6^{\circ} 55'$  W. " 434 ft. along Piha, the middle of Alenaio Gulch being the boundary.
- 3.- S.  $44^{\circ} 15'$  E. " 1220 ft. along Lot 6.
- 4.- N.  $52^{\circ} 25'$  E. " 640 ft. along Nanue, the middle of Waiehu Gulch being the boundary.
- 5.- N.  $44^{\circ} 30'$  W. " 1500 ft. along Lot 4, to initial point and containing an area of 20.00 acres.



Description of Lot 5:

Homestead Map 10:

Kahuku Hills, Hawaii;

Beginning at a point in Alenais gulch, being the West L of Lot 4, 668 ft. ~~that~~ 700 ft South of Kahuku Trig Station and running as follows:

S 59 10 W true 305 ft along Pihā, the middle of Alenais gulch being the boundary;

S 6 55 W true 434 ft along Pihā, the middle of Alenais gulch being the boundary;

S 44 15 E true 1220 ft along Lot 6;

N 52 25 E true 640 ft along Nanue, the middle of Kaiehu gulch being the boundary;

N 44 30 W true 1500 ft along Lot 4, to initial point, and containing an area of 20.00 acres.

(Less width of road).