

Description of Lot 4

Homestead Map 16.

Waipunaui Lots
Kilo, Hawaii

Grant No.

TO

Date.

Description of Lot 4.

Nonestead Map, 16.

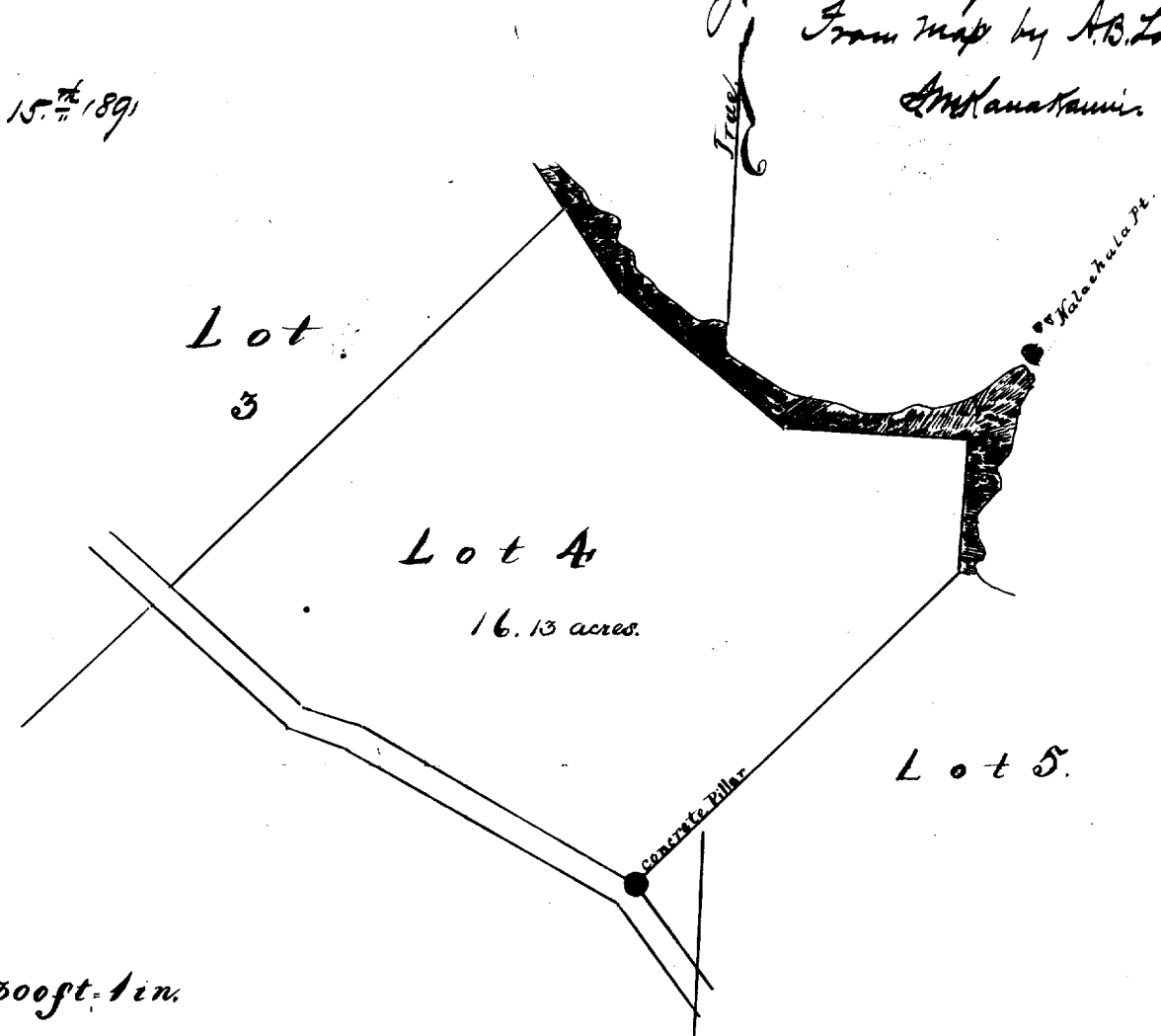
Waipunalii Lots, Hills Hawaii

Beginning at reference concrete block at South corner of this Lot and running as follows:

- 1 N 44° 30' E true 710 ft along Lot 5.
- 2 N 4° 45' E true 210 ft along edge of Pali.
- 3 N 88° 30' W true 297 ft along edge of Pali.
- 4 N 46° 5' W true 475 ft. top of Pali, being the boundary.
- 5 S 44° 30' W true 865 ft. along Lot 3.
- 6 S 48° 20' E true 282 ft along Road.
- 7 S 71° 50' E true 95 ft. along the same.
- 8 S 62° 00' E true 505 ft along the same, to initial point, and containing an area of 16 $\frac{13}{100}$ acres.

From map by A.B. Lockman
 Honolulu, Hawaii.

June 15th 1891



Scales 300ft. = 1 in.