

Lot 4

Homestead Map No. 5

Pauilo, Hamakua

Copy Furnished for Grant

July 29, 1898

Grant No. ~~4228~~

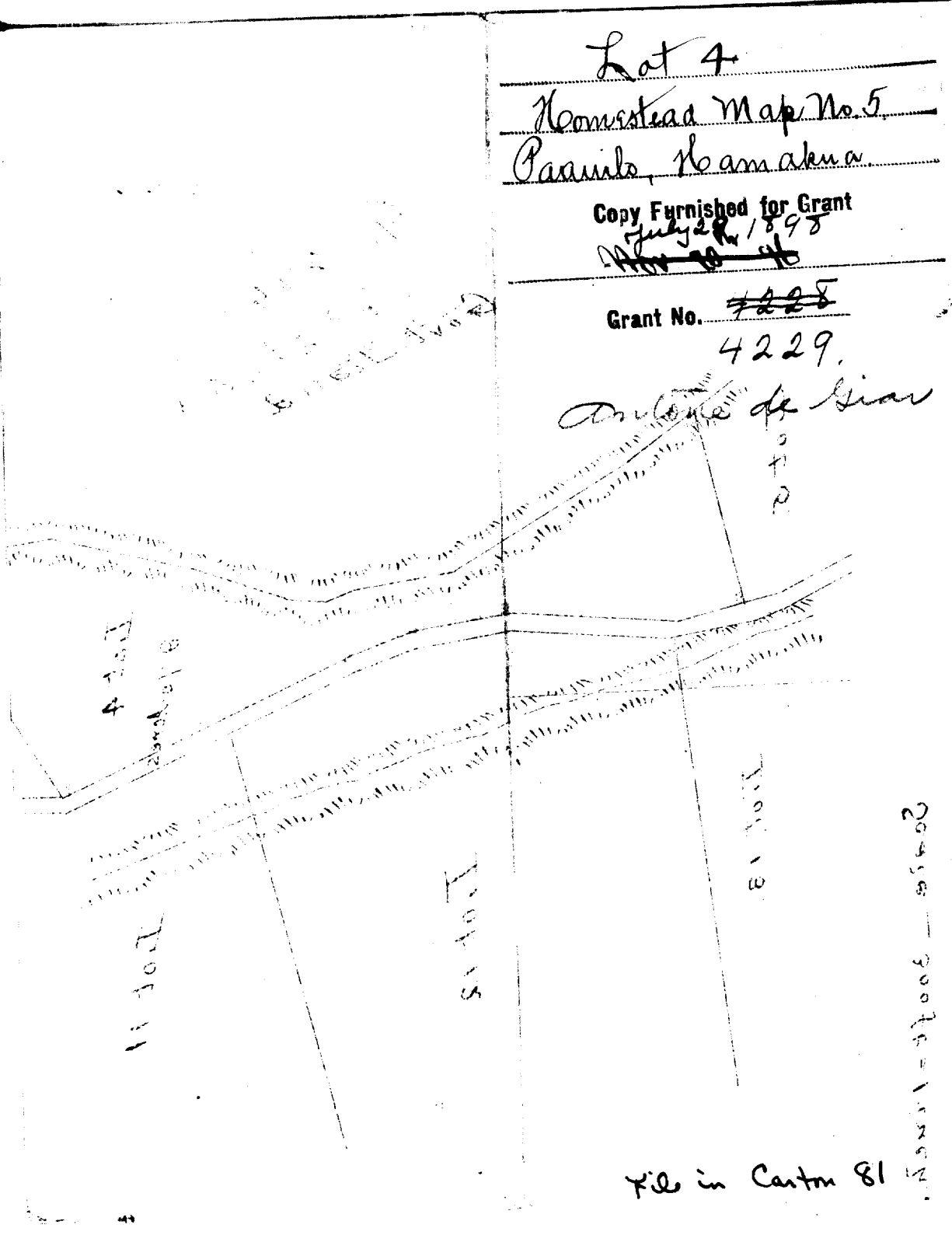
4229.

Antonio de Sian

3
7
P

Scale - 300 ft = 1 inch

File in Carton 81



Homestead Map No. 5

Paauiilo, Hamakua, Hawaii.

Lot 4

Beginning at the east angle, at 30 ft. road, joining lot 3,
this point being S 1685 ft. W 7829 ft. approx. from Koholalele Sta,
thence running by true bearings:

1. S 23 05 W 360 ft. along 30 ft. road;
2. S 23 43 W 280 ft. " ;
3. S 17 45 W 149 ft. " ;
4. S 7 25 W 193 ft. " ;
5. S 5 42 E 324 ft. " ;
6. S 13 28 W 152 ft. " ;
7. N 77 56 W 401 ft. along lot 5;
8. N 34 55 E 160 ft. along gulch;
9. N 29 32 E 428 ft. " ;
10. N 8 15 E 203 ft. " ;
11. N 22 28 E 53 ft. " ;
12. N 5 24 W 83 ft. " ;
13. N 20 45 W 211 ft. " ;
14. N 14 02 W 283 ft. " ;
15. N 7 42 E 160 ft. " ;
16. N 11 05 E 146 ft. " ;
17. S 59 20 E 553 ft. along Lot 3 to point of beginning.

Area 9.70 acres.

Notes of survey by O. L. Sonsoni
from Map by J. D. Brown

June 3rd. 1896.

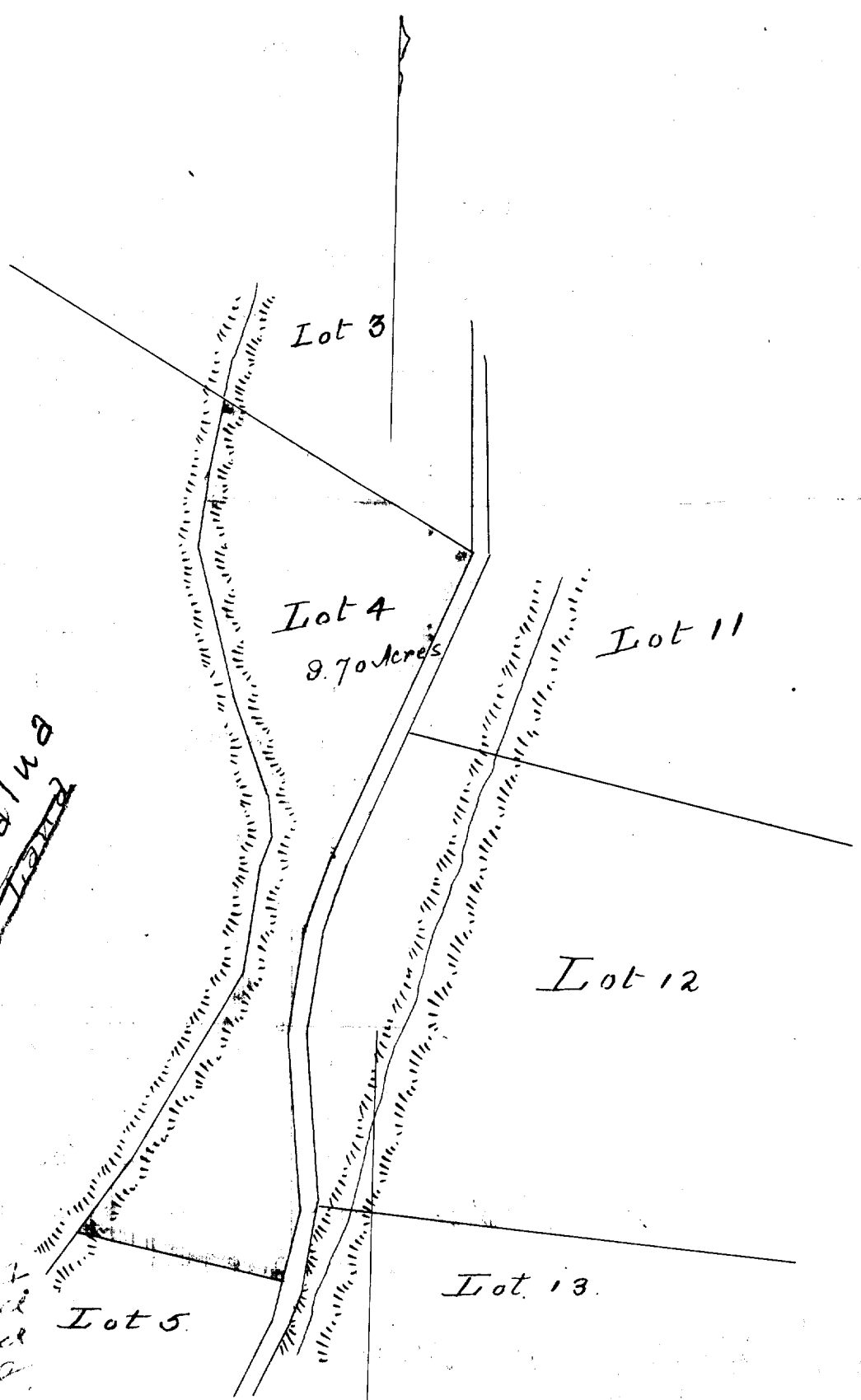
4 lot

2.0N of NW to waterway
waterway of ...

1/2 ...
1/2 ...

1/2 ...
1/2 ...

Gr 2441
~~Ke Kala~~



Scale - 300ft = 1 inch.

1/2 ...