

Lot 4

Homestead Map # 23

Kaniuloloa.

Grant No 5961

TO Raymond Joao.

Date

Copy furnished Land Office  
June 3 1913.

File in Carton 50.

Checked

Description of Lot 4, Homestead Map\* 23

Kamiloloa, Kona, Molokai.

Apana 1

Beginning at a point on the makai side of a 30 foot road, said point being 873 feet North and 1488 feet West of the point at Sea Shore known as Kalua<sup>a</sup>loa, <sup>as shown on Homestead Map No. 23 on file in the Office of the Government Survey,</sup> and running;

- 1 S. 36° 37' N. True 388 ft. along Lot 5, ap. 1 to Govt fish pond.
- 2 N. 78° 55' W. " 278 feet along Govt fish pond.
- 3 N. 36° 37' E. " 509 feet along Lot 3, ap. 1 to road.
- 4 S. 53° 23' E. " 250 feet along road to the Initial point.

Area 2.57 Acres.

Apna 2

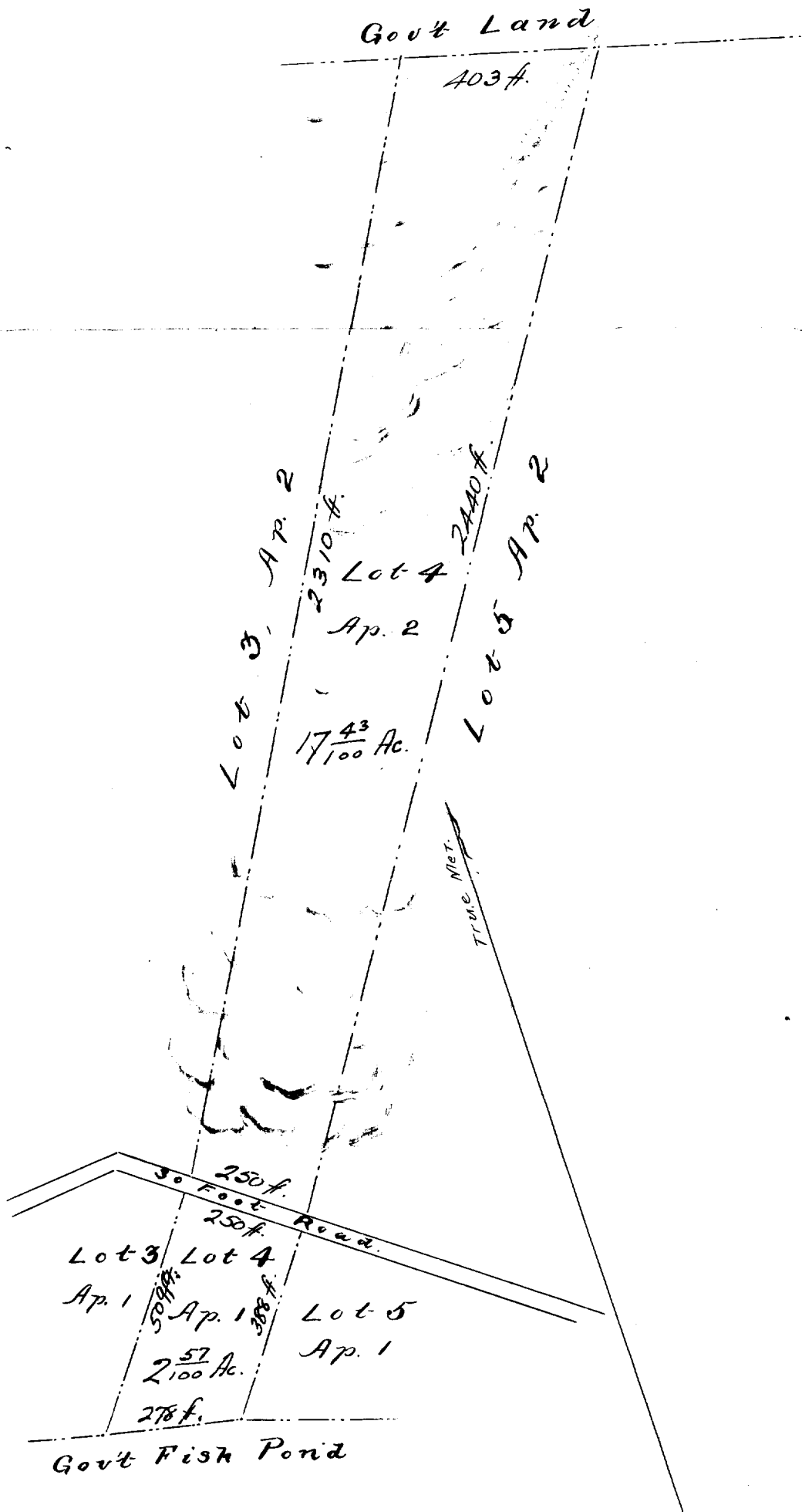
Beginning at a point on the mauka side of a 30 foot road, said point being 897 feet North and 1468 feet West of the point at sea shore known as Kaluapoua, <sup>as shown on Homestead Map No. 23 on file in the Office of the Government Survey,</sup> and running;

- 1 N. 53° 23' W. True 250 feet along road.
- 2 N. 29 10 E. " 2310 feet along Lot 3, Ap. 2.
- 3 S. 74 19 E. " 403 feet along Govt land.
- 4 S. 32 30 W. " 2448 feet along Lot 5, Ap. 2 to the Initial point.

Area 17.43 Acres

Walter C. Watt.

February 1892



Scale 300 Feet to an Inch