

Lot 4 - Part B  
Waipunaia Homesteads  
North Hill, Hawaii.

Copy furnished Land Office  
June 6/04

2. 08 29

Grant 4829

A. P. Martinez

File in Carton 131.

Readjusted:-

WAI PUNA LEI HOMESTEAD LOTS.

North Hilo, Hawaii.

Lot No. 4 - Part B

Description and Plan:-

Beginning at the South corner of this tract, at a pile of stones on the makai edge of the Gov't. Road reserve, the coördinates of which point are 119.7 feet North and 483.9 feet West of Waipunaiei Trig. Station as shown on Hawaii Territory Survey Reg.

Map No. ~~2193~~ and running by true bearings :-

1. N 60° 40' W 278.0 feet along makai edge of Gov't. Road ;
2. S 81° 00' W 26.0 " to the center of Gov't. Road ;
3. N 50° 06' W 141.0 " along the center of the old Road ;
4. N 44° 30' E 875.0 " " Lot No. 3, to the North corner at the sea bluff ;
5. S 45° 50' E 425.0 feet along <sup>the</sup> sea bluff ;
6. S 44° 30' W 771.0 " " Part A, to the point of beginning.

8.08 Acres

Less area of 50 foot Gov't. Road reserve .16 "

Containing 7.92 Acres

*J. H. Moragne*

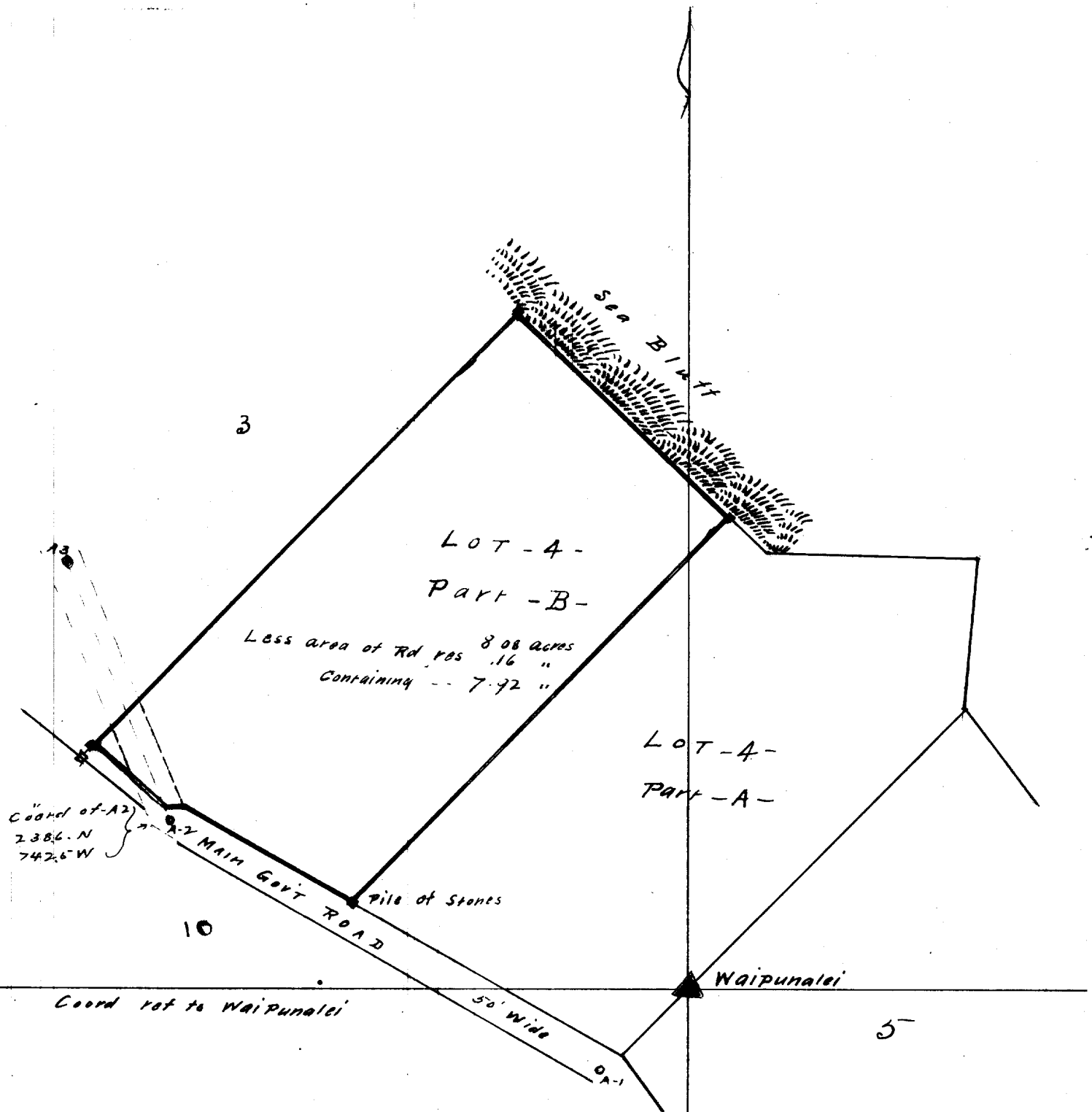
Surveyor.

Hilo, Hawaii.

July 20~~th~~. 1903.

The above Description checks as follows:-  
 Cont. of G. R. Ref. to Waipunaiei Trig. Sta. 119.7 N 483.9 W  
 " " from Base, & Dist. = 120.4 N 482.4 W  
 Error in Closing = 0.7 1.5

E. W. Baldwin  
Assist. in Charge of Work.



Scale 200' = 1 inch