

Lot 4 - Part A.
Waipunaie Homesteads
North Hilo, Hawaii.

Copy furnished Land Office
July 8th 1905.

Grant 4899
to
Antone Ribeiro.

File in Carton 131.

Readjusted :-

WAIPUNALEI HOMESTEAD LOTS.

North Hilo, Hawaii.

Lot No. 4 - Part A

Description and Plan :-

Beginning at the South corner of this Lot, at a point on the North edge of the Gov't. Road reserve, the coordinates of which point are 99.3 feet South and 94.2 feet West of Waipunalei Trig. Station as shown on Hawaii Territory Survey Reg. Map No. ~~2193~~, and running by true bearings :-

- 1. N 60° 40' W 447.0 feet along Gov't. Road to a pile of stones at West corner ;
- 2. N 44° 30' E 771.0 feet along part B to a pile of stones at the sea bluff ;
- 3. S 45° 50' E 77.0 feet along the sea bluff ;
- 4. S 88° 30' E ~~307.0~~ ^{302.0} " " " " " ;
- 5. S 4° 45' W 210.0 " " " " " ;
- 6. S 44° 30' W 700.0 " " *lot No. 5,* to the point of beginning.

Containing 7.98 Acres.

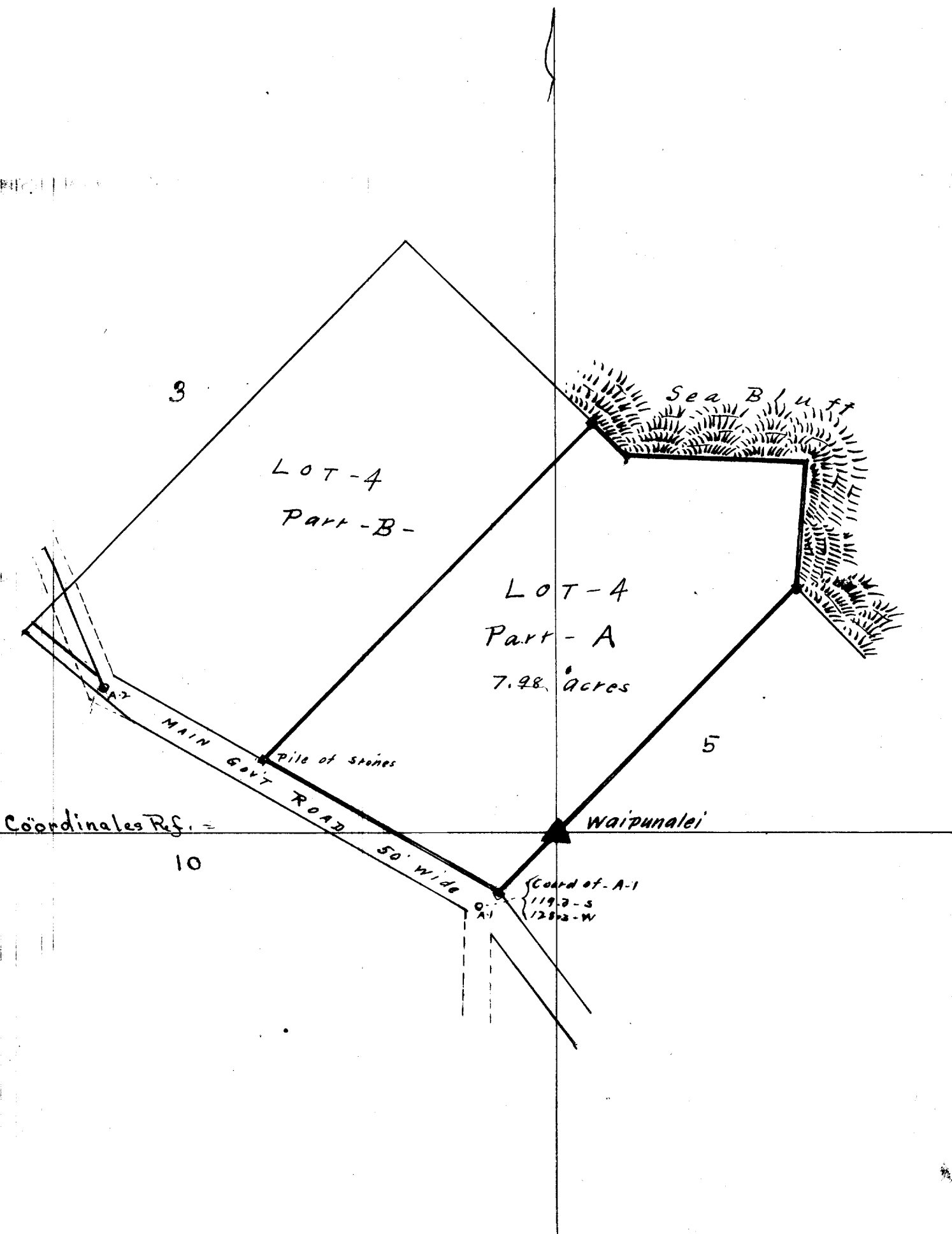
J. H. Maragne
Surveyor.

Hilo, Hawaii.

July 20th. 1903.

*The above Description checks as follows: -
Cont. S. A. Ref. to Waipunalei Trig. Sta. = 99.3 S 94.2 W
" " from ~~Survey~~ - & Dist. = ~~102.0 S~~ ^{102.0 S} 94.2 W
Error in closing. 1.0 S. A.*

*E. W. Baldwin
Assist in Charge of Work.*



Scale 200' = 1-inch