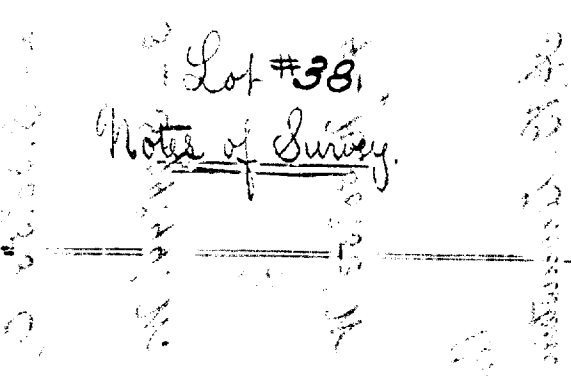


Punakapu Homestead Lots.
Maui Hawaii.

Lot #38,
Note of Survey.



Copy furnished Land Office

Oct. 1914

Portion of Grant 4878
to William Campbell.

[Vertical handwritten notes on the left side of the page, including measurements and possibly names or dates.]

[Vertical handwritten notes on the right side of the page, including measurements and possibly names or dates.]

Puuhihi Homesteads

Waimua South Kohala, Hawaii,

Lot # 38, Notes of Survey.

Beginning at the North angle

of homestead # 36, the boundary runs: -

1 - N. 74° 44' E, "true" - 400 ft, along lot # 37, to the North angle,

2 - S. 30° 53' E, "80" - 1100 " , along lot # 40 to the East angle,

3 - S. 74° 44' W. "400" , along South boundary of the 1000 acre reservation, to the South angle,

400 - N. 30° 53' W. "80" - 1100 " , along lot # 36, to the I.P.

Contains an area of 9.73 acres.

A. B. Lockenstein, Surveyor.

September 1893.

These homesteads were surveyed by A. B. Lockenstein in 1893.