

Copy
Patented Homestead
Lot No. 36

September 1932

A. B. Thompson & Son

Contracting and Sales

Point

4. N. 200 23. A. 1100 12. Stone for 24 to the initial

File in Carton 56

Puukapu Homesteads.

Waimea, South Kohala, Hawaii.

Lot # 36, Notes of Survey:-

Beginning at the North angle of Homestead

34, the boundary runs:-

- 1. N. 74° 44' E. "true" 400 ft. along Lot # 35, to the North angle,**
- 2. S. 30° 53' E. " 1100 ft. along Lot #, 38, to the East angle,**
- 3. S. 74° 44' W. " 400 ft. along South boundary of the 1000**
acre reservation, to the South
angle,
- 4. N. 30° 53' W. " 1100 ft. along Lot # 34 to the Initial**
Point.

Containing an area of 9.73 acres

A.B.Leebenstein Surveyor.

September 1893.

Puuhihi Homesteads

Waimua South Kohala, Hawaii,

Lot # 36; Notes of Survey.

Beginning at the North angle

of homestead # 34, the boundary runs: -

1 - N. 74° 44' E, "true" - 400 ft, along lot # 35, to the North angle,

2 - S. 30° 53' E, " " - 1100 " , along lot # 38 to the East angle,

3 - S. 79° 44' W, " " - 400 " , along South boundary of the 1000 acre reservation, to the South angle,

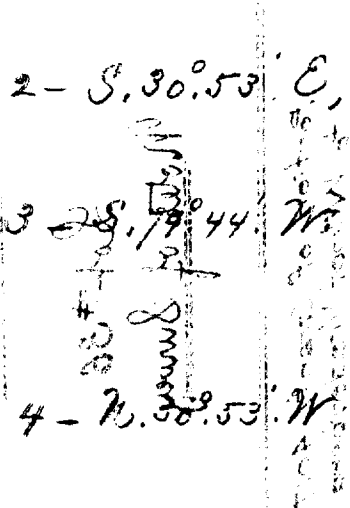
4 - N. 30° 53' W, " " - 1100 " , along lot # 34, to the P.P.

Containing an area of 9.73 acres.

A. B. Lockenstein, Surveyor.

September 1893.

The distance of each side of homestead # 36.



The distance of each side of homestead # 36.