

Lot 2  
Honokaa  
HamaRua Hawaii

---

Gr. 7212 Sam Kahana

# Description of Lot 2. Honokaa Hamakua Hawaii

Beginning at a point which bears N 85° 00' W,  
true 200 ft. from the S.W. corner of Lot 3  
and running as follows by true bearings.

Direct distance from the  
S 75° 30' W 500 ft

1. S. 10° 16' E. <sup>3094</sup>~~3080~~ ft. along Look. reserve to road.
2. S 76° 40' W. 60. " " 50 ft road.
3. S. 02° 00' W. 160 " " do -
4. S 88° 33' W. 290 " " do -
5. S 61° 54' W. 110 " " do -
6. S 87° 50' W. 319 " " do - to Look reserve.
7. S 10° 16' W. <sup>2830</sup>~~2820~~ " " Look reserve.
8. S 85° 00' E. 837. " " To the initial

point, and containing an  
area of  $54 \frac{3}{100}$  acs.

2971.3      2970.6      1624.9      1632.6

check with cov.

Newton (1905) area 55.4 ac.

Direct distance from the S.W. corner of Lot 3

True

500 Ft = 1 inch.

Lot 23

30 FT ROAD

Lot 1.

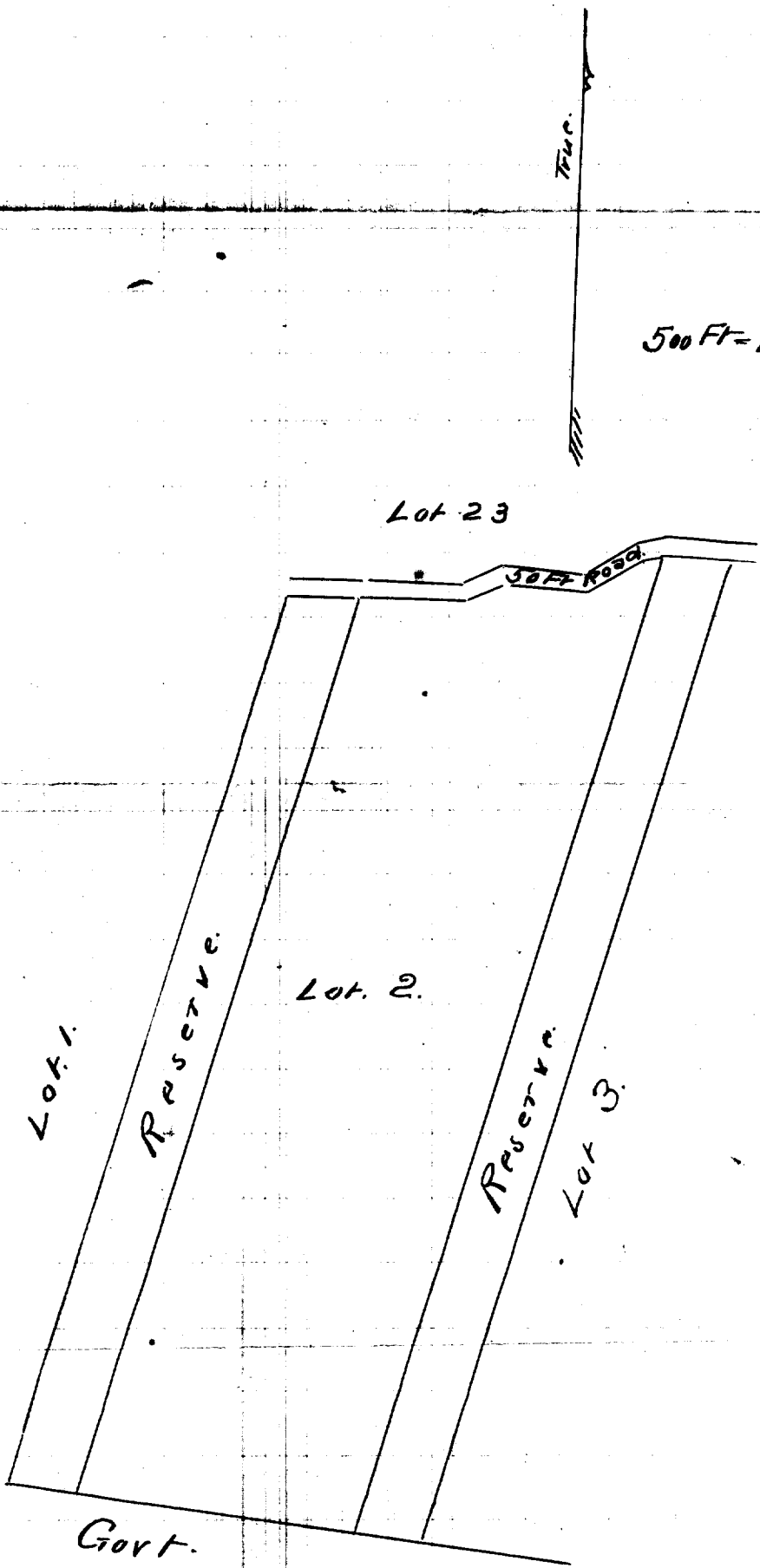
Reserve.

Lot 2.

Reserve.

Lot 3.

Govt.



(Revised)

Lot 2,  
Ahualoa Homesteads,  
Honokaa Section,  
Hamakua, Hawaii.

Furnished Land Office,

February 3, 1919

*file in Carton 73*

# Territory of Hawaii,

Office of the Government Survey.

Honolulu, T. H.,

January 30, 1919

(Revised)

Lot 2,  
Ahualoa Homesteads,  
Honokaa Section, Hamakua, Hawaii.

Beginning at the South corner of this lot and the West corner of Lot 3, Ahualoa Reserve Remnants, the true azimuth and distance from the West corner of Lot 1, Ahualoa Homesteads (Honokaa Section) being  $274^{\circ} 55'$  1947 feet, as shown on Government Survey Registered Map No. 1878, and running by true azimuths:-

1.  $195^{\circ} 16'$  3095 feet along Lot 3, Ahualoa Reserve Remnants;
2. Thence along South side of Homestead Road following in all its sinuosities, the direct azimuth and distance being:  $78^{\circ} 30'$  922 feet;
3.  $15^{\circ} 16'$  2830 feet along Lot 1, Ahualoa Reserve Remnants;
4.  $274^{\circ} 55'$  837 feet along government land to the point of beginning.

AREA 55-01/100 ACRES.

Compiled from Survey  
of W. A. Wall and Map  
of H. E. Newton, by

  
Assistant Government Surveyor.

N	S	E.	W	Area	Ref. Pt.
2985.8	2985.4	1648.9	1648.8	55.01	OK