

Lot 2  
Ahualoa Homestead  
Map. 18 -

Grant No. 6741

TO M. F. Mendes Jr.

Date. Dec. 8 1916

Copy furnished Land Office

Dec. 24/03

Copy furnished Land Office  
Dec. 2, 1913.

File in Carton 72

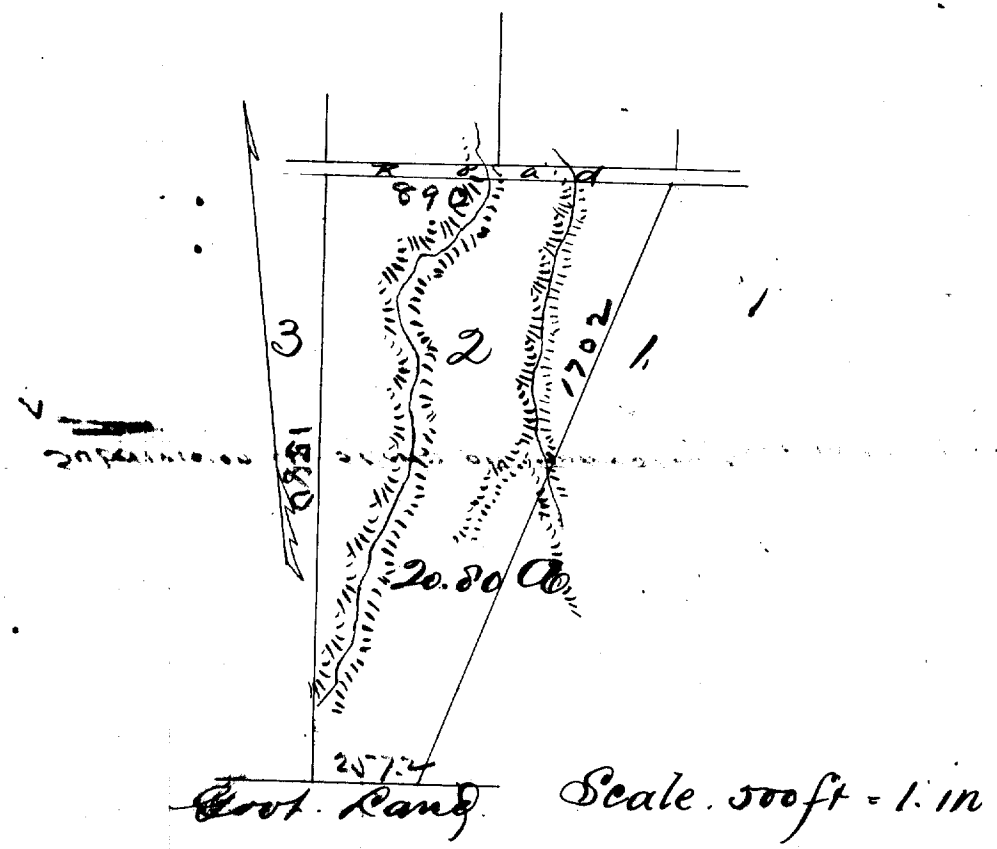
# Description of Lot 2

Abualoa Homestead Map No 18  
Kamahuu, Hawaii

Beginning at a point which is 2421.6 feet S. and 9233.8 feet E from the iron pipe set in the ground at the N.W. corner of ~~Abualoa~~ Homestead, <sup>Subdivision as shown on Homestead file in the Office of the Government Survey</sup> Map No 18 and running as follows:—

- 1- S. ~~87~~<sup>89</sup>° 55' W True. 1580.0 feet along Lot 3.
- 2 S 85° 05' E. " 257.2 " along Lot.
- 3 N 27° 05' E " 1702.0 " " Lot 1.
- 4 N 85° 05' W " 890.0 " " Road to point of beginning and containing an area of  $20\frac{80}{100}$  Acres.

W. Wall  
Oct 15<sup>th</sup> 1891



S + 4.5      2 + 9.1  
area of a = 8/13/18