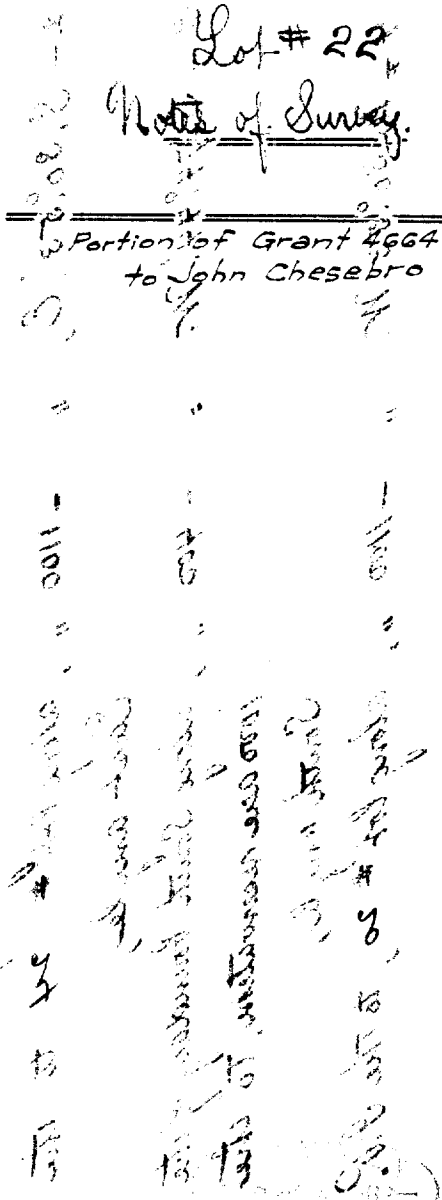


PuuKapuu Homestead Lots.
Waianai Hawaii.

Lot # 22
Note of Survey.

Portion of Grant 4664
 to John Chesebro

14,
 # 15,
 # 16,
 # 17,
 # 18,
 # 19,
 # 20,
 # 21,
 # 22,
 # 23,
 # 24,
 # 25,
 # 26,
 # 27,
 # 28,
 # 29,
 # 30,
 # 31,
 # 32,
 # 33,
 # 34,
 # 35,
 # 36,
 # 37,
 # 38,
 # 39,
 # 40,
 # 41,
 # 42,
 # 43,
 # 44,
 # 45,
 # 46,
 # 47,
 # 48,
 # 49,
 # 50,
 # 51,
 # 52,
 # 53,
 # 54,
 # 55,
 # 56,
 # 57,
 # 58,
 # 59,
 # 60,
 # 61,
 # 62,
 # 63,
 # 64,
 # 65,
 # 66,
 # 67,
 # 68,
 # 69,
 # 70,
 # 71,
 # 72,
 # 73,
 # 74,
 # 75,
 # 76,
 # 77,
 # 78,
 # 79,
 # 80,
 # 81,
 # 82,
 # 83,
 # 84,
 # 85,
 # 86,
 # 87,
 # 88,
 # 89,
 # 90,
 # 91,
 # 92,
 # 93,
 # 94,
 # 95,
 # 96,
 # 97,
 # 98,
 # 99,
 # 100



23
 # 24
 # 25
 # 26
 # 27
 # 28
 # 29
 # 30
 # 31
 # 32
 # 33
 # 34
 # 35
 # 36
 # 37
 # 38
 # 39
 # 40
 # 41
 # 42
 # 43
 # 44
 # 45
 # 46
 # 47
 # 48
 # 49
 # 50
 # 51
 # 52
 # 53
 # 54
 # 55
 # 56
 # 57
 # 58
 # 59
 # 60
 # 61
 # 62
 # 63
 # 64
 # 65
 # 66
 # 67
 # 68
 # 69
 # 70
 # 71
 # 72
 # 73
 # 74
 # 75
 # 76
 # 77
 # 78
 # 79
 # 80
 # 81
 # 82
 # 83
 # 84
 # 85
 # 86
 # 87
 # 88
 # 89
 # 90
 # 91
 # 92
 # 93
 # 94
 # 95
 # 96
 # 97
 # 98
 # 99
 # 100

Waianai Hawaii
 PuuKapuu Homestead Lots

Puuhihi Homesteads

Waimua, South Kohala, Hawaii.

Lot # 22, Notes of Survey.

Beginning at the North angle of Homestead # 20, the boundary runs: -

1- N. 74° 44' E, "true" - 400 ft, along lot # 22, to the North angle,

2- S. 30° 53' E, " " - 1100 " , along lot # 24 to the East angle,

3- N. 74° 44' W. " " - 400 " , along South boundary of the 1000 acre reservation, to the South angle,

4- S. 30° 53' W. " " - 1100 " , along lot # 20, to the P.P.

Containing an area of 9.73 acres.

A. B. Lockenstein, Surveyor.

September 1893.

the boundary of the Homestead # 22.

