

Homesite Lot 22

Map. 6

Atahipua Dec

N. Kona, Hawaii

Grant No. 4853

KAHANANUI

TO

J. ~~Kahanani~~

Date. L.

Copy furnished Land Office

Aug. 5th 1895

and Oct. 8th 1904

File in Carton 18

Description of Homestead lot 22. Map 6.

in Kohanaki, Akahipuu Section, N. Kona: H.

Beginning at rock mkt + by stone wall on makai side of
 Govt road, being S.E. angle of lot 21, thence the boundary
 runs by true bearings:

S 86° 50' W	556	ft along lot 21	
S 3° 19' E	315.2	20
* N 86° 41' E	553.	23
N 10° 15' W	207.	Stone wall makai side of road
N 11° 50' E	110	"

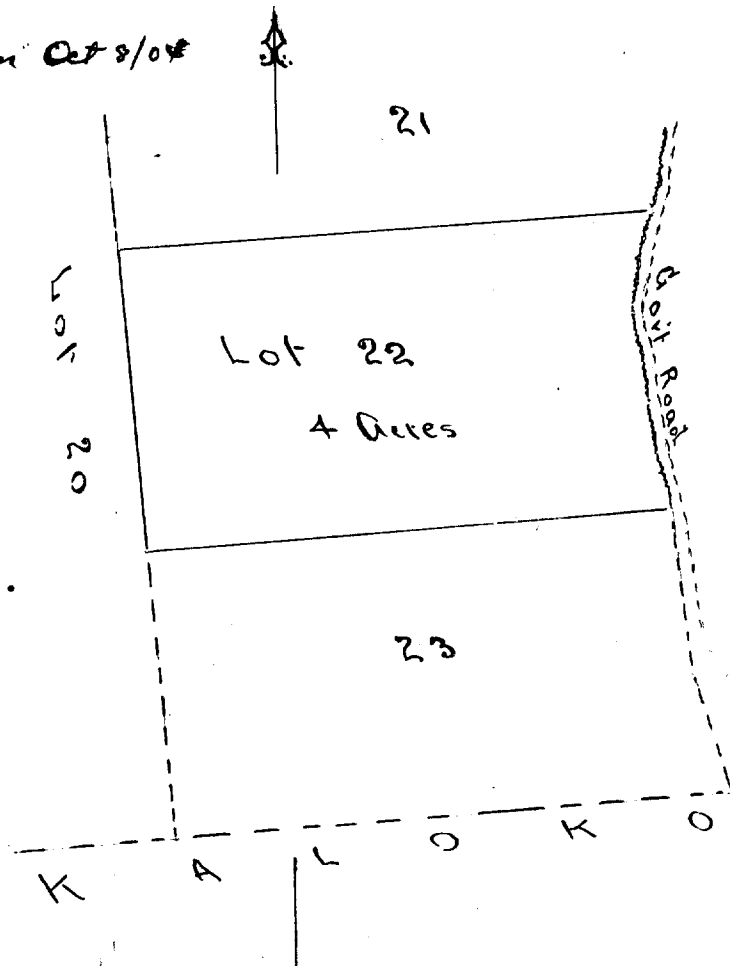
to the initial points
 Area 4. Acres.

Notes by J. S. Brown

from map of J. S. Emerson

Mar 19th 1895

* Changed by J. S. Emerson Oct 8/04



Sc. 200 ft to men

S + 2.0 }
 E + 1.0 }
 1895