

Description of Lot 2

Honolulu Map 16,

*Waipunahei Lots
Hilo, Hawaii*

Grant No.

TO

Date.

Description of Lot 2.

Homestead Map 16.

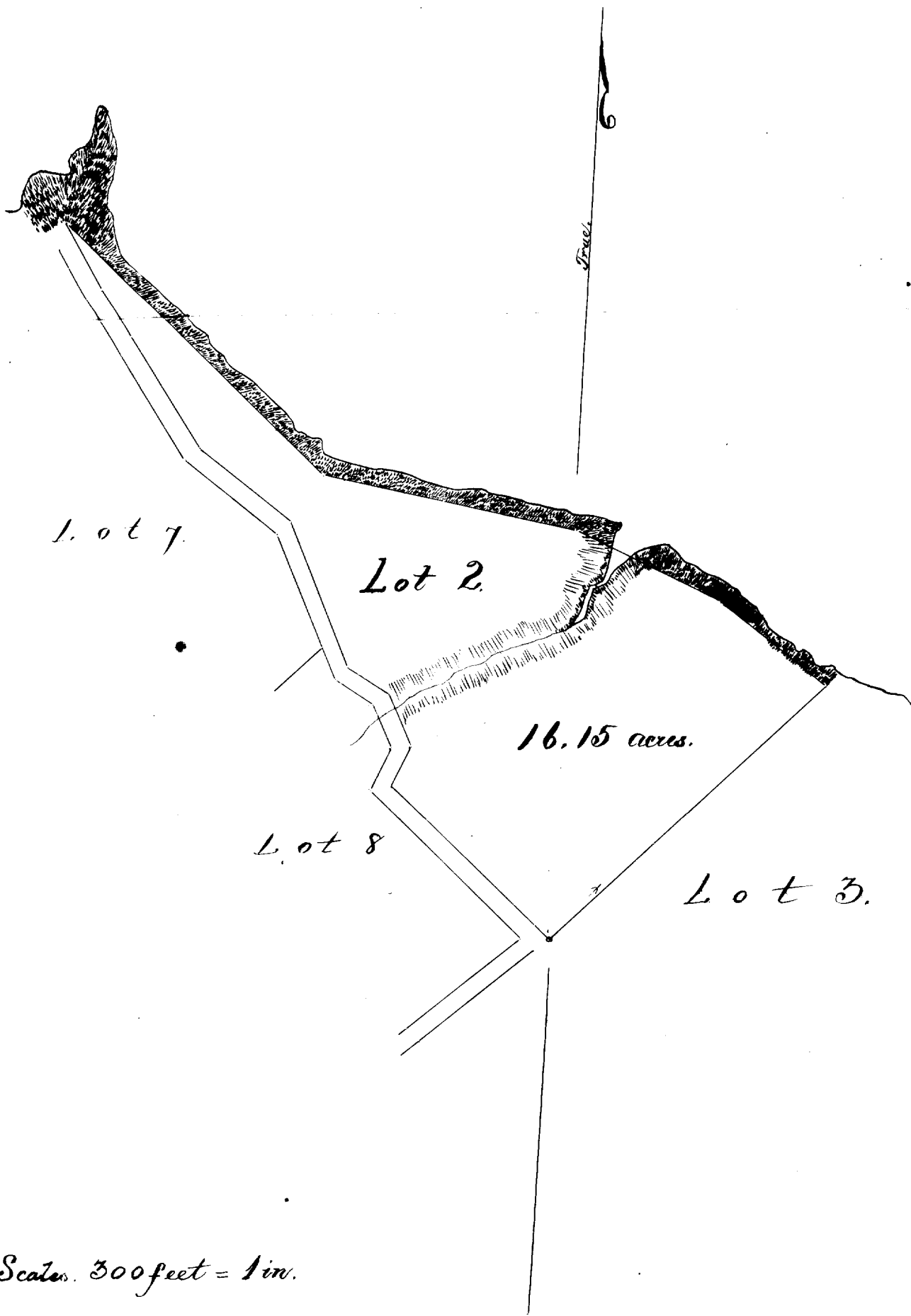
Waipunalii Lots, Niihau, Hawaii

Beginning at a point on road, 937 ft North and 1326 ft West of concrete reference block at South L of Lot 4, and running as follows:

- 1 N 44° 35' E true 880 ft along Lot 3;
- 2 N 54° 25' W true 298 ft along edge of Pali;
- 3 N 66° 15' W true 354 ft along the same;
- 4 N 80° 40' W true 577 ft along the same;
- 5 N 48° 40' W true 795 ft along the same, to head of road leading down
Kauwalii gulch;
- 6 S 31° 30' E true 180 ft along said road;
- 7 S 35° 00' E true 412 ft along the same;
- 8 S 54° 10' E true 260 ft along the same;
- 9 S 24° 10' E true 345 ft along the same;
- 10 S 58° 20' E true 107 ft along the same;
- 11 S 27° 20' E true 125 ft along the same;
- 12 S 26° 20' W true 97 ft along the same;
- 13 S 48° 55' E true 488 ft along the same, to initial point and
containing an area of 16. ⁵/₁₀₀ acres.

June 15 1891

From map by A.B. Lockenstein
S.M. Kanakama



Lot 7.

Lot 2.

16.15 acres.

Lot 8

Lot 3.

Scale. 300 feet = 1 in.

Lot 2.
Maepunalei Homesteads
North Hoilo, Hawaii
Grant 4996
J. K. Makuakane

Copy furnished Land Office
Oct. 12th, 1906.

File in Carton 131.

Readjusted-

WAIPUNALEI HOMESTEAD LOTS.

North Hilo, Hawaii.

Lot No. 2

Description and Plan:-

Beginning at the South corner of this Lot, at a point on the North side of the Homestead road leading mauka and in the center of the old abandoned Gov't. Road. The coordinates of which point are 860.0 feet North and 1472.8 feet West of Waipunalei Trig. Station, as shown on Hawaii Territory Survey Reg. Map No. ~~219.2~~ and running by true bearings :-

1. N 48° 55' W 447.0 feet along Lot No. 8, along the center of the old road ;
2. N 26° 20' E 167.0 feet along the center of the old road to a point on the makai edge of the main Gov't. Road reserve ;
3. N 69° 42' W 157.0 feet along the Gov't. Road reserve ;
4. N 36° 07' W 179.0 " " " " " " ;
5. N 0° 54' W 312.0 " " " " " " ;
6. N 63° 44' W 286.0 " " " " " " ;
7. N 41° 16' W 421.0 " " " " " " ;
8. S 88° 09' W 93.0 " " " " " " to the Northwest corner ;
9. N 17° 10' E 130.0 feet along Lot No. 1, to the North corner ;
10. S 48° 40' E 807.0 " " the top of sea bluff ;
11. S 80° 40' E 577.0 " " " " " " ;
12. S 66° 15' E 354.0 " " " " " " ;
13. S 54° 25' E 298.0 " " " " " " to the East corner ;
14. S 44° 35' W 665.0 " " Lot No. 3 to a point at the mauka edge of the Gov't. Road reserve ;
15. N 37° 55' W 40.5 feet across the Homestead Road ;

16. S 44° 35' W 173.0 feet along Homestead Road :
 17. S 48° 20' W 20.3 " across half the old Road to the point of
 Beginning.

16.10 Acres
~~Less~~ Less area of Main Gov't. Road reserve .63 "
 Containing 15.47 Acres.

J. H. Mesagne
 Surveyor.

Hilo, Hawaii.

July 20th. 1903.

The above Description Checks as follows:
 Coord. S. Pt. Ref. to Waipunaia Trig. Sta. = 8607.0 N 1472.8 W
 " " from Bear. & Dist. " " = 858.1 N 1468.5 W
 Error in Closure 1.9 4.3

E. W. Baldwin
 Assist. in Charge of Work.

N 1552.29 S 1554.85 E 1845.69 W 1849.97 16.22 ac.
 J.R.L. (Oct 10th 03) W.H.

Kaawali Gulch

OF 12
OF
MAIN GOV'T
ROAD 210

50' wide

7

P-0

2000' North
Coast to Waipunaiei

P-8

LOT-2 -
16.10 acres
Less area of road reserve .63 "
15.47 "

Sea Bluff

P-7

50' Road reserve
10.78
1.43

2000' West

8

Coast of A-S
999.9 - N
12096 - W

40' Road

3

Scale 200' = 1 inch