

Lot 19.  
Homestead Map 15  
Hualua, Kohala, H.

Grant No.

TO

Date.

File in Carton 42 ✓

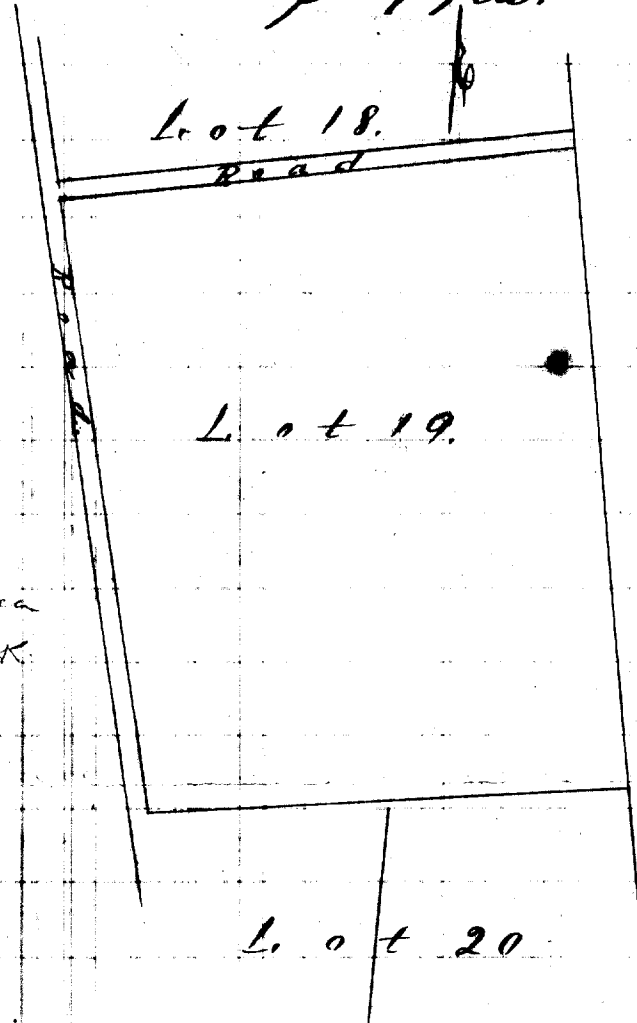
Description of Lot 19.

Hamstead Map 15.

Kualua, N. Kohala, Hawaii

Beginning at a point on east side of reserve for road, this point being N 488 ft. W 625 ft from East Survey Station "Alilile" middle pt between 3 large rocks marked A, thence the boundary runs by true bearings:

- 1 N 13° 5' W 970 ft. along reserve for road.
- 2 N 79° 30' E 805 ft. along cross road.
- 3 S 9° 53' E 100 ft. along Grant 2778 Kaihokuas
- 4 S 82° 30' W ~~780~~<sup>752</sup> ft along Lot 20 to initial point, and containing an area of 17 <sup>75</sup>/<sub>100</sub> acres.



n	s	e	w	area
1091.8	1093.2	964.9	964.2	OK

Newton - Feb. 1 - 1907

Scale 300 ft = 1 in.

Lot 20