

Lot 7
Akahipuu Homesteads
North Kona, Hawaii.

copy furnished Land Office
August 5th 1895.

copy furnished Land Office
February 16, 1911.

file in Carton 18

Lot 7
 Akahipuu Homesteads
 North Kona Hawaii

~~Description of Lot 7 Homestead Map 6
 in Kohalaiki Akahipuu Section N. Kona. H.~~

Beginning at ^{corner} ~~corner~~ of stone walls ^{junction of lots 5, 6, and 7,} ~~east corner of lot~~
 as shown on ~~Abstract Map No. 6,~~ as file in the Government Survey Office
~~on boundary of lot 5,~~ ^{thence running by tree}

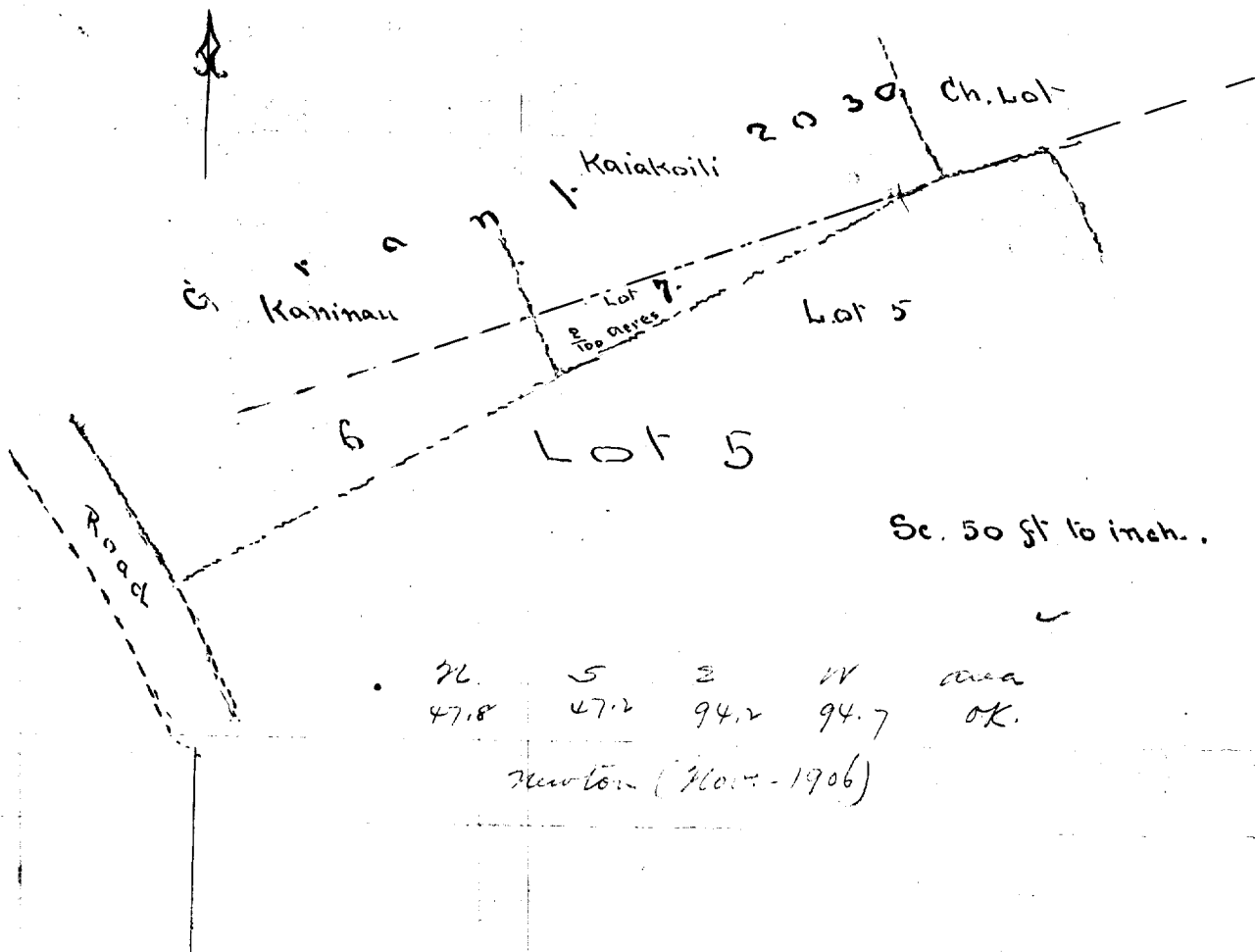
bearings:

1. N 61° 25' E 100 ft along lot 5
2. S 71° 19' W 100 Grant 2030 to Kaiakoili
3. S 22° 40' E 16.5 ft to initial point

Area $\frac{2}{100}$ Acres.

J. S. Brown

July 18th 1895



76.	5	2	11	area
47.8	47.2	94.2	94.7	OK.

Newton (1904-1906)