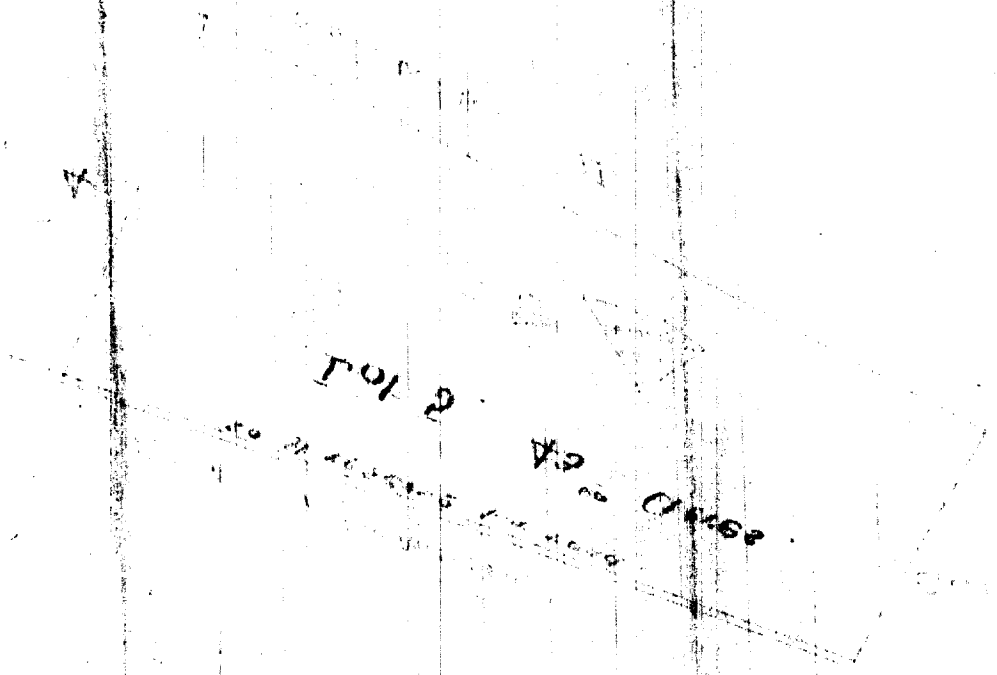


Lot, 4.
Waiaha II
North Kona
Hawaii

This Original description
has amended.



file in Carton 23

Description of Lot,

Wawaha II North Kona Hawaii

Beginning at the N.E. corner of Grant 976 Kapae. From which point Kahului's bears. S. 27° 00' W true 70 feet:
 and running as follows by true bearing.

1.	S. 9° 20' E.	865 ft	along	Gr. 976 Kapae.
2.	N. 61° 28' E.	1420 "	"	Kahului II
3.	N. 23 35 W	1020 "	"	Lot Wawaha II ^{to} roadway
4.	N. 69° 40' W.	1345 "	"	" " "
5.	S. 81 40 W.	900 "	"	" " "
6.	N. 10° 15' E.	310	"	along land divided by East to Makua.
7.	N. 81° 10' E.	45	"	Grant 976 Kapae.
8.	N. 88 30 E.	319	"	" " " " "
9.	N. 85 20 E.	242	"	" " " " "
10.	N. 79 08 E.	516	"	" " " " " to the

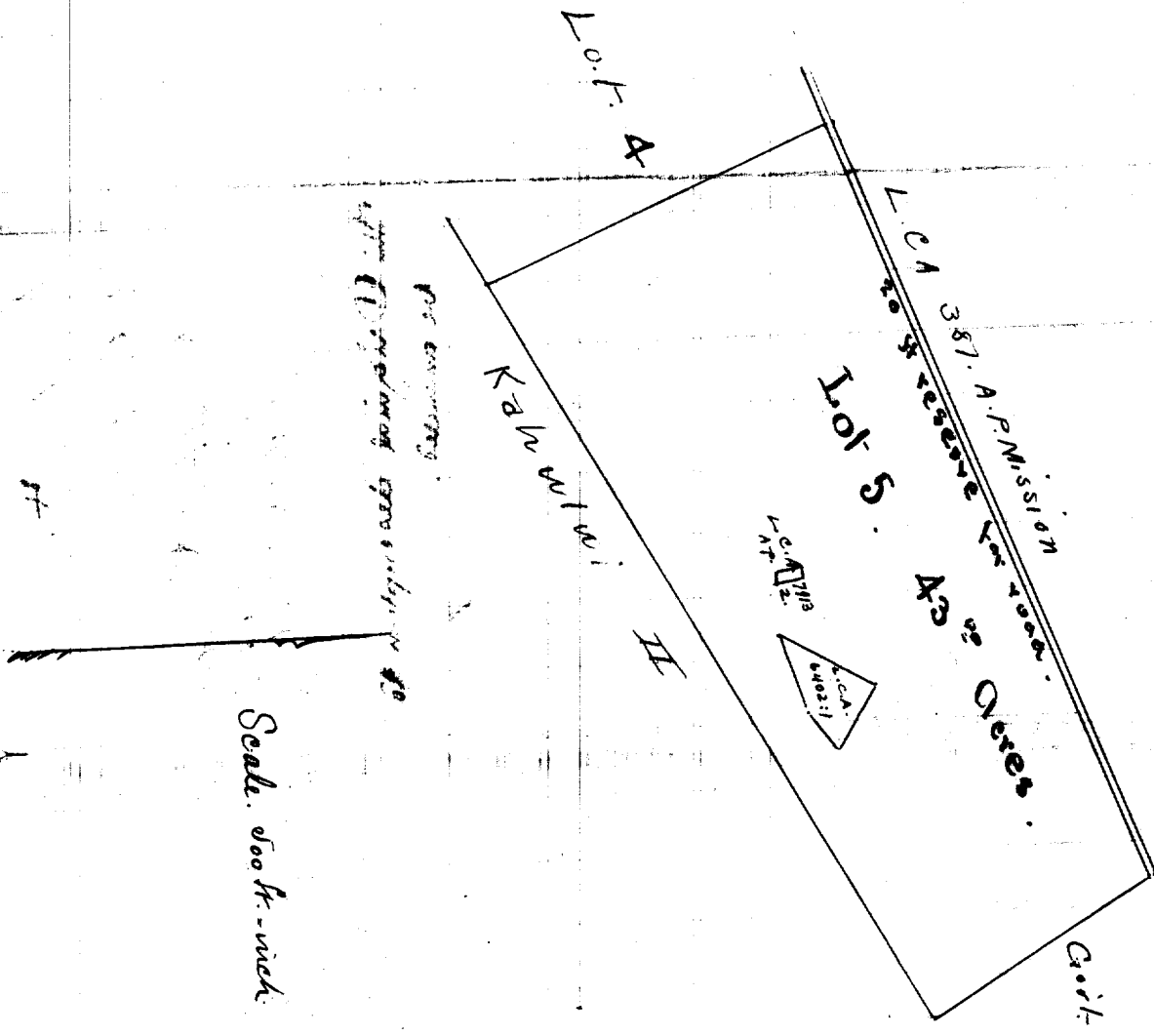
initial point and containing an area of $39\frac{00}{100}$ acres

The rights of ~~the State~~ Kuleana reserved, as shown by plan and also 30 ft road way as shown on plan.

Honolulu. May 13th 96.

Wawaha.

Aug. 23/98



Scale. 500 ft. = 1 inch

Not to scale
The enclosed area is subject to change

100 - 100 ft