

4

Lot 3, <sup>4180</sup>  
Homestead Map, 15,  
Hualala, N, Kohala H.

Copy to Land Office  
Feb 21-95

Eugene Lianida

Copy Furnished for Grant

June 30, 1898

Grant No. 4180.

File in Carton 42

Description of Lot 3.

Homestead Map, 15.

Kualoa, N. Kohala, Hawaii.

Begin at N E L on homestead road, this point being S 1825.9 ft and W 602.4 ft from Govt. Survey Station Kakei, thence by true bearings:

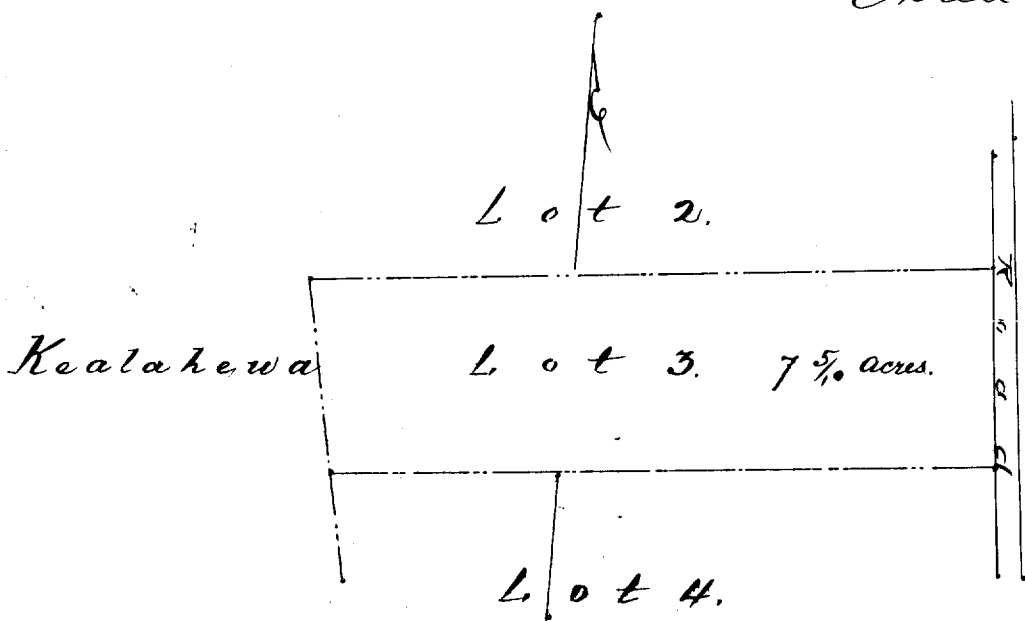
S 5° 31' E 309 ft along homestead road;

S 84° 29' W 1041 ft along Lot 4;

N 11° 42' W 360.6 ft along Kealahewa boundary;

N 84° 29' E 1073.4 ft along Lot 2, to initial point.

Area 7 5/10 acres



Scale 300 ft = 1 in.