

B.H. 528 Robinson Estate

# LANDS OF HOAEAE & APOKAA WAIKELE, EWA, OAHU, T. H.

Scale: 1 in. = 200 ft.

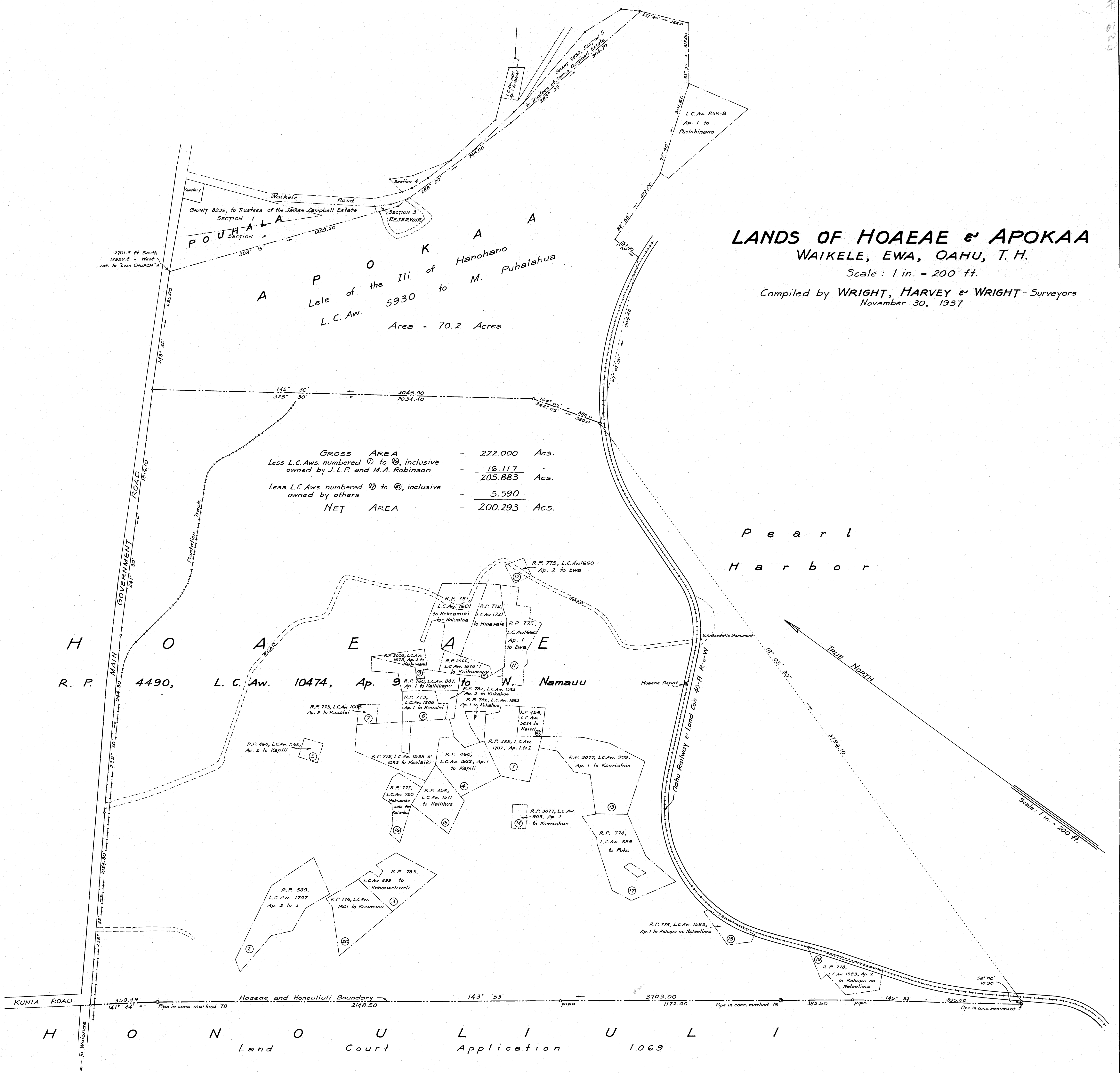
Compiled by WRIGHT, HARVEY & WRIGHT - Surveyors  
November 30, 1937

A P O K A A  
Lele of the Ili of Hanohano  
to M. Puhalahua  
L.C. Aw. 5930  
Area - 70.2 Acres

GROSS AREA	=	222.000	Acres.
Less L.C. Aws. numbered ① to ⑩, inclusive owned by J.L.P. and M.A. Robinson	=	16.117	"
	=	205.883	Acres.
Less L.C. Aws. numbered ⑪ to ⑮, inclusive owned by others	=	5.590	"
NET AREA	=	200.293	Acres.

Pearl  
Harbor

H O A E A  
R. P. 4490, L. C. Aw. 10474, Ap. 9  
to W. Namaau



HOAEAE and HONOLIULI Boundary  
KUNIA ROAD  
Land Court Application 1069