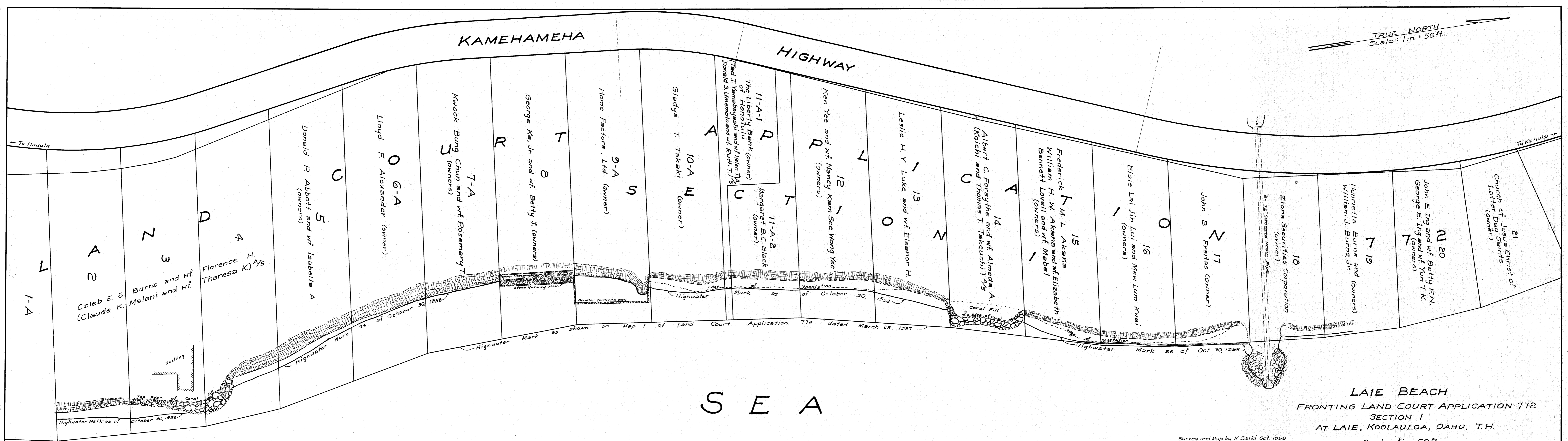


TRUE NORTH
Scale: 1 in. = 50 ft.



LAIE BEACH
FRONTING LAND COURT APPLICATION 772
SECTION 1
AT LAIE, KOOLAULOA, OAHU, T.H.

Scale: 1 in. = 50 ft. FILE IN CS. 13-76

Survey and Map by K. Saiki Oct. 1958
Field Book 1650 Pgs. 28-33

NOTE: Owners as shown are from records of the Taxation Maps Bureau See C.S.F. 6215

Tax Map: 5-5-02

SURVEY DEPARTMENT
TERRITORY OF HAWAII

K.S. Nov. 6, 1958
19' x 42" = 3.8 Sq. Ft.