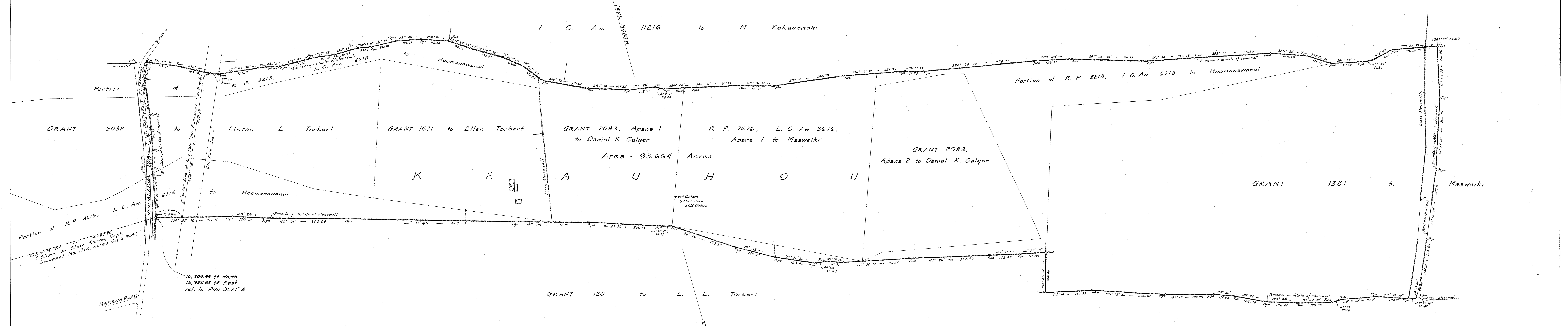


P A L A U E A

L. C. Av. 11216 to M. Kekauonohi



NOTE:
Area of Pole Line Easement (10 ft. wide) = 6037 Sq. Ft.

PLAN SHOWING LAND SITUATED AT KEAUHOU, HONUULA, MAUI, HAWAII FOR

Eva R. Hart, Nelson R. N. Robinson & Thomas R. Foster Robinson

Scale: 1" = 100'

WRIGHT, HARVEY & WRIGHT
Surveyors & Civil Engineers
609 Trustco Bldg. Honolulu, Hawaii
P. B. 1139 March 1, 1962
Tax Map Key: 2nd. Div. 2-1-09-14