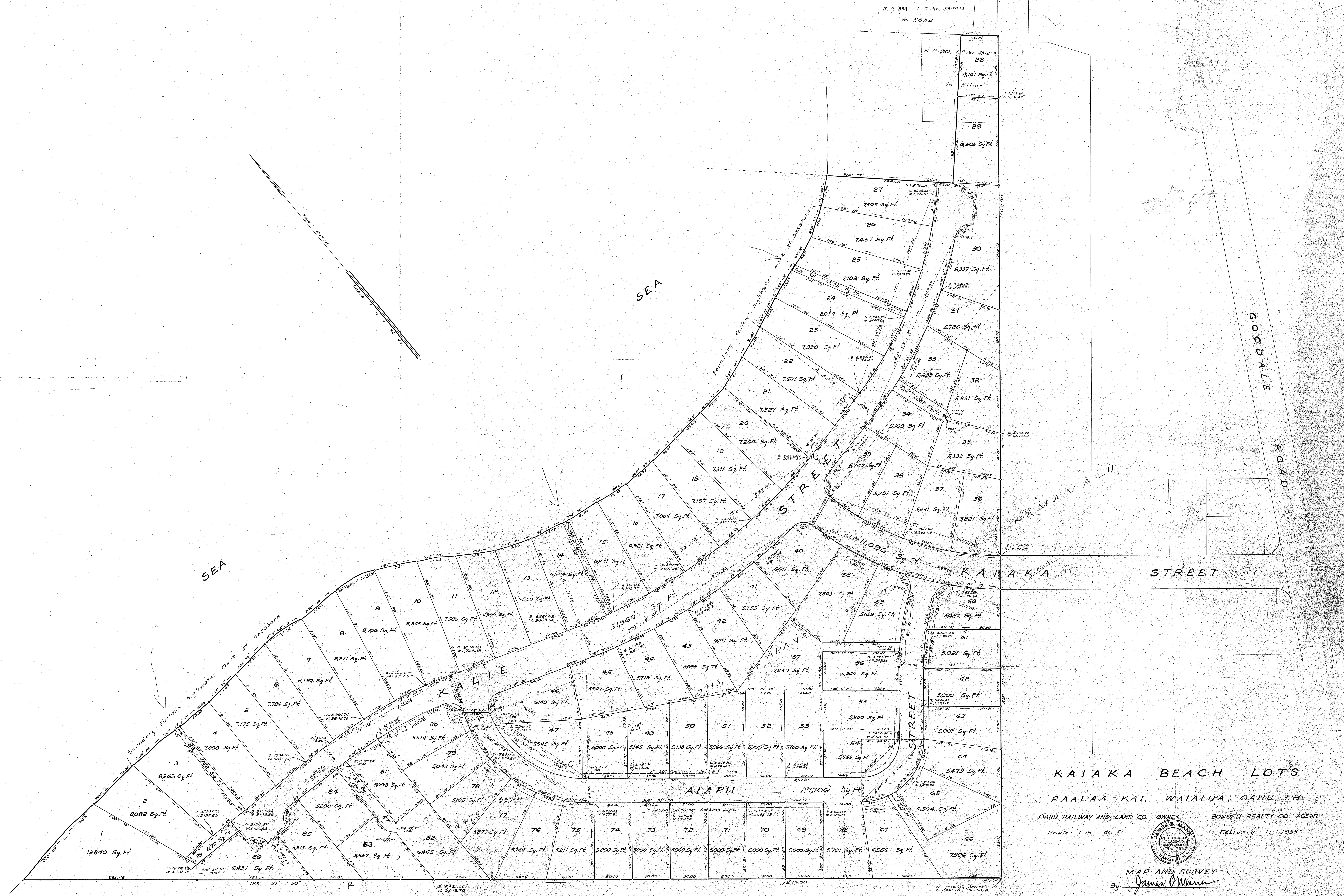


R.P. 283, L.C. No. 8349-2
to Koloa

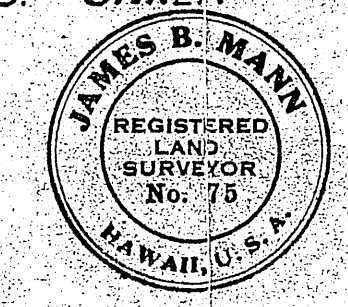
R.P. 283, L.C. No. 4312-2
to Kiliua
4,161 Sq. Ft.
4,505 Sq. Ft.



NOTE: Coordinates shown are referred to Government Survey Triangulation Station "PUENA"

KAIKA BEACH LOTS PAALAA-KAI, WAIALUA, OAHU, T.H.

OAHU RAILWAY AND LAND CO. - OWNER BONDED REALTY CO. - AGENT
Scale: 1 in. = 40 Ft. February 11, 1953



MAP AND SURVEY
By: *James B. Mann*
Registered Professional Surveyor
Certificate No. 71
338 Dillingham Building

m-639 (1953)

File with Waialua Map