

HAWAII TERRITORY SURVEY
 Walter B. Wall, Surveyor.
HONOKAA SECTION
 HAMAKUA, HAWAII.

Scale 1 Inch = 500 Feet

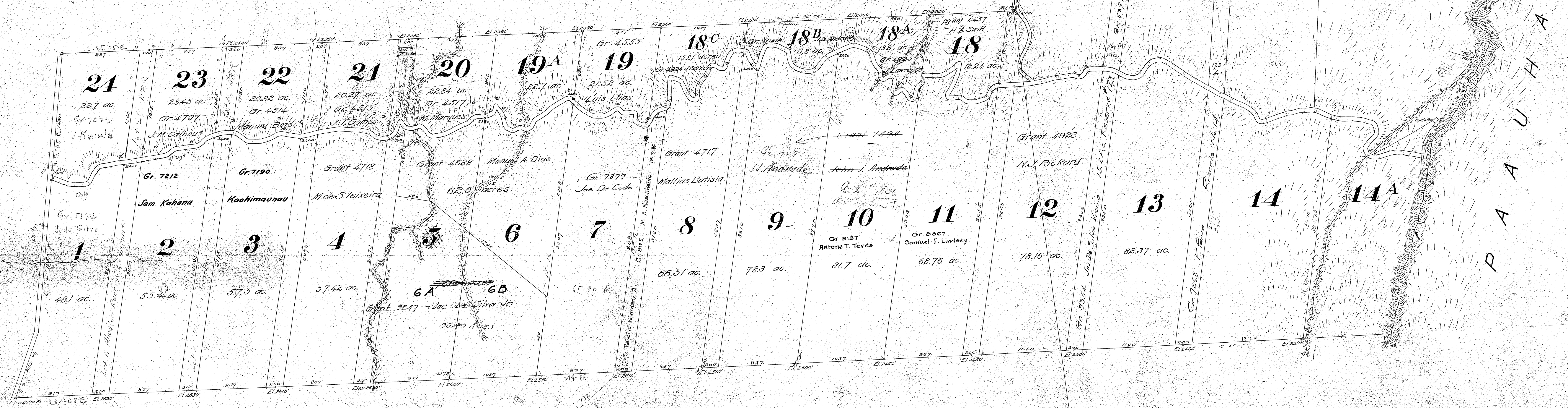
Compiled from maps and descriptions of W.A. Wall.
 Survey made in 1896 for the Commissioners of Public Lands
 H.E. Newton, Dec. 1905.

Note:-

Lot C, included in Lot 15, deeded to Commissioners of Public Lands by Honokaa Sugar Company in exchange for Grant 4098.

AHUALOA HOMESTEADS
 Homestead Map No. 18

KAWELA



Government Lease to Parker