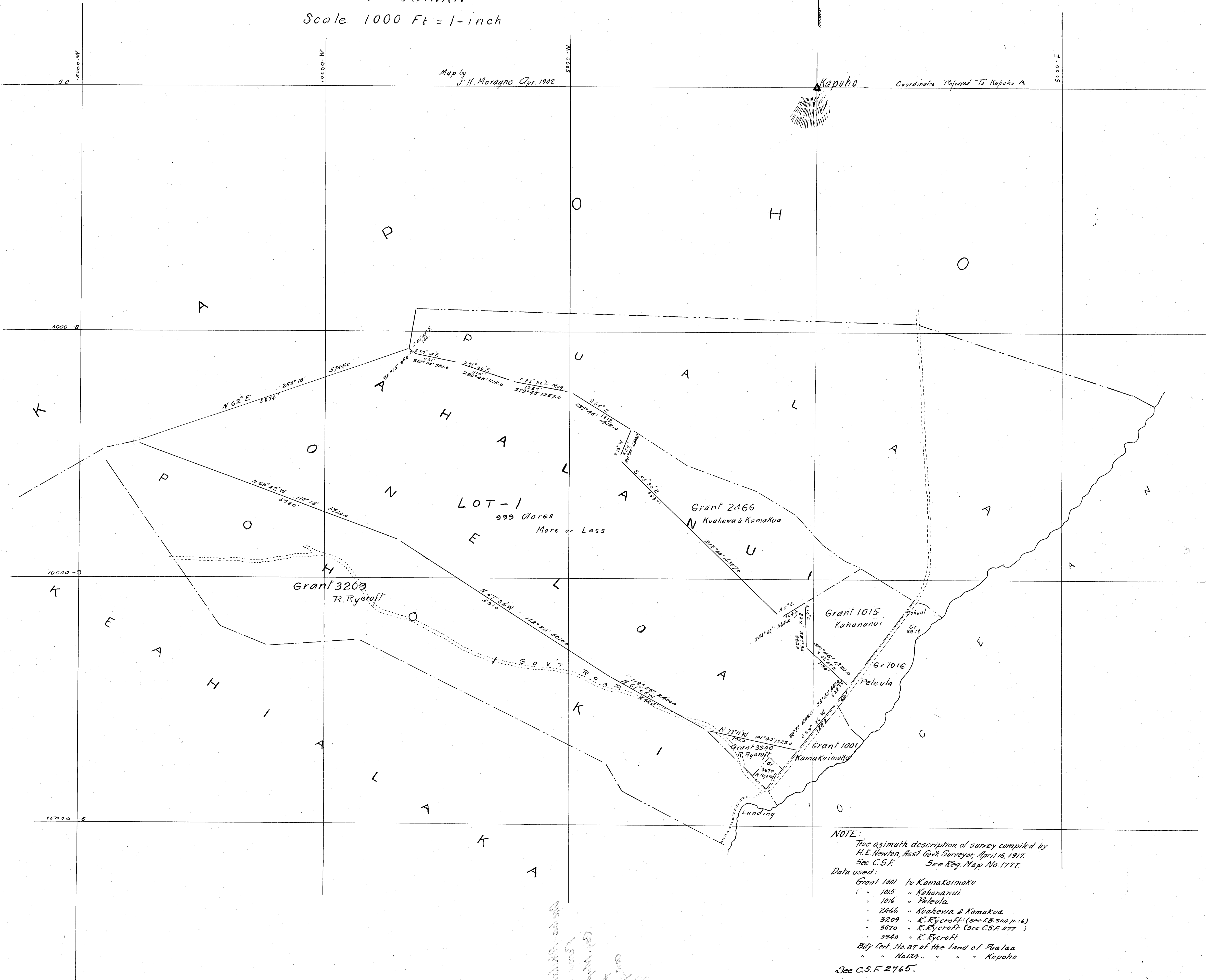


**HAWAII TERRITORY SURVEY**  
 WALTER E. WALL - SURVEYOR  
 HOMESTEAD MAP  
 No 39 OF  
**ONELOA AND AHALANUI SECTION**  
 DISTRICT OF  
**PUNA HAWAII**  
 Scale 1000 Ft = 1-inch

Map by  
*J. H. Moragne Apr. 1902*

Kapoho

Coordinates Referred To Kapoho A



NOTE:  
 True azimuth description of survey compiled by  
 H. E. Newton, Asst Govt Surveyor, April 16, 1917.  
 See C.S.F. See Reg. Map No. 1777.

Data used:

- Grant 1001 to KamaKaimoku
- 1015 " Kahananui
- 1016 " Peleula
- 2466 " Kuahewa & KamaKua
- 3209 " R. Ryecraft (See F.B. 304, p. 16)
- 3670 " E. Ryecraft (See C.S.F. 577)
- 3940 " E. Ryecraft

5th Cert No. 87 of the land of Puna  
 " No. 124 " " " Kapoho  
 See C.S.F. 2765.

Upper-Upper Puna  
 Lower-Upper Puna  
 Lower-Lower Puna  
 Lower-Lower Puna  
 Lower-Lower Puna

888