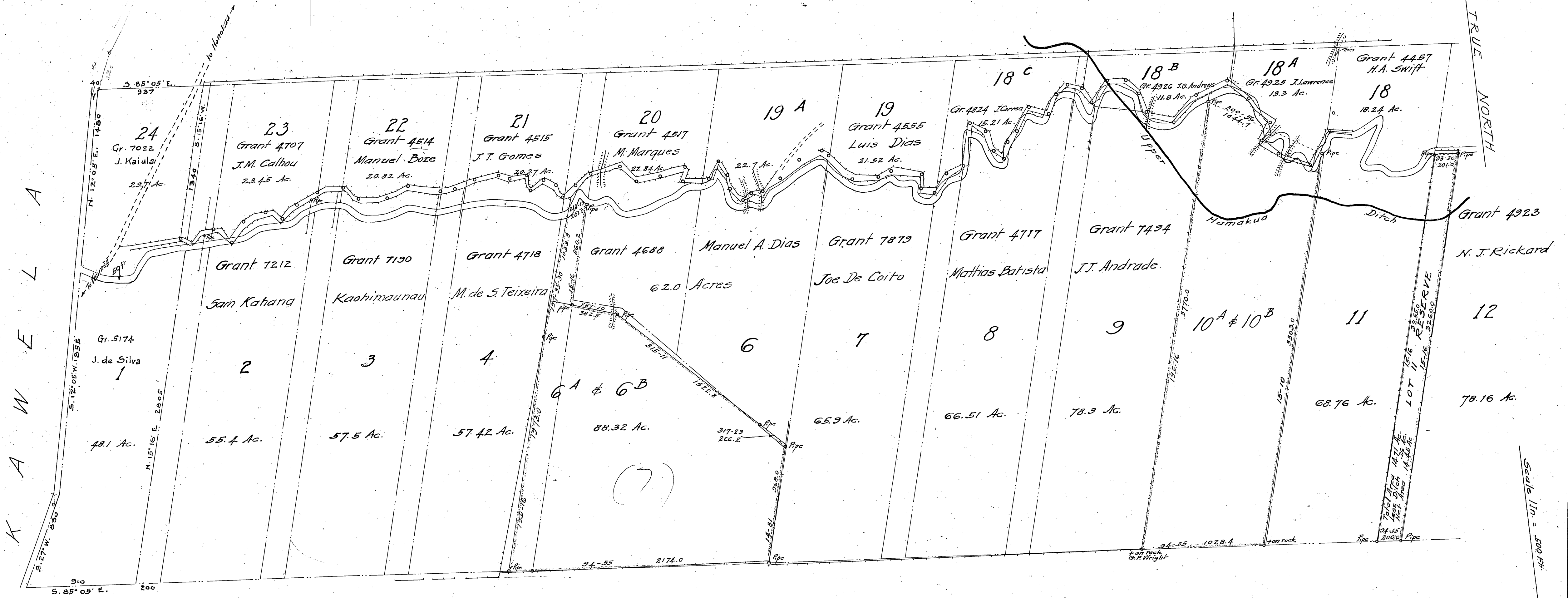


# AHUALOA HOMESTEADS

Homestead Map No. 18



KAWELA

TRUE NORTH

Government Lease to Parker

Nienie

HAWAII TERRITORY SURVEY  
 Walter E. Wall, Surveyor  
 DETAIL SURVEY OF PORTION OF  
 AHUALOA HOMESTEADS  
 HONOKAA, HAMAKUA, HAWAII  
 Scale 1 inch = 500 feet  
 Survey and plan by C.L. Murray, July 1926.

Note: The road marked in red is the correct position of the road in relation to the existing boundary adjoining the lease to Parker. (Road traced from plan of Honokaa Section by H.E. Newton)

Scale 1 in. = 500 ft.