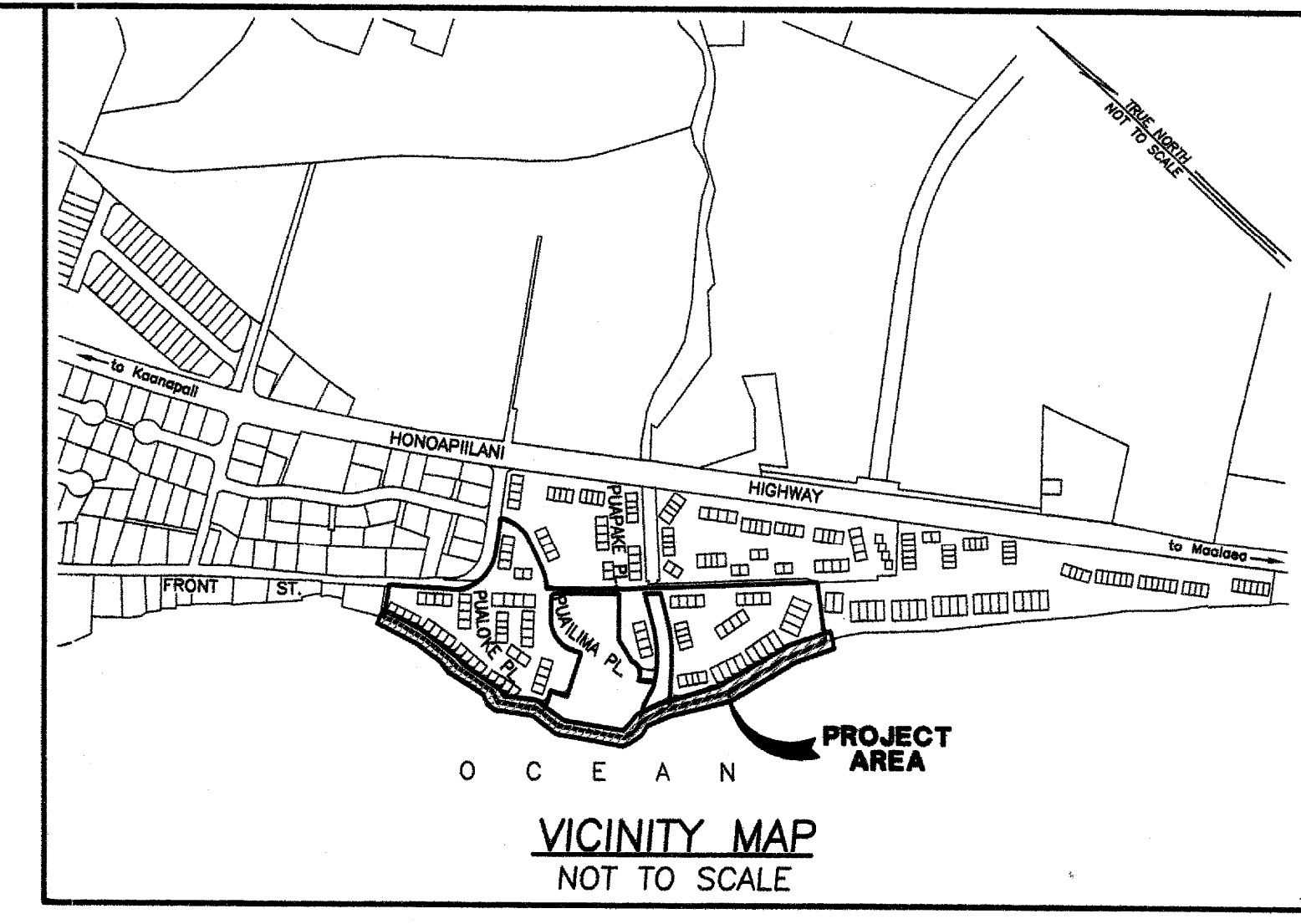
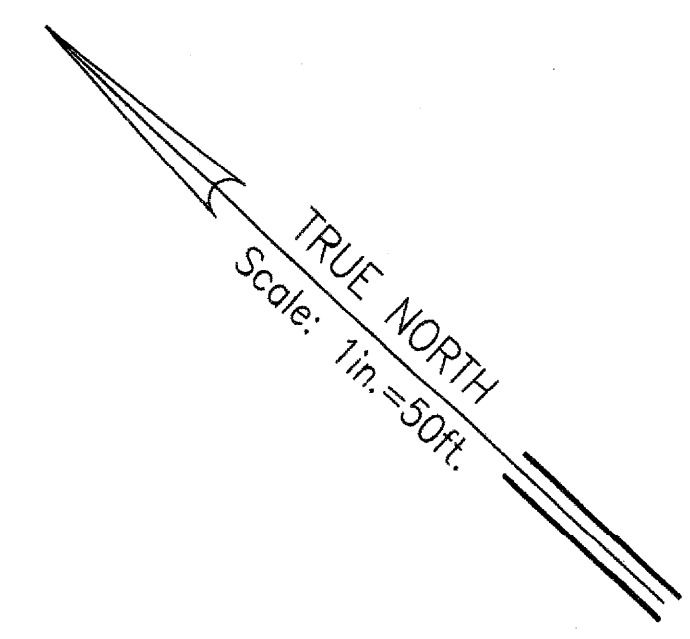


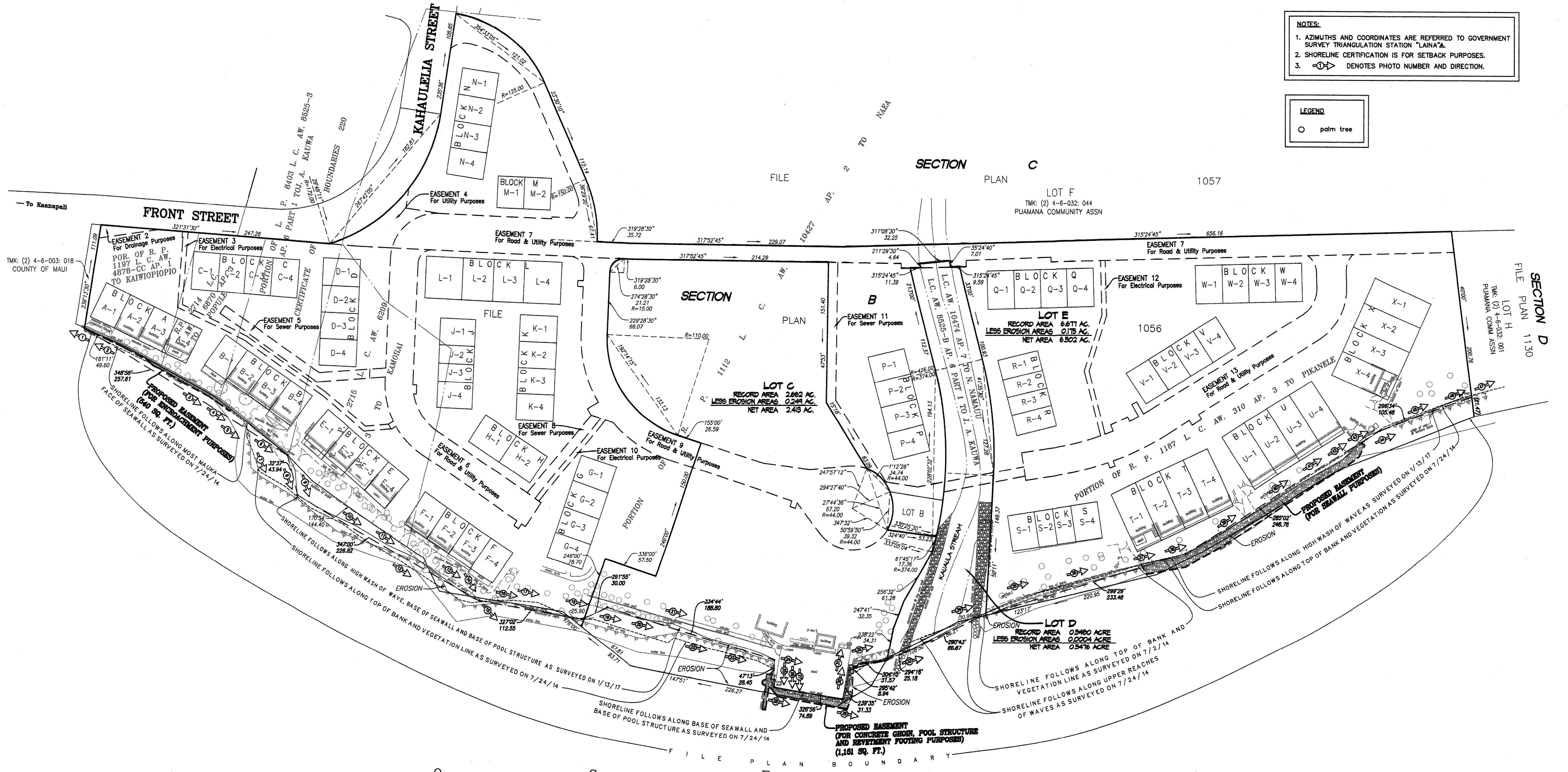
PUAMANA PLANNED UNIT DEVELOPMENT, UNIT 1, FILE PLAN 1056

LOT#	TMK:(S)	ADJOINING OWNERS	LOT#	TMK:(S)	ADJOINING OWNERS	LOT#	TMK:(S)	ADJOINING OWNERS	LOT#	TMK:(S)	ADJOINING OWNERS
A-1	4-6-028: 025	DAVID AND CATHERINE MEDINA TR	F-2	4-6-028: 012	DAVID W MEDINA LIVING TR	M-1	4-6-028: 049	MICHAEL SHATZMAN	S-4	4-6-028: 013	WIZARD HOLDINGS INC
A-2	4-6-028: 024	DAVID AND CATHERINE MEDINA TR	F-3	4-6-028: 011	JOHN H PETERSON JR TR	M-2	4-6-028: 048	JAMES W ROBINSON	T-1	4-6-028: 012	RICHARD WAYNE BRIDGES
A-3	4-6-028: 023	COLLINS TRUST	F-4	4-6-028: 010	HILLMAN RANCHES LP	N-1	4-6-028: 053	MICHAEL R FOSTER	T-2	4-6-028: 011	ZIEBELMAN FAMILY TRUST
A-4	4-6-028: 022	KURT W. & ERIC C. STAUSS	G-1	4-6-028: 006	DAVID WILLIAM MEDINA TR	N-2	4-6-028: 052	HILARY SPREITER	T-3	4-6-028: 010	SHINEON LIMITED PARTNERSHIP
B-1	4-6-028: 021	ALAN SCHULMAN	G-2	4-6-028: 007	WILLIAM O BOLAND REV TR	N-3	4-6-028: 051	FORD K WRIGHT	T-4	4-6-028: 009	HILLMAN FAMILY 1981 TR
B-2	4-6-028: 020	JOHN H PETERSON JR TRUST	G-3	4-6-028: 008	RAHN FAMILY TR	N-4	4-6-028: 050	EDWARD R MARZAL	U-1	4-6-028: 008	TREVOR CHARLES GUERNSEY
B-3	4-6-028: 019	CHRISTINA PETERSON FAMILY TR	G-4	4-6-028: 009	CAROLYN L BAKER	P-1	4-6-028: 005	MARC JOSEPH KORNMESSE	U-2	4-6-028: 007	GLUDRUN R JOHNSON
B-4	4-6-028: 018	CHRISTINA PETERSON FAMILY TR	H-1	4-6-028: 038	PIAZZA FAMILY TR	P-2	4-6-028: 004	MICHAEL & BARBARA GRANT FAMILY TR	U-3	4-6-028: 006	ELIZABETH OLGA PEPEYS
C-1	4-6-028: 026	DAVID M. & SANDY S. VOLK	H-2	4-6-028: 039	MICHAEL & KAREN G LEARNED TR	P-3	4-6-028: 003	VIRGINIA L B GRANT	U-4	4-6-028: 005	CLAIRE NICOLA HOLDINGS LTD
C-2	4-6-028: 027	KURT W. & ERIC C. STAUSS	J-1	4-6-028: 034	HUBBARD PATZER FAMILY TR	P-4	4-6-028: 002	ESTEVAN COLORADO 2 LLLP	V-1	4-6-028: 021	CHRISTOPHER RICHARD ROSE
C-3	4-6-028: 028	CIA FAMILY TRUST	J-2	4-6-028: 035	J THOMAS BURNS UNIFIED CREDIT TR	Q-1	4-6-028: 032	WOJCIK TRUST	V-2	4-6-028: 022	PATRICK CHARLES BOYLE
C-4	4-6-028: 029	RICK & LISA PARLETT	J-3	4-6-028: 036	COLLINS TRUST	Q-2	4-6-028: 031	SRINIVAS AKKARAJU	V-3	4-6-028: 023	PIA DAMON SPEE REVOC TRUST
D-1	4-6-028: 030	DAVID M HOUSTON TR	J-4	4-6-028: 037	ADRIAN UTSCH	Q-3	4-6-028: 030	SUSAN B HALE TRUST	V-4	4-6-028: 024	PETER M WHITBECK
D-2	4-6-028: 031	EQUITY ADVISORS OF KENTUCKY INC	K-1	4-6-028: 043	SHERYL L BAUM REV LVG TR	Q-4	4-6-028: 029	RANDI L GRESHER	W-1	4-6-028: 028	KENNETH E IVES
D-3	4-6-028: 032	WALTZE LIVING TRUST	K-2	4-6-028: 042	MARGARET MARY MARCHELLO TR	R-1	4-6-028: 020	CARL GORDON VERLEY	W-2	4-6-028: 027	PATRICIA MARY RUSH
D-4	4-6-028: 033	WALTER E NORTON REVOC LIVING TR	K-3	4-6-028: 041	SURVIVOR'S WHITEHEAD TRUST	R-2	4-6-028: 019	STEPHEN STROCKBINE	W-3	4-6-028: 026	NINE BAY LIMITED PARTNERSHIP
E-1	4-6-028: 017	DAVE A SIMONSON	K-4	4-6-028: 040	MATTHEW R MOOG	R-3	4-6-028: 018	JERRY DUANE BUTLER	W-4	4-6-028: 025	DAVID A DAHL 1991 FAM TRUST
E-2	4-6-028: 016	DAVID M RUSHER	L-1	4-6-028: 047	MARCUS FAMILY TR 1995	R-4	4-6-028: 017	MICHAEL & KAREN G LEARNED TRUST	X-1	4-6-028: 001	KOLLER FAMILY LP
E-3	4-6-028: 015	BETTY R BEWAK TR	L-2	4-6-028: 046	DAVID JOHN ERNEST SMYTH	S-1	4-6-028: 016	SALVADOR 1992 REVOC TR	X-2	4-6-028: 002	JOHN & CAROLE KING FAMILY TR
E-4	4-6-028: 014	PAUL J BIEKER TRUST	L-3	4-6-028: 045	JAMES E COON TRUST	S-2	4-6-028: 015	RUDDOLPH MORELLI	X-3	4-6-028: 003	19-4 PUJA MEJIA PARTNERS
F-1	4-6-028: 013	PETER MEIER US ENTERPRISES	L-4	4-6-028: 044	FLORES FAMILY TR	S-3	4-6-028: 014	TREVOR CHARLES GUERNSEY	X-4	4-6-028: 004	PUNCHY PARTNERS LLC

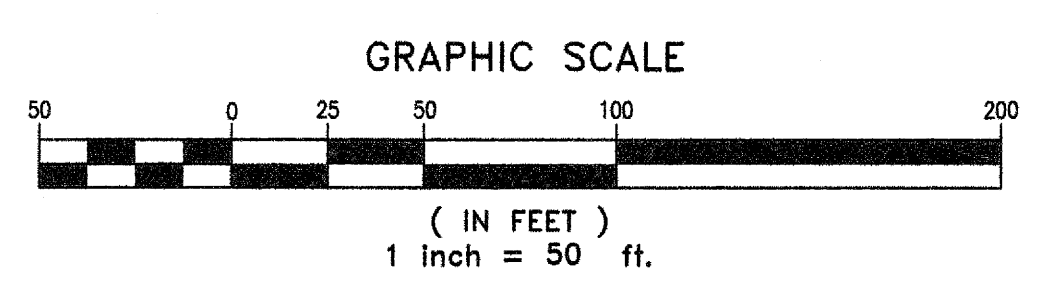


**NOTES:**  
 1. AZIMUTHS AND COORDINATES ARE REFERRED TO GOVERNMENT SURVEY TRIANGULATION STATION "LAINA".  
 2. SHORELINE CERTIFICATION IS FOR SETBACK PURPOSES.  
 3. DENOTES PHOTO NUMBER AND DIRECTION.

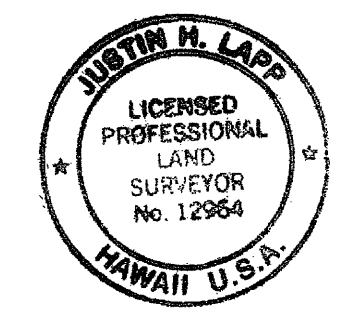
**LEGEND**  
 palm tree



**SHORELINE CERTIFICATION OF  
 LOTS C, D AND E OF SECTION B OF THE  
 PUAMANA PLANNED UNIT DEVELOPMENT, UNIT 1, FILE PLAN 1056**  
 BEING ALL OF ROYAL PATENT 2714, LAND COMMISSION AWARD 6870, APANA 3 TO POPULE  
 AND ROYAL PATENT 2715, LAND COMMISSION AWARD 6209, AANA 2 TO KAMOHAI BEING  
 ALSO PORTIONS OF ROYAL PATENT 1197, LAND COMMISSION AWARD 4878-CC, APANA 1 TO  
 KAIWIOPIOPIO; LAND PATENT 8403, LAND COMMISSION AWARD 8525-B, APANA 6, PART 1 TO  
 J. A. KAUWA, (CERTIFICATE OF BOUNDARIES NO. 220); ROYAL PATENT 1112, LAND  
 COMMISSION AWARD 10,427, APANA 2 TO NAEA; ROYAL PATENT 4490, LAND COMMISSION  
 AWARD 10,474, APANA 7 TO N. NAMAUU (CERTIFICATE OF BOUNDARIES NO. 26) AND ROYAL  
 PATENT 1187, LAND COMMISSION AWARD 310, APANA 3 TO PIKANELE  
 SITUATED AT MAKILA & PAHOA, LAHAINA, MAUI, HAWAII



PREPARED FOR:  
 PUAMANA COMMUNITY ASSOCIATION  
 34 PUALIMA PLACE  
 LAHAINA, HI 96761



THIS WORK WAS PREPARED BY ME  
 OR UNDER MY SUPERVISION.  
 JUSTIN H. LAPP  
 LICENSED PROFESSIONAL LAND SURVEYOR  
 CERTIFICATE No. 12964  
 EXP. DATE 04/2016