

Lot 86.

Hanalei Map 14

N. Kona, Hawaii.

copy furnished Land Office
January 6, 1912

Grant No. 5893

TO Kawaihoolana Kimeona

Date.

Checked ~~and~~ File in Carton 15

Description of Lot 86. } Homestead Map - 14

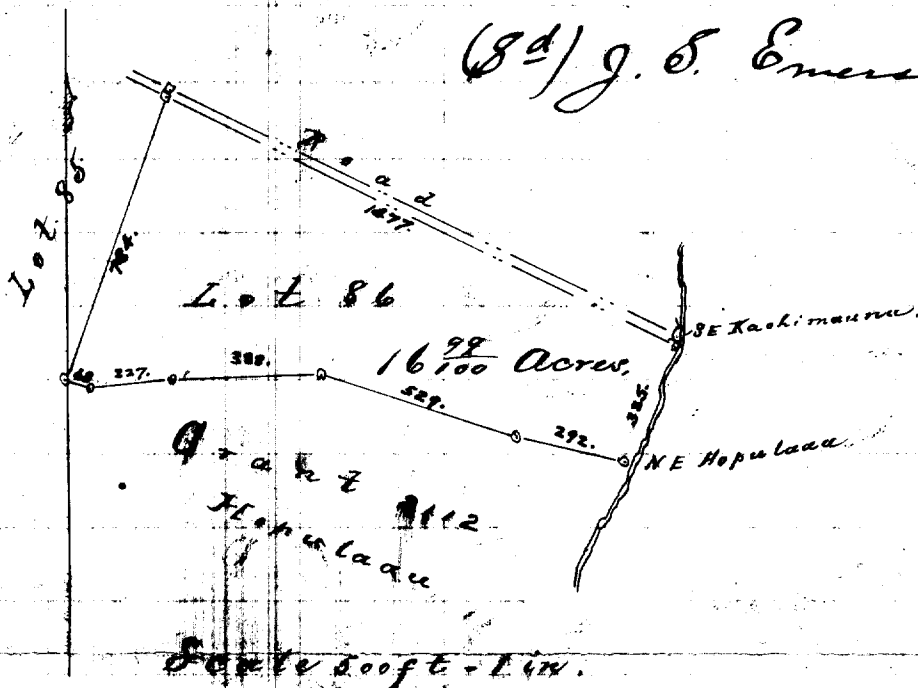
Kaulana Homestead, N. Kona, Hawaii,

Beginning at a stone marked with + and drill hole, ^{at the East corner of this lot, said point being:} S 52° 14' N true 1144 ft. from Akahipuu Trig Station, and running as follows:

- S 23° 40' 99 true 385 ft. along Court Road.
- N 77° 45' 30" W true 292 ft. along Gr 2112, Hopulaae;
- N 72° 43' W true 529 ft. along - do -
- S 88° 3' 30" W true 388 ft. do. do -
- S 84° 50' 30" W true 227 ft. do - do -
- N 72° 20' 30" W true 68 ft. do - do -
- N 19° 50' E true 784 ft. along Lot 85.
- S 62° 10' E true 1477 ft. along the edge of road as laid out. to initial point, and including an area of 16 ⁹⁹/₁₀₀ Acres.

June 1890.

(Sd) J. S. Emerson.



1524

N S E W area
 977.4 989.5 1096.0 1087.3 OK
 newton - Jan 1907