

Lot 82,

Honolulu Map 14

N. Kona Hawaii

Grant No.

TO

Date.

Checked
File in Carton 15

Homestead
Map 14

Description of Lot 82
Kaulana Homestead, N. Kona, Hawaii.

Beginning at a stone marked with + and
drill hole N 59° 50' W true, 890 ft from
the 2nd Sta. Station, Pu Lo, and running
as follows:

N 72° 7' ⁰⁷ ⁵³ W true 673.5 ft, along the edge of road as
laid out,

N 66° 49' ¹¹³ ¹¹ W true 148 ft, along the same.

N 20 20 E true, 1250 ft, along Lot 81

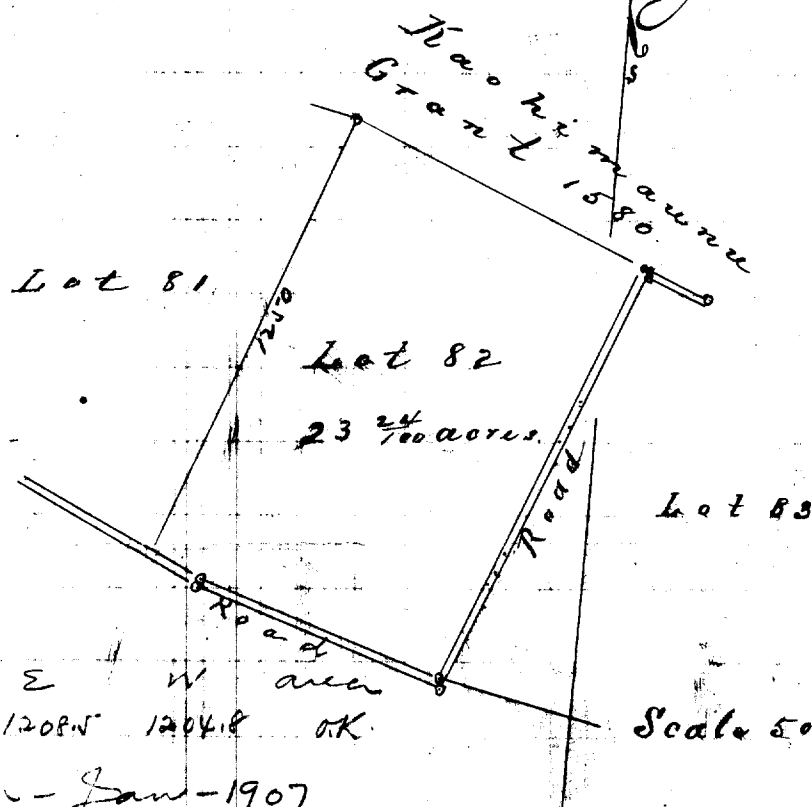
S 73 4 ²⁷⁶ ⁵⁶ E true 93 ft, along Grant 1588 Kaohimau

S 67 59 ²⁹² ⁶¹ E true 739 ft, along the same.

S 20 50 ¹¹³ ¹¹ E ¹¹³ ¹¹ true 1200 ft, along the edge of road
as laid out to initial point
and including an area of 23 ²⁴/₁₀₀
Acres.

June 1890

(Sd) J. S. Emerson.



n	s	e	w	area
1437.2	1428.4	1208.5	1204.8	OK

Newton - Jan - 1907